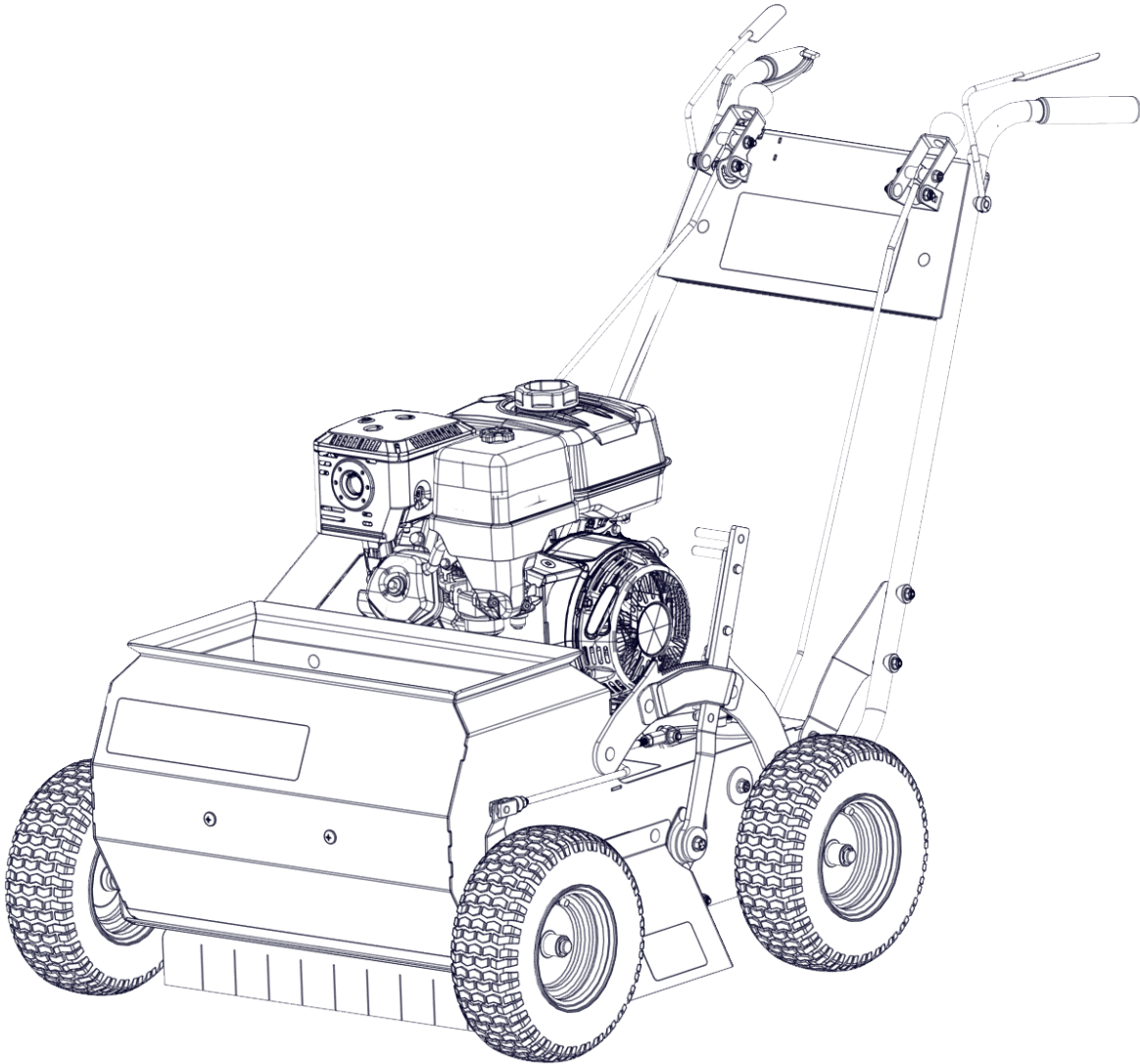


# Stinger Equipment

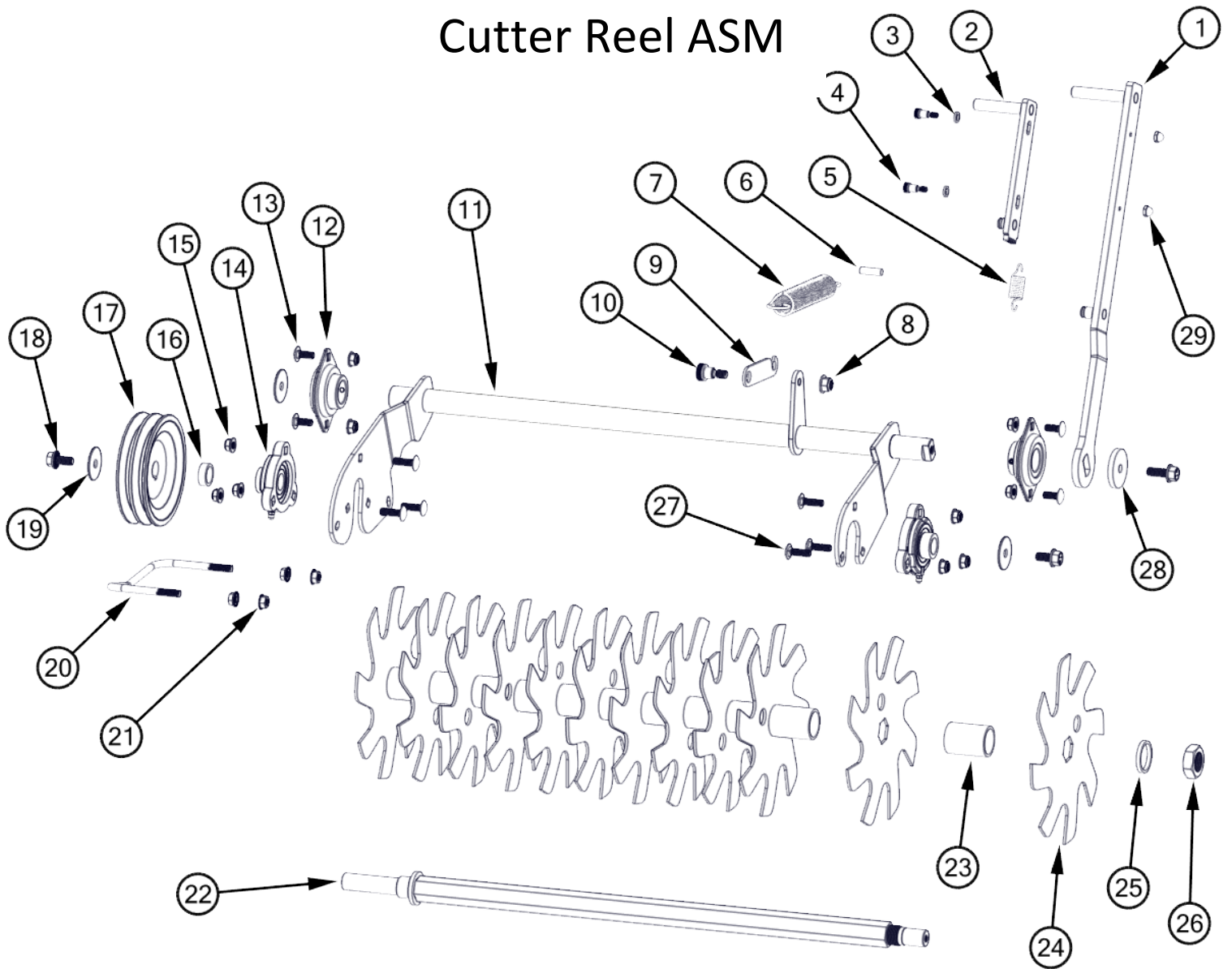
## SS2400 Parts Manual

SN SS2400-1000 through Current



Revised 1/24/2021

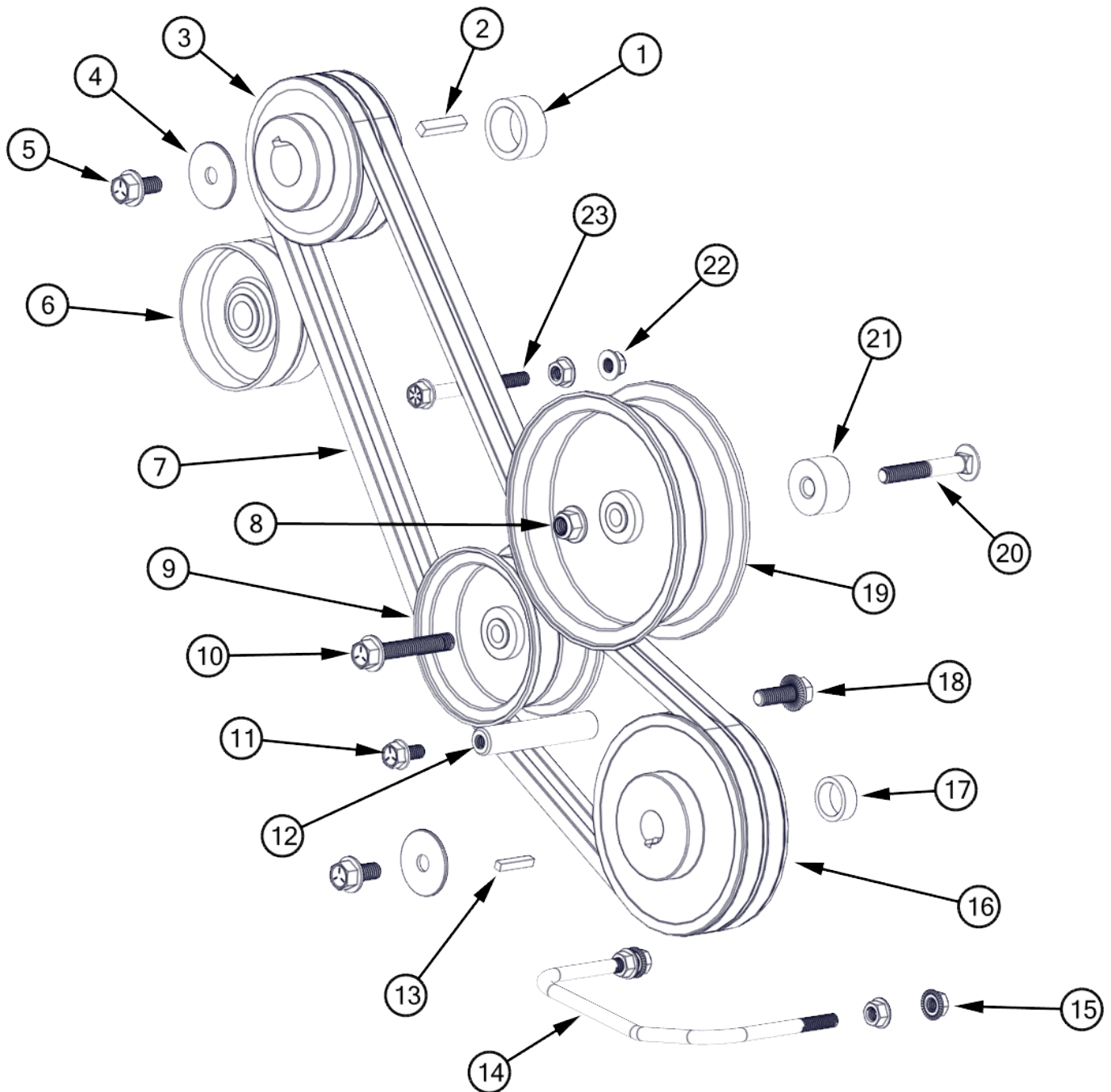
# Cutter Reel ASM



Item	Part Number	Description (config)	Qty
1	20-1349	Depth Arm ASM	1
2	20-1348	Depth Lock ASM	1
3	30-1728	Spacer Nylon Black	2
4	30-1644	5/16" x 3/8" Shoulder Bolt	2
5	10-1384	Depth Arm Spring	1
6	10-1387	5/16 x 1" Dowel Pin	1
7	10-1326	Counter Balance Spring	1
8	30-0105	3/8-16 Nyloc Flange Nut	1
9	10-1317	Spring Bracket	1
10	30-0434	1/2 x 3/8 Shoulder Bolt	1
11	20-0690	Blade Lift ASM	1
12	40-0201	Stamp Flange Bearing 1"	2
13	30-0412	5/16-18 x 0.75 Carriage Bolt	4
14	40-0198	3/4" 3-Bolt Ag Ext Bearing	2
15	30-0051	5/16-18 Flange Nylock Nut	10

Item	Part Number	Description (config)	Qty
16	10-1296	Pulley Spacer	1
17	40-0706	Blade Pulley	1
18	30-1328	3/8-16x0.75 Serrated Bolt	2
19	30-1327	Washer 3/8 ID; 1.5 OD	3
20	10-0158-2	Belt Restraint	1
21	30-0249	5/16-18 Flange Nut Serrated	4
22	20-0192	24" Cutter Shaft ASM	1
23	10-0687	Blade Spacer 2.0	11
24	10-0186	Seeder Blade	12
25	10-0688	Blade Spacer SM	1
26	30-0319	7/8"-14 Jam Nut	1
27	30-0374	5/16-18 x 1.0" Carriage Bolt	6
28	10-0760	Laser Washer 1/4"	1
29	30-1731	1/4-20 Cap Nut	2

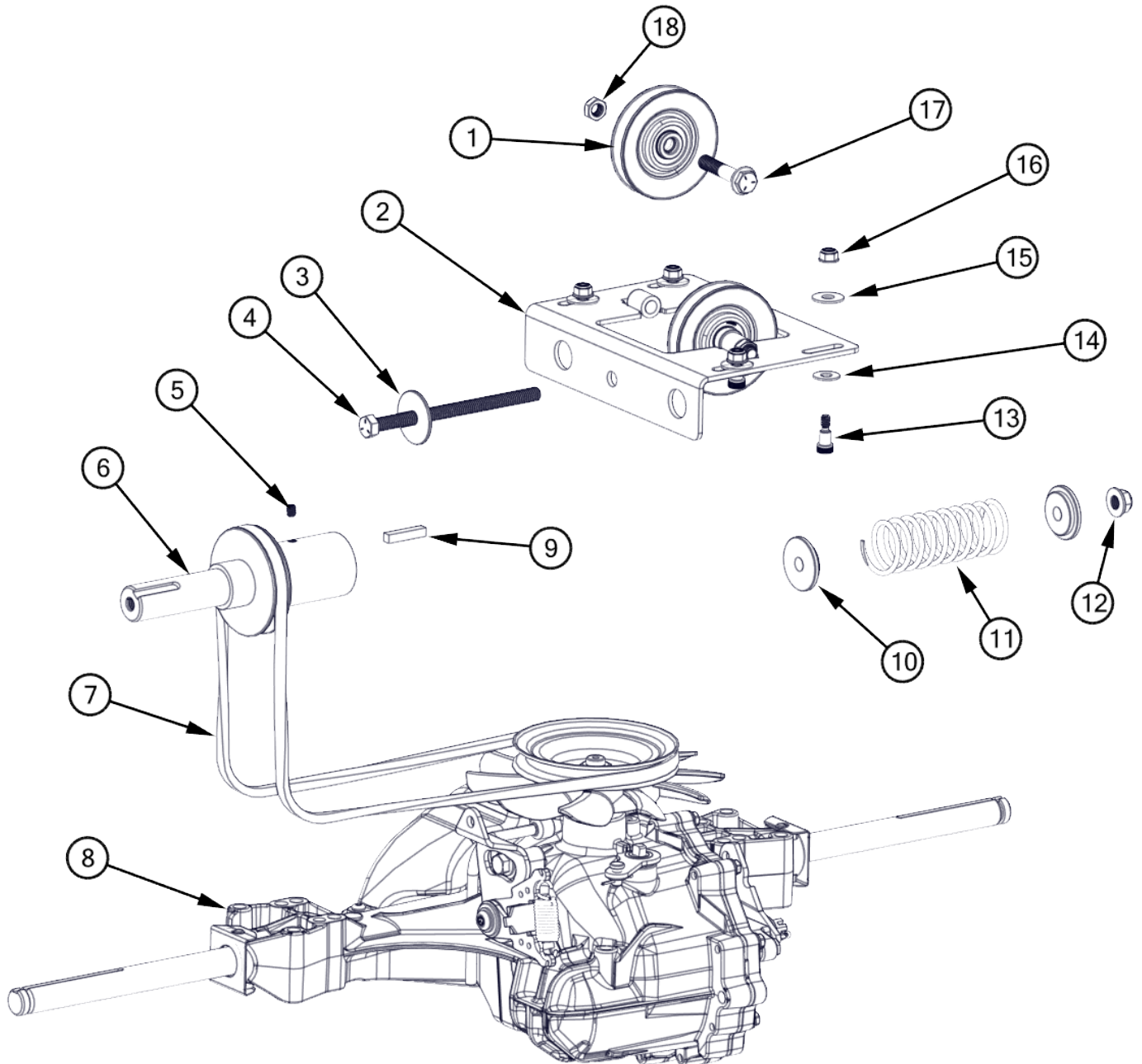
# Cutter Belt Drive



Item	Part Number	Description (config)	Qty
1	10-1451	Engine Pulley Spacer	1
2	30-1650	Key Stock 1/4" x 1.25"	1
3	40-0707	Eng Pulley	1
4	30-1327	Washer 3/8 ID; 1.5 OD	2
5	30-1328	3/8-16 x 0.75 Serrated Hex Bolt	2
6	40-0662	Flat Idler 4"	1
7	40-0663	Blade Belts (2 pcs)	1
8	30-0105	3/8-16 Nyloc Flange Nut	1
9	10-1237	Flat Idler SM	1
10	30-1652	3/8-16 x 2.25 Serrated Hex Bolt	1
11	30-0911	5/16-18 x .625 Hex Flange Bolt	1
12	10-1331	Belt Cover Spacer	1

Item	Part Number	Description (config)	Qty
13	30-1649	Key Stock 3/16" x 1"	1
14	10-0158-2	Belt Restraint	1
15	30-0249	5/16-18 Flange Nut Serrated	5
16	40-0706	Blade Pulley	1
17	10-1296	Pulley Spacer	1
18	30-0382	3/8-16 x 1.00" Serrated Hex Bolt	1
19	40-0661	Flat Idler 5"	1
20	30-0925	3/8-16 x 2.5 SN Carriage Bolt	1
21	10-0771	Idler Spacer	1
22	30-0051	5/16-18 Flange Nylock Nut	1
23	30-1351	5/16-18 x 3.00 Hex Flange Bolt	1

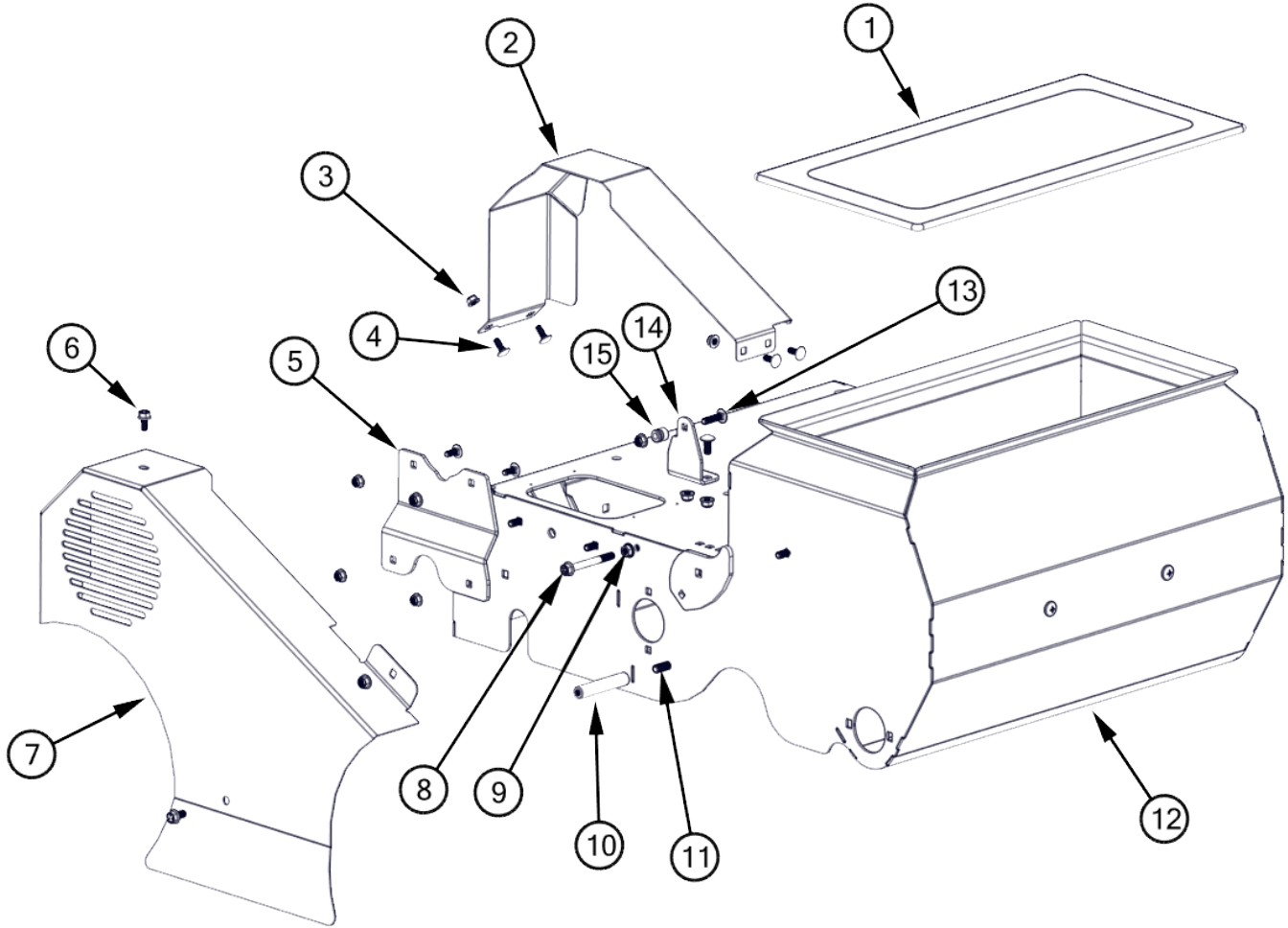
# Transmission Belt Drive



Item	Part Number	Description (config)	Qty
1	40-0693	Trans Idler Pulley	2
2	20-0697	Trans Idler Plate	1
3	30-1327	Washer 3/8 ID; 1.5 OD	1
4	30-1326	3/8-16 x 5.50" Hex Bolt	1
5	30-1651	Set Screw 1/4-20 x 5/16	1
6	40-0714	Seeder Engine Pulley	1
7	40-1324	Hydro Drive Belt	1
8	40-0190	Hydro-Gear T2	1
9	30-1650	Key Stock 1/4" x 1.25"	1
10	10-1325	Spring Spacer	2

Item	Part Number	Description (config)	Qty
11	10-1323	Compression Spring	1
12	30-0105	3/8-16 Nyloc Flange Nut	1
13	30-1644	5/16" x 3/8" Shoulder Bolt	4
14	30-1334	Metal Washer	4
15	30-1658	Nylon Washer	4
16	30-0061	1/4-20 Flange Nylock Nut	4
17	30-0699	3/8-16 x 2.0 Hex Bolt	2
18	30-1478	3/8-16 Jam Nyloc Nut	2

# Belt Cover ASM

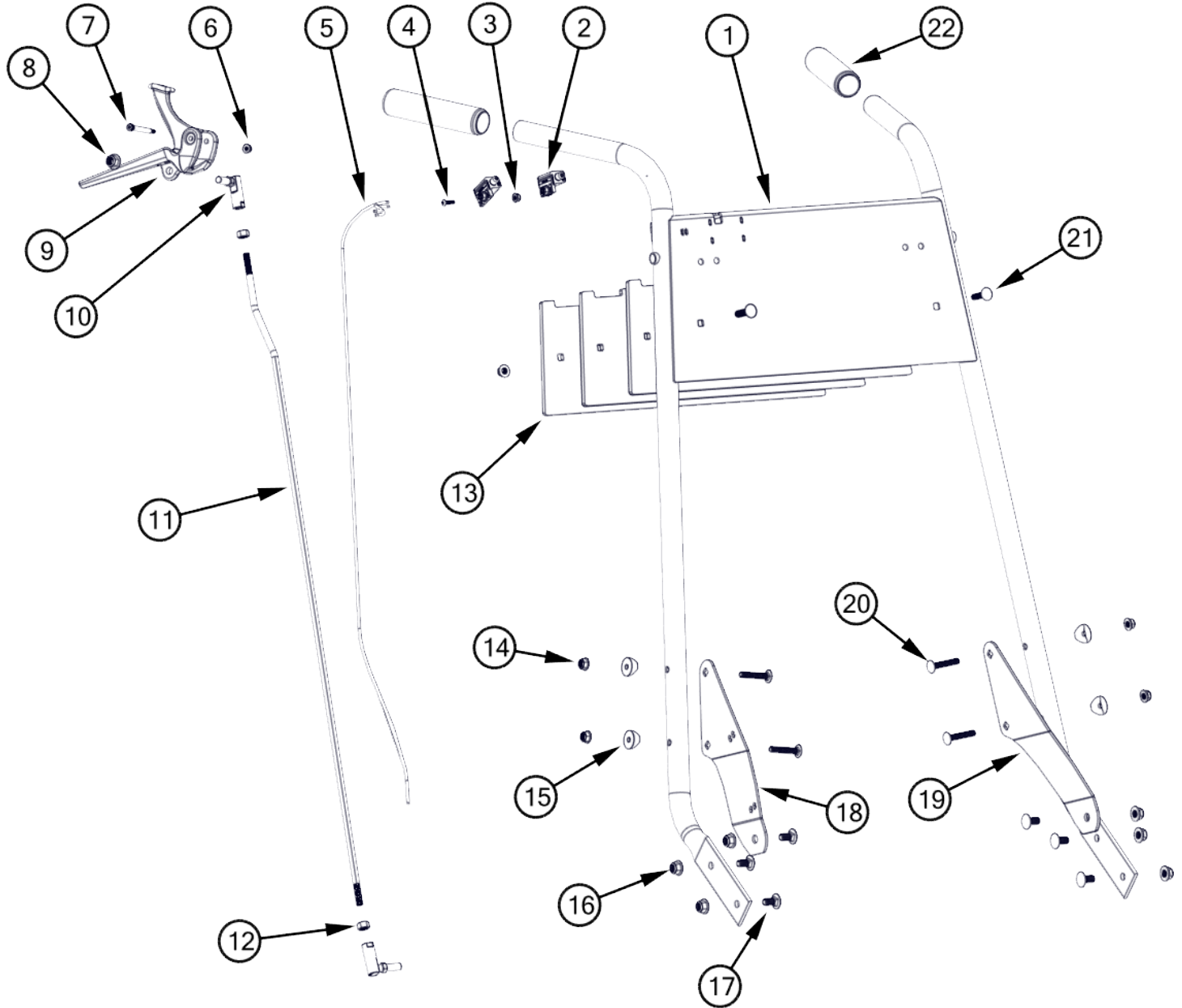


Item	Part Number	Description (config)	Qty
1	10-2686	Hopper Cover	1
2	10-0749-G	Belt Cover SM	1
3	30-0051	5/16-18 Flange Nylock Nut	12
4	30-0412	5/16-18 x 0.75 Carriage Bolt	11
5	10-0715	Bearing Bracket	1
6	30-0911	5/16-18 x 5/8 Hex Bolt	2
7	10-0713-G	Belt Cover	1
8	30-1351	5/16-18 x 3.00 Hex Flange Bolt	1

Item	Part Number	Description (config)	Qty
9	30-0249	5/16-18 Flange Nut Serrated	1
10	10-1331	Belt Cover Spacer	1
11	30-0382	3/8-16 x 1" Serrated Hex Bolt	1
12	20-0652-G	Seeder Frame 24"	1
13	30-0411	5/16-18 x 1.25 Carriage Bolt	1
14	10-0764	Spring Bracket	1
15	10-0765	Spring Stud	1



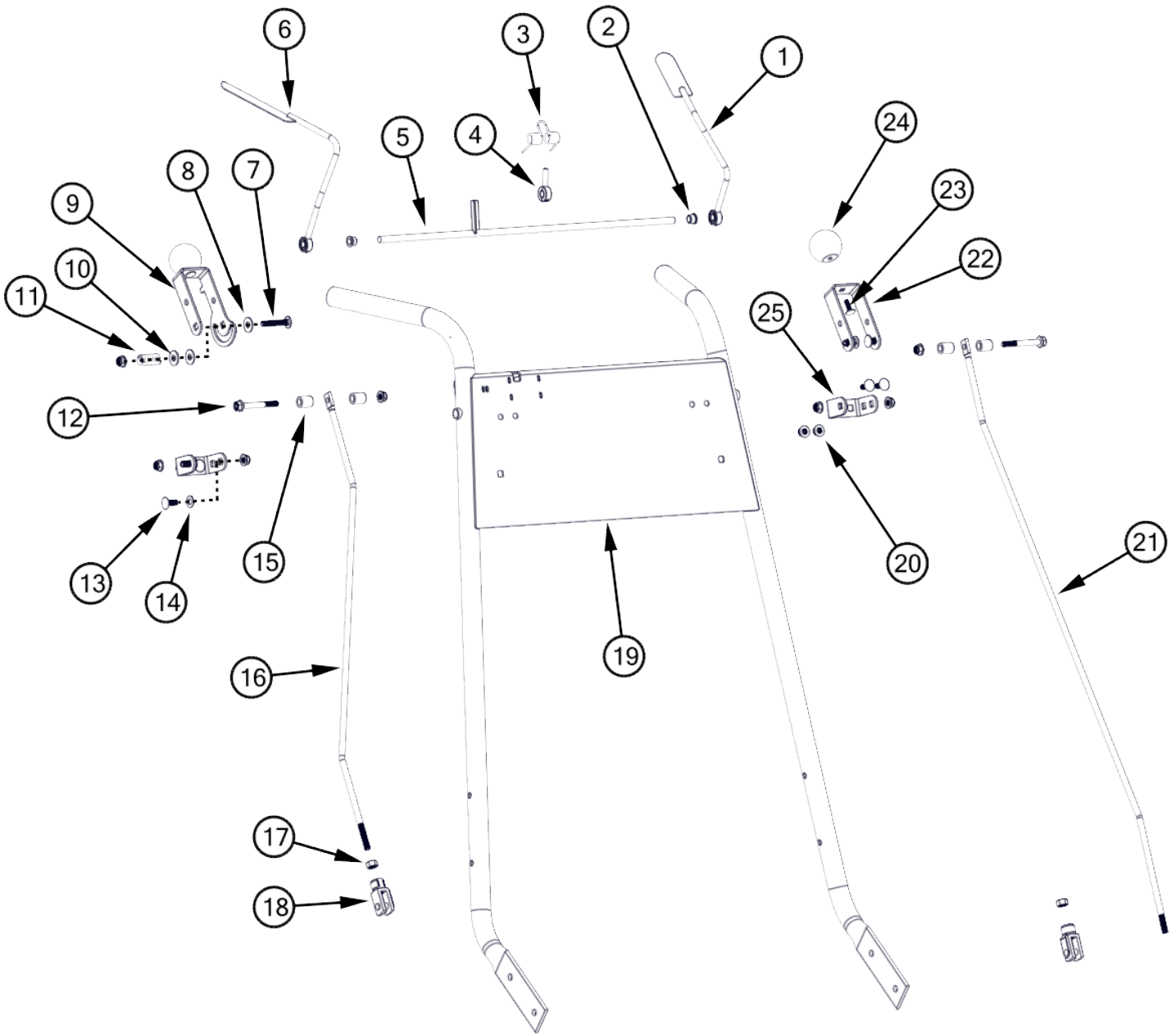
# Handle 1



Item	Part Number	Description (config)	Qty
1	20-0659	Handle ASM	1
2	50-1359	Plunger Switch	2
3	30-0103	#10-24 Flange Nyloc Nut	4
4	30-0924	10-24 x 5/8" Socket head bolt	4
5	50-0045	Harens wire routing	1
6	30-0103	#10-24 Flange Nyloc Nut	1
7	30-0111	1/4" x 1.75 Shoulder Bolt	1
8	30-0105	3/8-16 Nyloc Flange Nut	1
9	10-0722	Traction Handle	1
10	40-0183	3/8-24 Rod End	2
11	40-0729	Control Rod	1
12	30-0487	3/8-24 Hex Nut	2

Item	Part Number	Description (config)	Qty
13	10-1278	Seeder Handle Weight	3
14	30-0051	5/16-18 Flange Nylock Nut	6
15	30-0052	Curve Washer	4
16	30-0105	3/8-16 Nyloc Flange Nut	6
17	30-1301	3/8-16 x 0.75" Carriage Bolt	6
18	10-1256	Handle Brace Right	1
19	10-1255	Handle Brace Left	1
20	30-0067	5/16-18x1.75" Carriage Bolt	4
21	30-0411	5/16-18 x 1.25 Carriage Bolt	2
22	10-0085	Hand Grip 1.125	2

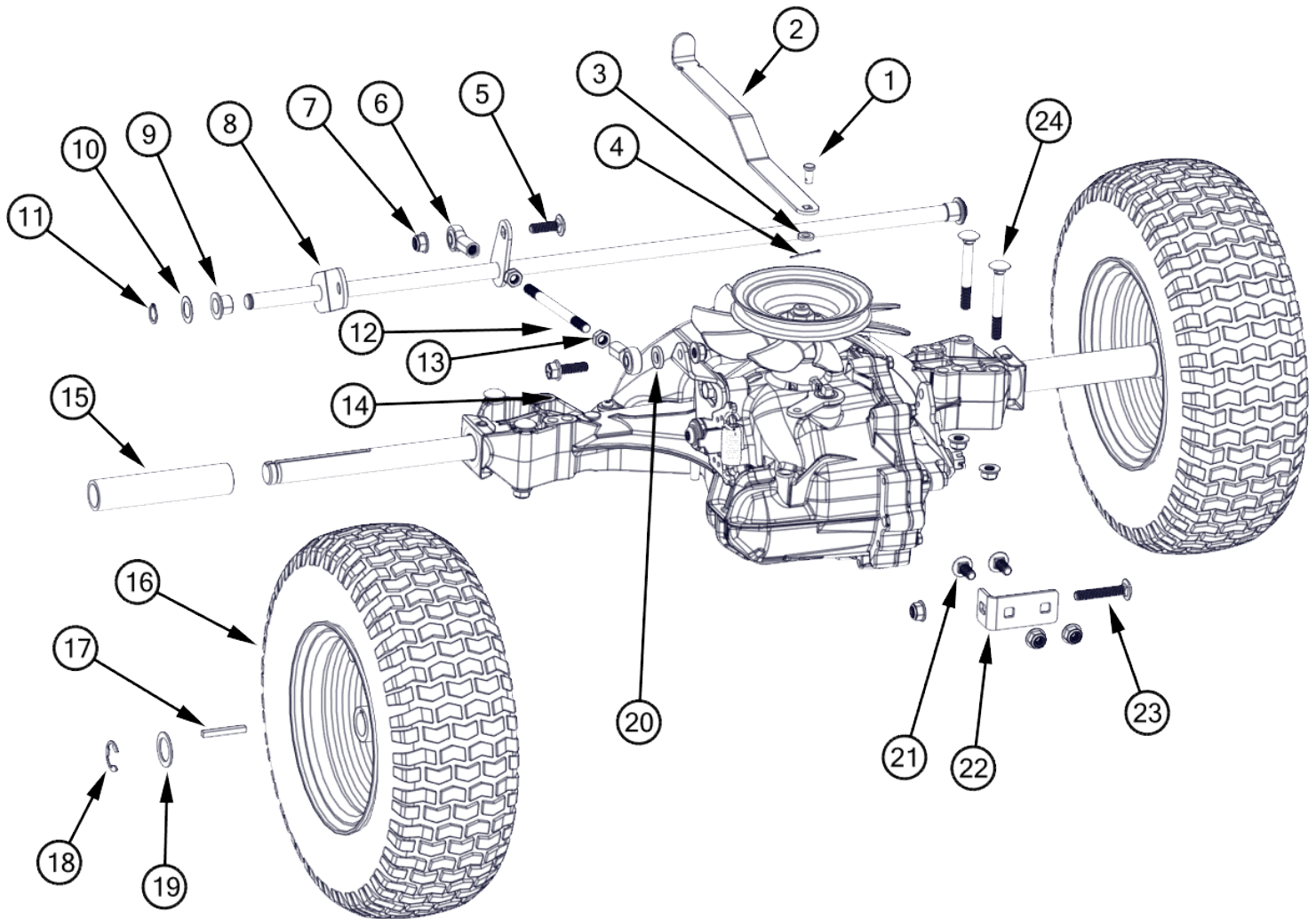
## Handle 2



Item	Part Number	Description (config)	Qty
1	20-1217-G	OP Handle Left	1
2	30-0045	IGUS Bushing	2
3	10-1388	Torsion Spring	1
4	20-1386	Spring Stop	1
5	20-1277	OP Switch Shaft ASM	1
6	20-1218-G	OP Handle Right	1
7	30-0067	5/16-18x1.75" Carriage Bolt	1
8	30-1658	Nylon Washer	2
9	10-0737-G	Control Lever (Bracket Only)	1
10	30-1544	Washer 5/16 ID ; 7/8 OD	1
11	10-1543	Compression Spring	1
12	30-1665	5/16-18 x 2.5" Hex Bolt	2
13	30-0412	5/16-18 x 0.75 Carriage Bolt	8

Item	Part Number	Description (config)	Qty
14	30-1659	Fiber Washer	1
15	10-1233	Spacer	4
16	10-0739	Control Rod	1
17	30-0487	3/8-24 Hex Nut	2
18	40-0424	Yoke End 3/8-24	2
19	20-0659	Handle ASM	1
20	30-0051	5/16-18 Flange Nylock Nut	11
21	10-0755	Control Linkage	1
22	10-1280-G	Control Lever (Bracket Only)	1
23	30-0943	1/4-20 x 0.75 SN CB	2
24	10-1234	Plastic Ball Knob	2
25	10-0736-G	Control Base	2

# Transmission ASM

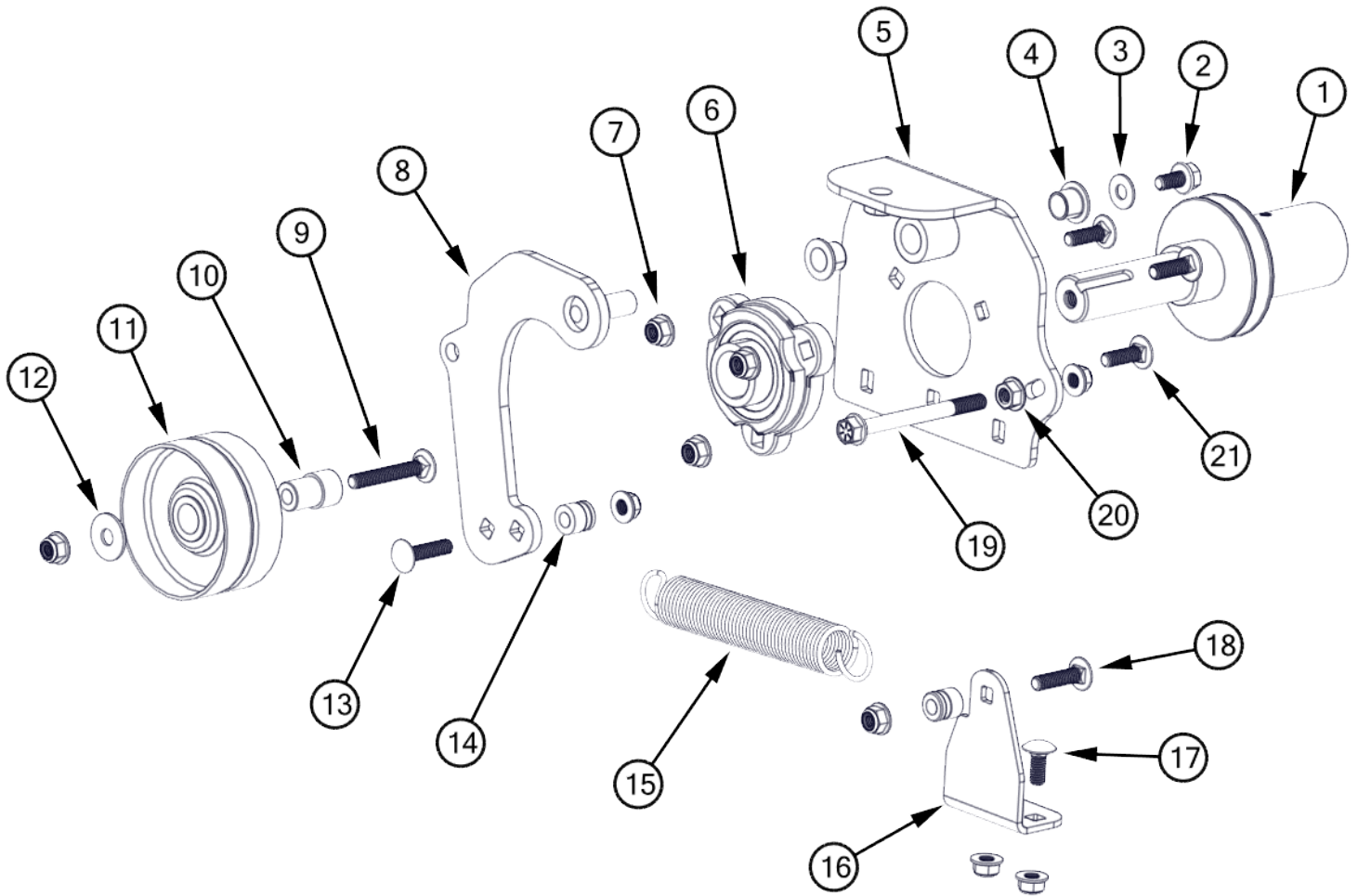


Item	Part Number	Description (config)	Qty
1	30-0001	1/4" Clevis Pin	1
2	10-1309	Neutral Lever	1
3	30-0003	Plastic Spacer	1
4	30-0002	Cotter Pin	1
5	30-0374	5/16-18 x 1.0" Carriage Bolt	1
6	40-1251	Rod End 5/16-24 Female	2
7	30-0051	5/16-18 Flange Nylock Nut	9
8	20-0725	Pivot ASM	1
9	40-0112	IGUS Bushing	2
10	30-0423	Flat Washer 1/2" ID; 7/8" OD	2
11	30-0422	1/2" External Retaining Ring	2
12	40-1252	Control Rod	1
13	30-1254	5/16-24 Hex Nut	2

Item	Part Number	Description (config)	Qty
14	30-0068	5/16-18 x 1.0" Flange Hex Bolt	1
15	10-0767	Rear Wheel Spacer	2
16	40-0187	Turf Tire 13x5.00-6	2
17	30-1314	3/16 x 1.50" Key	2
18	30-1316	E-Clip 3/4"	2
19	30-1315	Washer 3/4 ID	2
20	10-0950	.375 x .700 Washer	1
21	30-0412	5/16-18 x 0.75 Carriage Bolt	2
22	10-0743	Trans Torq Brkt	1
23	30-0067	5/16-18x1.75" Carriage Bolt	1
24	30-0392	5/16-18 x 2.50 Carriage Bolt	4



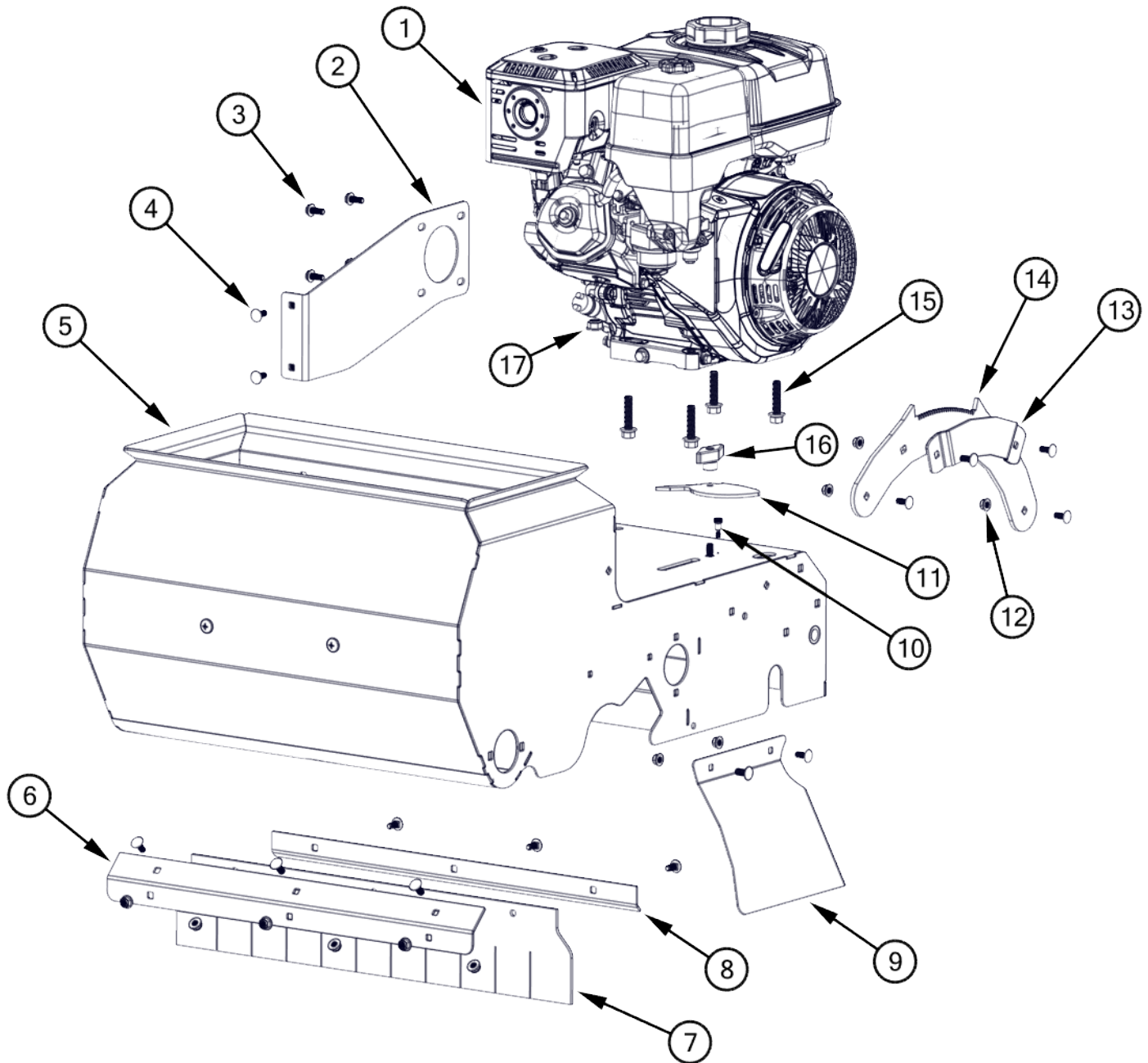
# Tension Arm ASM



Item	Part Number	Description (config)	Qty
1	40-0714	Seeder Engine Pulley	1
2	30-0911	5/16-18 x .625 Hex Bolt	1
3	30-1334	Washer 5/16" ID	1
4	40-0112	IGUS Bushing	2
5	20-1313	Bearing Plate ASM	1
6	40-0475	1" 3-Bolt Flange Bearing	1
7	30-0051	5/16-18 Flange Nylock Nut	9
8	20-0718	Tension Arm	1
9	30-1336	5/16-18 x 2.00 Carriage Bolt	1
10	10-1335	Pulley Spacer	1
11	40-0662	Flat Idler 4"	1

Item	Part Number	Description (config)	Qty
12	30-0907	Washer 5/16 ID; 1" OD; .060t	1
13	30-0411	5/16-18 x 1.25 Carriage Bolt	1
14	10-0765	Spring Stud	2
15	10-0761	Extension Spring 22lb	1
16	10-0764	Spring Bracket	1
17	30-0412	5/16-18 x 0.75 Carriage Bolt	2
18	30-0411	5/16-18 x 1.25 Carriage Bolt	1
19	30-1352	5/16-18 x 3.50 Hex Bolt	1
20	30-0249	5/16-18 Flange Nut Serrated	1
21	30-0374	5/16-18 x 1.0" Carriage Bolt	3

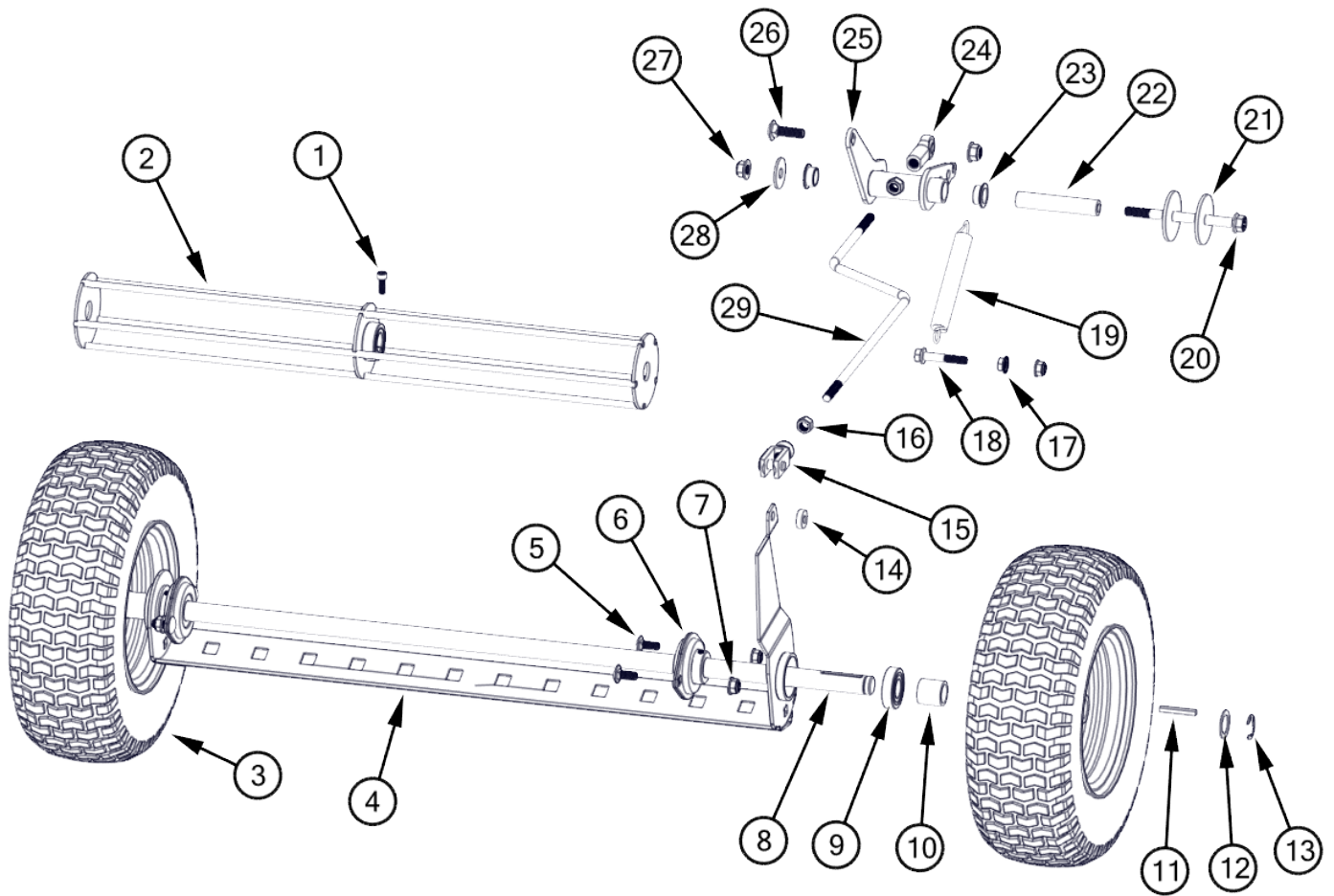
# Engine ASM



Item	Part Number	Description (config)	Qty
1	40-0194	Honda GX390	1
2	10-1311	Engine Plate	1
3	30-0912	5/16-24 x .75 Hex Bolt	4
4	30-0412	5/16-18 x 0.75 Carriage Bolt	14
5	20-0652-G	Seeder Frame 24"	1
6	10-0721	Debris Shield	1
7	10-1295	Rubber Flap	1
8	10-1298	Rubber Flap Bracket	1
9	10-0769-G	Toe Guard	1

Item	Part Number	Description (config)	Qty
10	30-1644	5/16" x 3/8" Shoulder Bolt	1
11	10-0754	Seed Dial	1
12	30-0051	5/16-18 Flange Nylock Nut	11
13	10-0735	Retaining Bracket	1
14	10-0709	Depth Bracket	1
15	30-1340	7/16-14 x 1.75 Hex Bolt	4
16	30-0287	5/16-18 2.5" T-Knob	1
17	30-0050	7/16-14 Flange Nylock Nut	4

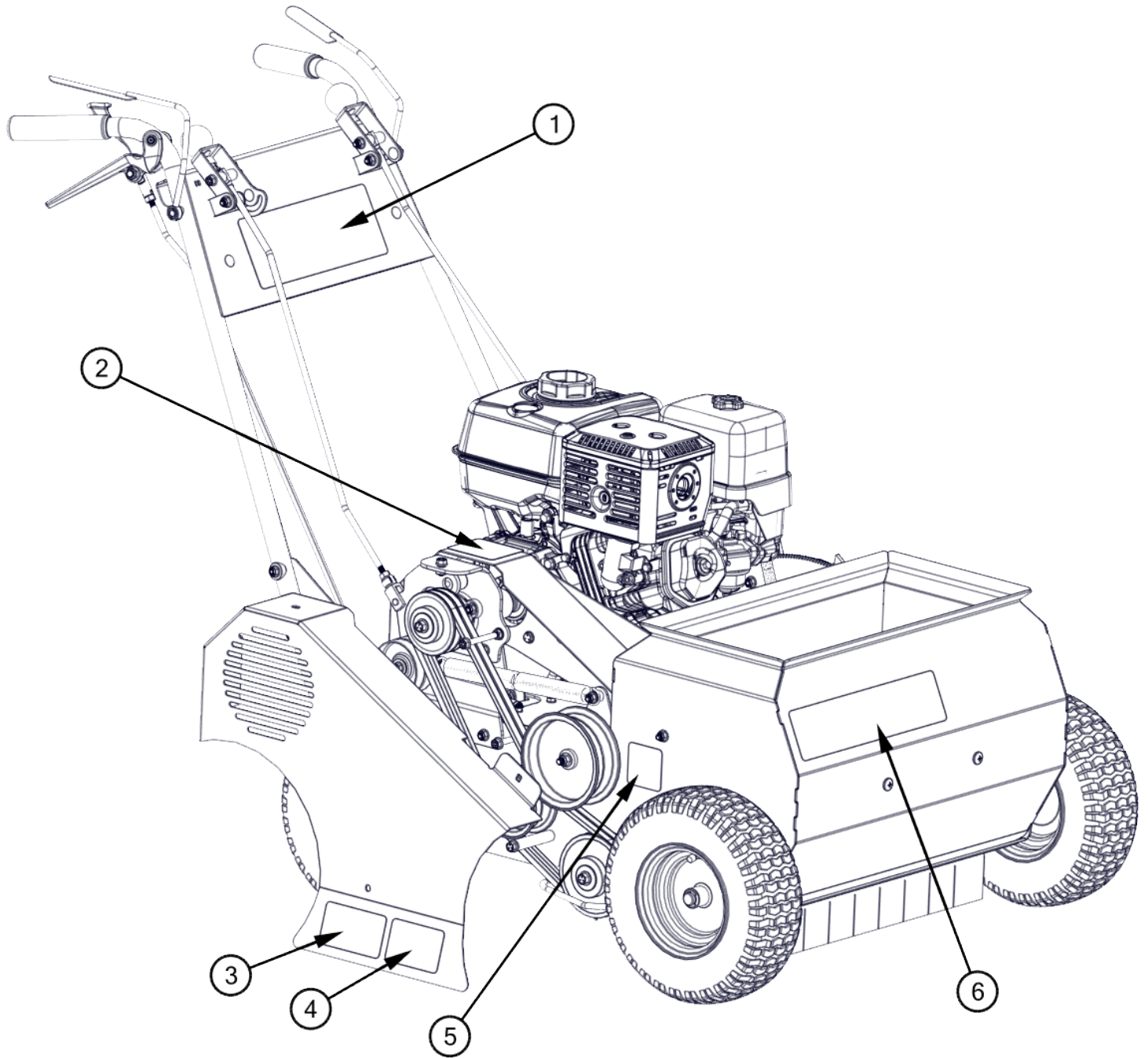
# Seed Delivery ASM



Item	Part Number	Description (config)	Qty
1	30-3547	1/4-20 x 5/8 Socket Screw	1
2	20-0205	20" Mixer ASM	1
3	40-0187	Turf Tire 13x5.00-6	2
4	20-1302	Seed Gate	1
5	30-0412	5/16-18 x 0.75 Carriage Bolt	4
6	40-0199	Stamp Flange Bearing 3/4"	2
7	30-0051	5/16-18 Flange Nylock Nut	5
8	10-0202	24" Axle Shaft	1
9	40-0682	Seed Gate Bearing	2
10	10-0766	Front Wheel Spacer	2
11	30-1314	3/16 x 1.50" Key	2
12	30-1315	Washer 3/4 ID	2
13	30-1316	E-Clip 3/4"	2
14	30-1307	Spacer 5/16" ID; 6mm thick	1
15	40-0424	Yoke End 3/8-24	1

Item	Part Number	Description (config)	Qty
16	30-0487	3/8-24 Hex Nut	2
17	30-0249	5/16-18 Flange Nut Serrated	1
18	30-0248	5/16-18 x 1.75 Flange Hex Bolt	1
19	10-1024	Seed Gate Spring	1
20	30-2587	3/8-16 x 4.00 Hex Flange Bolt	1
21	10-1305	Washer	2
22	10-1304	Pivot Spacer	1
23	40-1150	5/8"-3/4" x 3/8" Igus Bushing	2
24	40-0813	3/8 Rod End Female	1
25	20-0751	Bell Crank	1
26	30-0416	3/8-16 x 1.25 SN Carriage Bolt	1
27	30-0105	3/8-16 Nyloc Flange Nut	2
28	30-0880	Washer 1.0 x 0.406 x 0.06	1
29	10-0752	Control Linkage	1

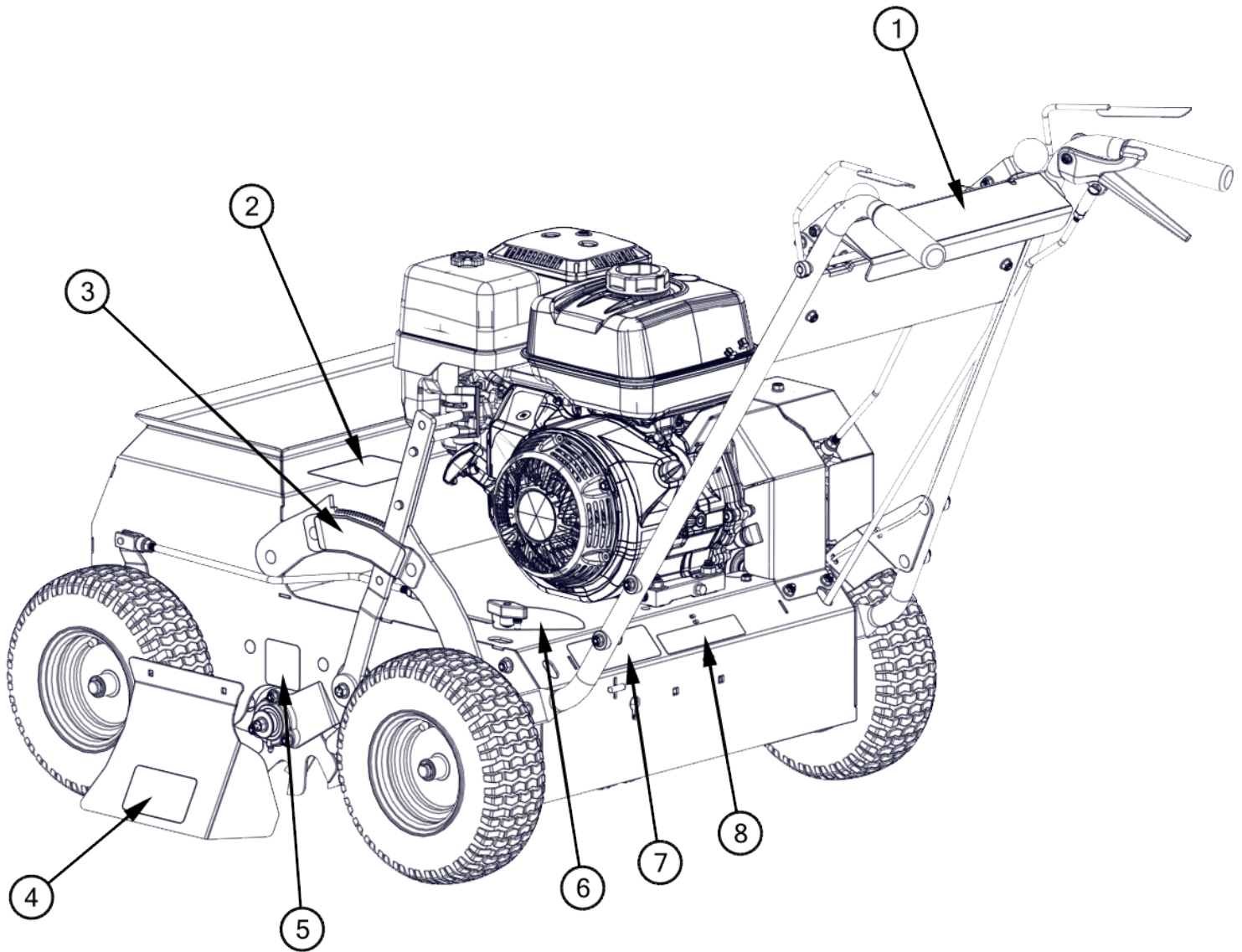
# Decal 1



Item	Part Number	Description (config)	Qty
1	60-0047-L	Lesco Renovator 24 Decal	1
2	60-0040	Belt Routing Decal	1
3	60-0024	Danger Decal	1
4	60-0238S-L	Lesco Decal Small	1
5	60-0042	Warning Decal	1
6	60-0150-L	Renovator 24 Decal	1



## Decal 2



Item	Part Number	Description (config)	Qty
1	60-0046-L	Lesco Control Panel Decal	1
2	60-0048-L	Seed Flow Decal	1
3	60-0043-L	Depth Control Decal	1
4	60-0024	Danger Decal	1
5	60-0042	Warning Decal	1
6	60-0044-L	Seed Flow	1
7	60-0045-L	Frame Serial Number Decal	1
8	60-0041-L	Transmission ByPass Decal	1