

THE
BARRETO
MODEL 912HM
HYDRAULIC TRENCHER OWNER'S MANUAL

CONGRATULATIONS!

You are now the proud owner of the BARRETO trencher. The OPERATOR'S MANUAL is attached to the machine. Please study it and this manual to become familiar with the trencher, its characteristics, and method of operation. Pay particular attention to the safety and operating instructions to prevent personal injury or equipment damage.

If you have any questions or need any replacement parts in the future, please contact us at your convenience. Our toll-free phone number, fax and email are listed below.

THANK YOU for your patronage and confidence in BARRETO equipment.

Barreto Manufacturing, Inc.
Innovative Equipment Engineered to Last
66498 Hwy 203, La Grande, OR 97850
(800) 525-7348 (541) 963-7348
FAX (541) 963-6755
E-Mail: info@barretomfg.com
Web Site: <http://www.barretomfg.com>

Machine Identification Record

Machine model number _____

Machine serial number _____

Engine manufacturer _____

Engine model number _____

Engine serial number _____

TABLE OF CONTENTS

TRENCHER DELIVERY AND ASSEMBLY INSTRUCTIONS	3
SERVICE INFORMATION	3
HOURLY METER	4
TRENCHER INTENDED USE	4
CHAIN INSTALLATION	5
MAINTENANCE PREPARATION	5
WARRANTY OF BARRETO MANUFACTURING EQUIPMENT	6
ROUTINE MAINTENANCE	6
WHEEL DRIVE VALVE CABLE ADJUSTMENT	7
WHEEL DRIVE NEUTRAL ADJUSTMENT	8
CHAIN VALVE ADJUSTMENT	9
LUBRICATION REQUIREMENTS	10
ELECTRICAL SCHEMATIC - HONDA GX270	11
HYDRAULIC SCHEMATIC	12
SPECIFICATIONS	13
TROUBLESHOOTING GUIDE	14
INDEX	16

TRENCHER DELIVERY AND ASSEMBLY INSTRUCTIONS

Upon delivery, check for freight damage and any missing items. Report any damage immediately to the carrier and Barreto Manufacturing and take pictures if possible. Remove trencher from shipping crate.

When documentation refers to “right side” or “left side”, it is relative to the operator’s position with both hands on the handlebars.

Install cushion pad, boom cushion, and boom. **CAUTION!!** The boom is heavy. You may want help to lift it into place. Push boom on as far as it will go onto the boom mount (part of the chain motor housing weldment). Be sure adjuster screw is backed out.

SERVICE INFORMATION

- Your trencher should arrive with 9.5 gallons of hydraulic fluid in the tank. Check reservoir level using the sight glass on the right side of the tank. Shipping regulations may prohibit shipping with the hydraulic fluid. If required, add tractor transmission / hydraulic fluid to the reservoir. For machine use in ambient temperatures between +32°F (0°C) and +90°F (32°C) hydraulic fluid ISO 68 is recommended with anti-foaming additives. If the machine is operated at temperatures below +32°F (0°C) then hydraulic fluid ISO 46 is recommended.
- Recheck oil level after trencher has been run and oil has circulated through the components. Routinely check the level thereafter.
- Change hydraulic fluid filter after the first 50 hours of use. Change it every 200 hours thereafter.
- Add approximately one quart (1 liter) of hydraulic fluid to the reservoir with each filter change.
- Discard the old filter according to environmental standards in your geographic area.
- Check all hydraulic fittings for leaks and tighten if necessary.
- The grease zerk on chain shaft housing should be greased after every 4 to 8 hours of use.
- The grease zerk in the front wheel should be greased after every 8 hours of use.
- Grease zerks on cylinder rod end and boom pivot should be greased daily.
- Grease zerks on each side of the boom cylinder and on front wheel hub should be greased once a week..
- Grease zerks on the wheel hubs and hub lock screws should be greased and freewheeled once a week or so, depending upon free wheel use.
- The grease zerk in the chain roller bearing should be greased after every 4 to 8 hours of use.
(See page 10 for illustrations of lubrication points.)

IMPORTANT: The engine on the Barreto trencher is normally serviced prior to shipping. However, shipping regulations may prohibit shipping with fuel or oil in the machine. Check levels and add oil and fuel as required before starting engine. Service the engine according to the engine manual before starting.

IMPORTANT: If the couplers between the engine and the pump are moved or removed for any reason, it is **CRITICAL** that they have a 1/16" gap between them when reinstalled. Failure to have this gap will result in rapid wear and failure of your pump!

NOTE: It is very important to move the fuel shutoff lever to the closed position after stopping the engine. Failure to do so could cause fuel to leak down into the cylinder and crankcase. Damage resulting from this will void your engine warranty and not be covered.

WARNING: Running the trencher without hydraulic oil will cause serious damage to the hydraulic pump. INSURE THAT THE RESERVOIR OIL LEVEL IS TO THE SIGHT GLASS BEFORE STARTING THE MACHINE.

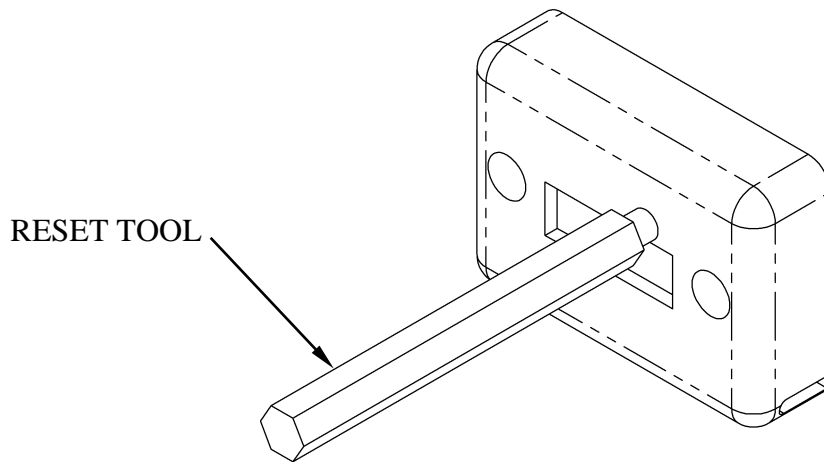
HOURLY METER

The **DGI® TACH/HOUR** hour meter tracks the hours of machine operation in order for routine maintenance to be performed on a timely basis.

Your **DGI®** hour meter is pre-set at the **DGI®** factory to go into **Flash Alert** mode at 25-hour intervals. Although the engine manufacturer does not require changing engine oil this often, **due to heavy-duty use and extreme conditions inherent to tiller use, Barreto Manufacturing strongly recommends frequent oil changes.**

Refer to this manual for equipment service requirements and to the **Engine Manual** for other engine service requirements.

While **Flash Alert** is active, hold the tip of the RESET TOOL (Key Kancel Wand) against the meter as shown. Within several seconds, the display will stop flashing indicating the Service Interval has been reset. If the wand gets lost, a small mechanic's pick-up magnet will work.

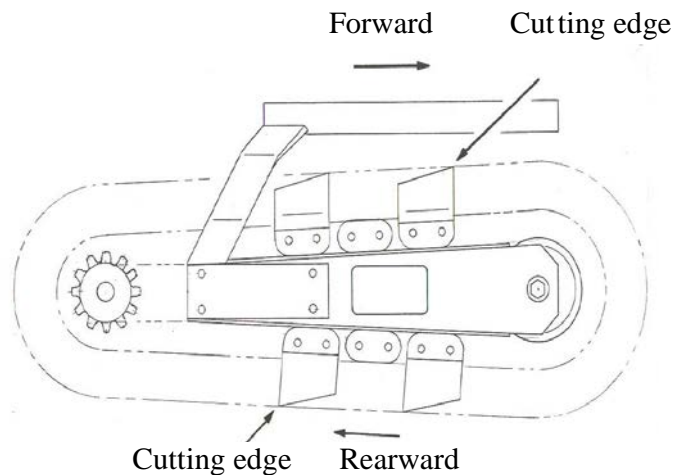


TRENCHER INTENDED USE

This machine is designed for digging trenches in “normal” ground of reasonably soft dirt and stones up to 6” (15cm) in diameter. Ground with larger stones, high clay content, very hard packed, very dry, or in a frozen condition may be unsuitable for normal trenching. Consider using a backhoe or other heavier equipment for such conditions.

CHAIN INSTALLATION

1. Slide chain under sprocket, with teeth in the correct cutting direction. Properly installed, the cutting edges of the chain will face forward on the top of the boom and rearward on the bottom of the boom (see diagram below).
2. Push digging boom control lever forward to lower boom onto the chain.
3. Wrap chain around boom and sprocket. Install chain master link or link pin.
4. Use boom adjuster screw to tighten chain. Chain should have enough slack to allow approximately 1" to 2" of space between middle of boom and chain when boom and chain are straight out in a horizontal position.
5. Tighten adjuster screw locknut.



MAINTENANCE PREPARATION

Only trained & qualified personnel should perform maintenance or repairs of the trencher. Before performing any service, maintenance, adjustments, repairs, or off-season long-term storage, follow the SHUT DOWN PROCEDURE in the OPERATOR'S MANUAL.

Do not touch the engine, muffler, or any of the hydraulic components until cool.



WARNING: Muffler and engine get hot enough to cause serious burns. For the safety of yourself and others, allow enough time for the engine, muffler, and the hydraulic fluid to cool completely before performing any cleaning or maintenance.



Avoid contact with hydraulic fluid.



WARNING: When machine is operating, hydraulic fluid is under extreme pressure and can get under skin and burn or poison.

If you need to lower the dig chain boom without power, do the following:

1. Position a pan under the trencher to catch hydraulic fluid.
2. Support the boom front end with a hoist or forklift.



WARNING: The boom with dig chain is heavy. Manpower alone is not recommended, but if necessary, use a team of two strong workers to support the boom, and a third worker to loosen the hose.

3. Loosen the hose at the rod end (front) port of the boom cylinder and lower the boom.
4. If it still will not lower, then loosen the hose at the back end port of the boom cylinder.

BARRETO MANUFACTURING, INC. EQUIPMENT WARRANTY

Barreto Manufacturing, Inc. warrants all **BARRETO** equipment to be free of defects in material and workmanship for a period of one (1) year. All **BARRETO** fuel components, fuel tank, cap, lines & fittings are warranted for two (2) years. Warranty period begins on date of delivery to the original user.

This warranty is in lieu of all other warranties, whether written or implied, and is limited to:

1. Replacement of parts returned to the dealer and/or factory and determined defective upon inspection. (Replacement for parts to dealers shall be at dealer cost plus shipping charges.)
2. Time for pick-up and/or delivery, transportation of service calls by dealers is excluded. Manufacturer reserves the right to determine reasonable time required for repair.

Warranty does not apply to damage caused by abuse or neglect. Time and materials required for normal maintenance and service are also excluded from warranty coverage.

Engines, engine attached fuel tanks, engine accessories, batteries and tires are warranted by the original manufacturer and are not covered by the Barreto Equipment Warranty.

Wear parts such as dig chains, dig teeth, sprockets, chain rollers, bearings, bushings etc. are excluded unless it can be determined that a defect has contributed to premature wear.

ROUTINE MAINTENANCE

Routinely check the condition, clean, tighten, repair, or replace as necessary the following:

- Dig chain boom guard, muffler guard, hydraulic hoses and fittings
- Fuel lines, fasteners, Safety decals

Clean safety decals often using soap and water. **Do not use** abrasive cleaners or solvents such as mineral spirits that may damage the decals. Replace any damaged (unreadable) or missing decals. If you replace a machine part that has one or more decals affixed to it, replace the decals also. Replacement parts and decals can be purchased from Barreto Manufacturing, Inc. When attaching decals, the temperature of the mounting surface must be at least 40°F (5°C) and must be clean and dry.

Service the engine according to the engine owner's manual. Follow the directions for all aspects of service including air filter change, oil level checking, filling, draining, disposal of engine oil, disposal of petrol/gasoline, and off-season long-term storage.

Off-season long-term storage of the trencher can be at any ambient temperature.

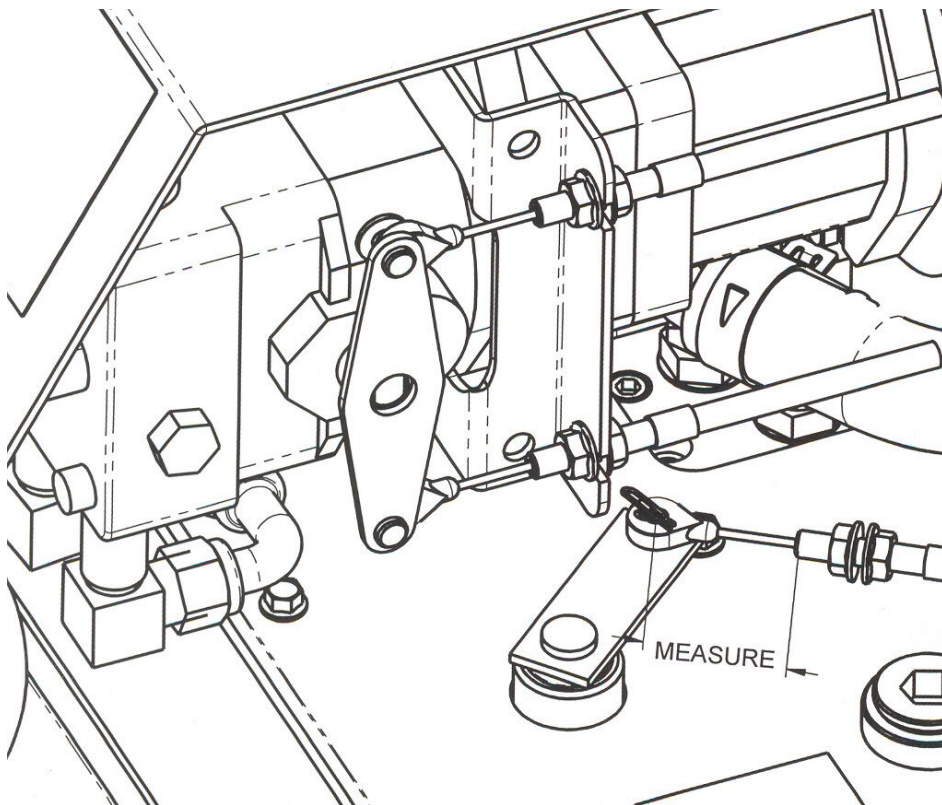


WHEEL DRIVE VALVE CABLE ADJUSTMENT

The clutch cable and lever must have some free play. The cable will stretch and occasionally needs adjustment.

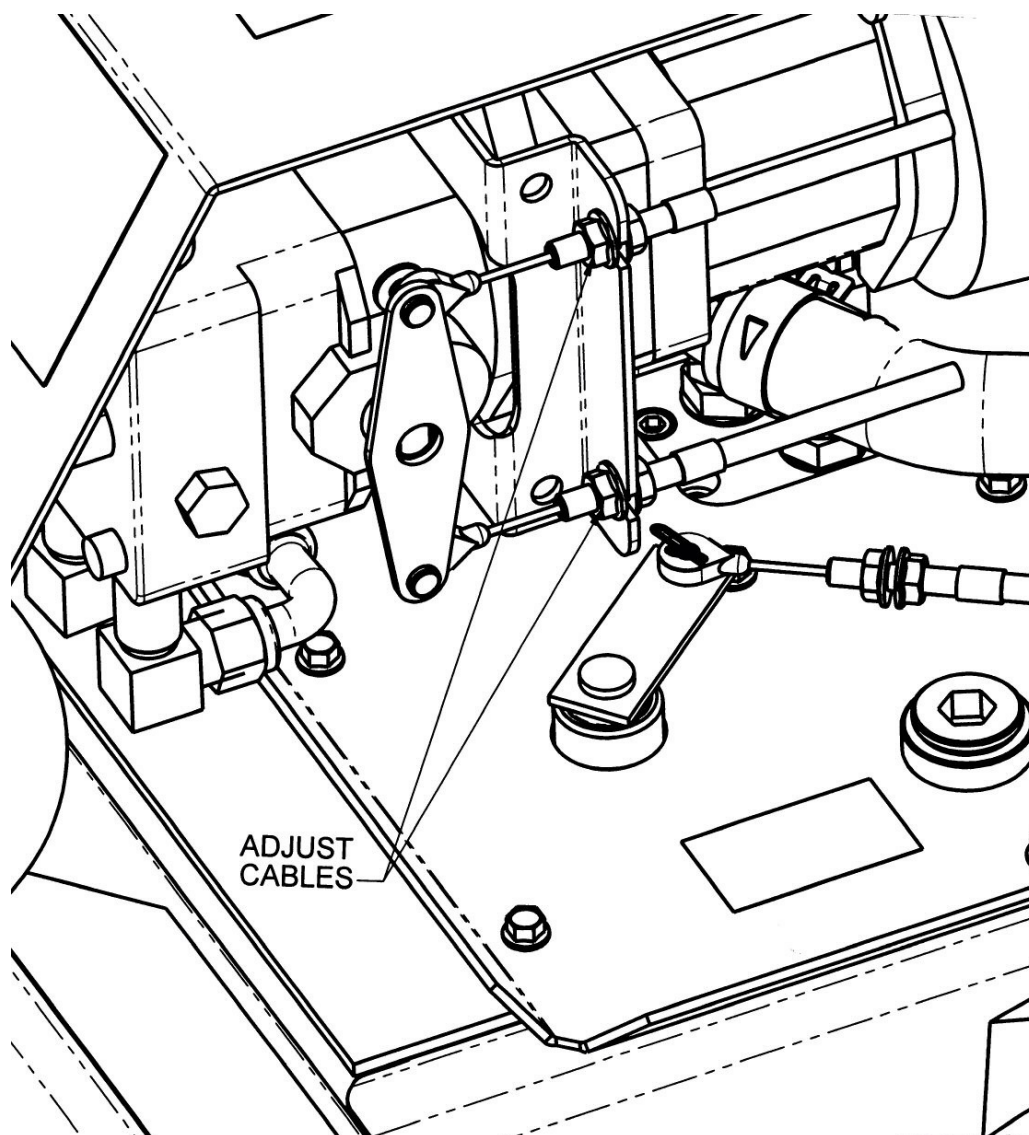
1. Rotate the actuator arm clockwise, by hand, to take up any free play. Measure the distance from the pin of the actuator arm to the end of the cable housing.
2. Pull the clutch lever all the way up until it touches the handle bar grip. With the lever pulled up, again measure the distance from the pin of the lever to the cable housing. Calculate the difference.
3. Adjust the cable for 7/16" to 1/2" movement of the actuator arm at the pin. Do not include any lever free play in the measurements.

To see a video on how to do this adjustment, enter the following address in your browser URL window: <https://www.youtube.com/watch?v=utUdozpYBcg&feature=youtu.be>



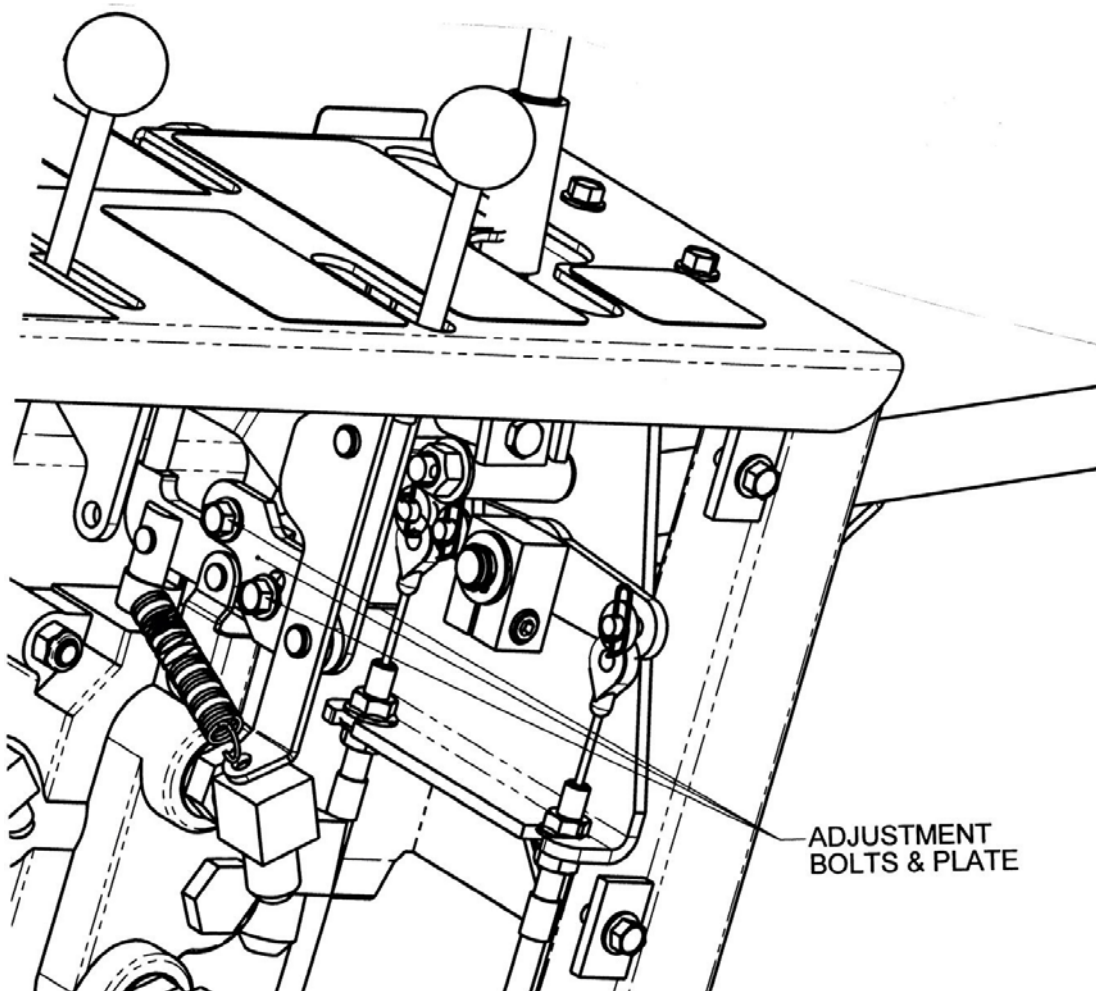
WHEEL DRIVE NEUTRAL ADJUSTMENT

The speed control cables may need to be adjusted after some use. If the machine creeps while the speed control is in neutral, the speed cables will need adjustment. Adjust the cables to bring the pump cable arm to the neutral position (vertical) when the speed control also is in neutral. Adjust the cables to eliminate slack, but do not over tighten them so they are extremely tight against each other.



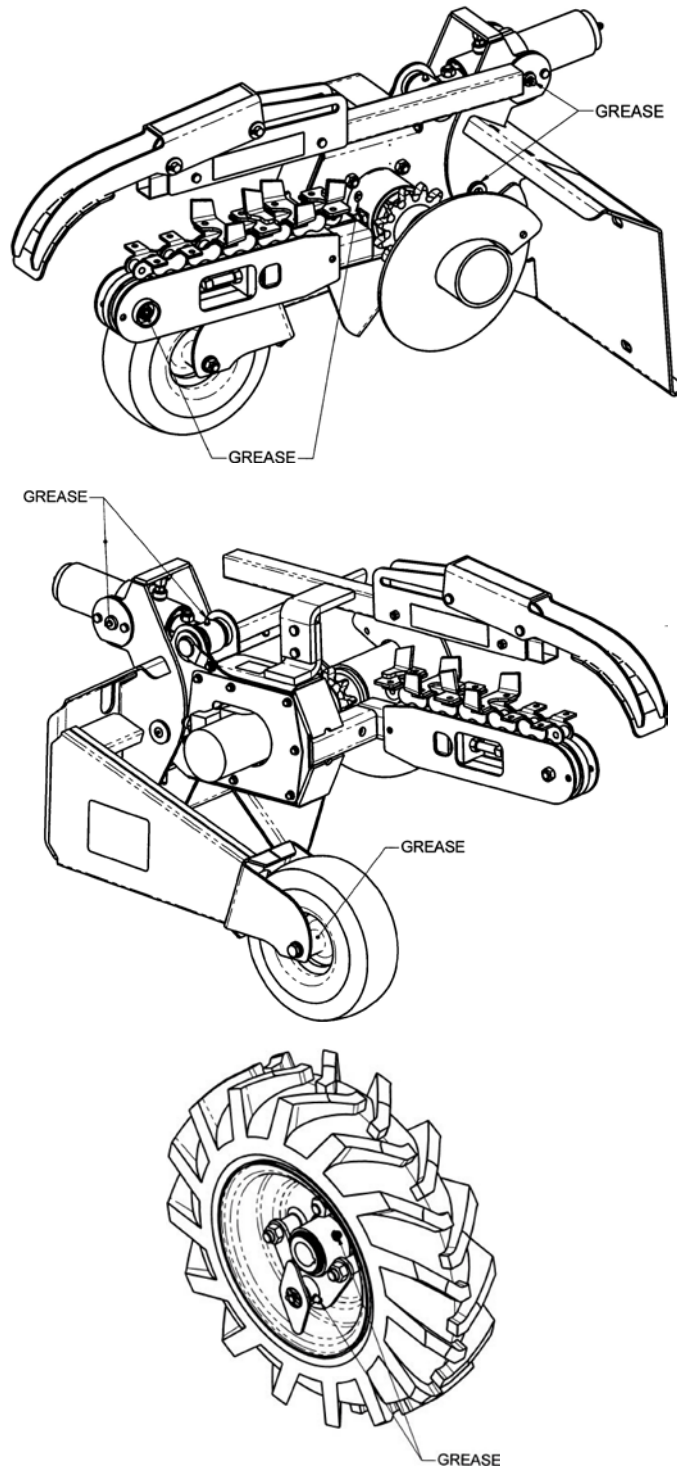
CHAIN VALVE ADJUSTMENT

The chain valve control should be adjusted to completely activate the chain valve when the dig chain control is in the ON' position. To check this adjustment, put the chain on/off control in ON position (with engine stopped). Pull the clutch lever on left handlebar up until it touches the handgrip. While holding clutch lever up, push on the chain forward/neutral/reverse lever. It should be at the end of its stroke, thus not move down any more. If the chain F/N/R lever can be pushed down more, the valve spool lever should be adjusted. To adjust, remove back cover from the control panel. Loosen the 2 bolts on valve lever and rotate the lever plate down about 1/16". Re-tighten the bolts and check the lever stroke. Adjust so the valve lever comes to the end of its stroke just as the clutch lever touches the handgrip when chain valve control is in ON position.



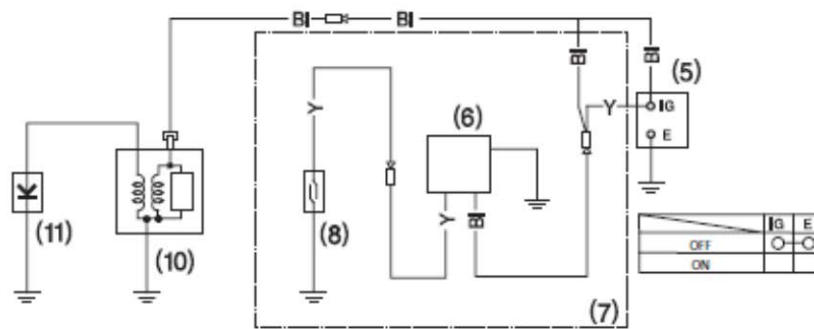
DAILY LUBRICATION REQUIREMENTS

Be sure to grease all lubrication points as outlined on page 3 of this manual.



ELECTRICAL SCHEMATIC - HONDA GX270

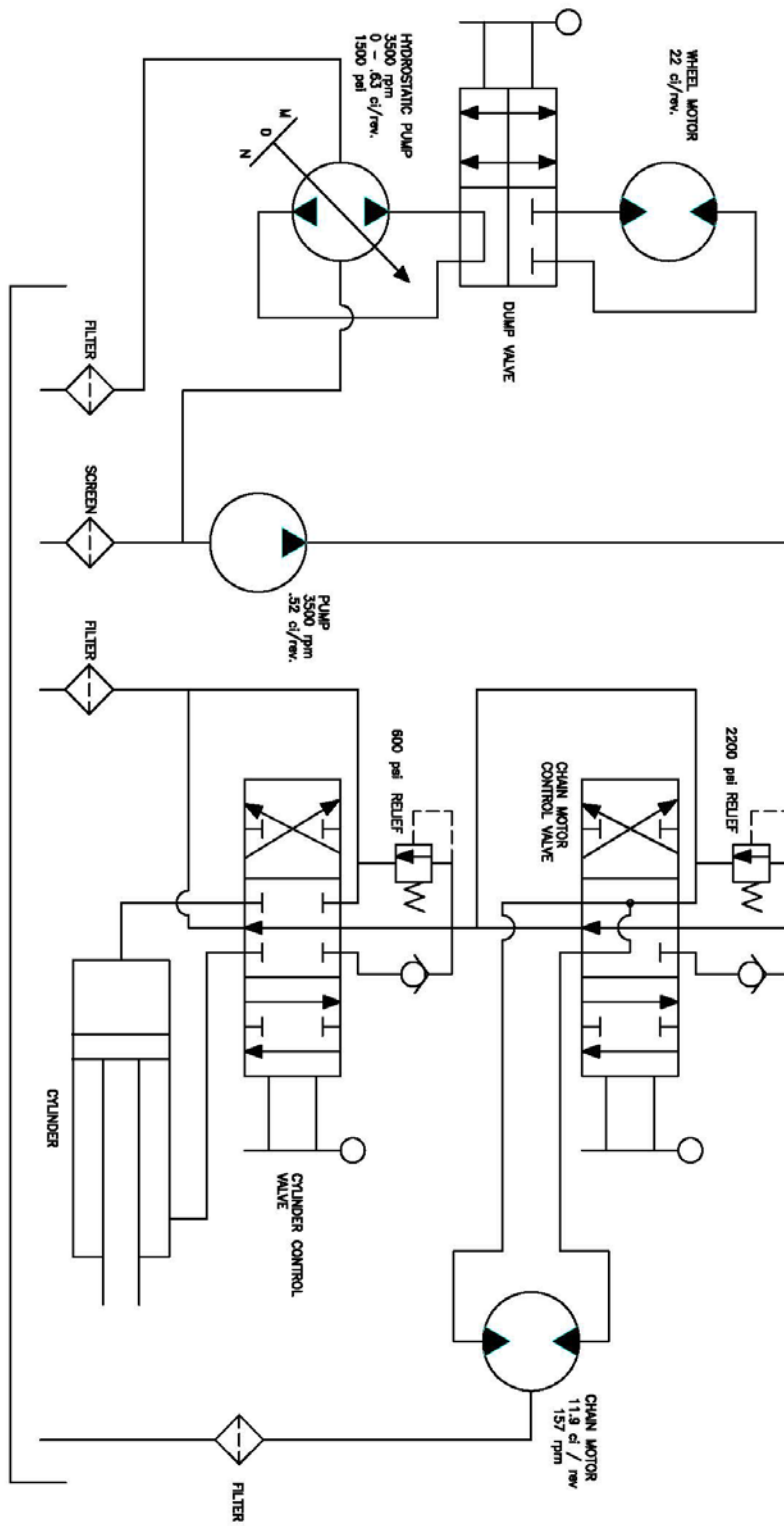
With Oil Alert® and Without Electric Starter



- | | |
|------------------------------|-----------------------|
| (1) CONTROL BOX | (8) OIL LEVEL SWITCH |
| (2) RECTIFIER | (9) CHARGING COIL |
| (3) FUSE | (10) IGNITION COIL |
| (4) CIRCUIT BREAKER | (11) SPARK PLUG |
| (5) ENGINE SWITCH | (12) STARTER MOTOR |
| (6) OIL ALERT UNIT | (13) STARTER SOLENOID |
| (7) Type with Oil Alert unit | (14) BATTERY (12 V) |

Bl	Black	Br	Brown
Y	Yellow	O	Orange
Bu	Blue	Lb	Light blue
G	Green	Lg	Light green
R	Red	P	Pink
W	White	Gr	Gray

HYDRAULIC SCHEMATIC



BARRETT

912 HYDRAULIC SCHEMATIC

SPECIFICATIONS

MODEL NUMBER

912HM

DIMENSIONS

Weight	620 lb. (281.23kg)
Height	43" (1.09m)
Length	81" (2.06m)
Width	28" (711.2mm)
Wheel Base	30" (762.25mm)

ENGINE

Engine Options	Honda GX270
----------------	-------------

Fuel	Gasoline
------	----------

Power: hp (kW) at 3600 RPM	8.5 hp (6.34kW)
----------------------------	-----------------

Fuel Capacity	0.95 U.S. gallons (3.6 liters)
---------------	--------------------------------

Engine Oil Capacity	0.63 quarts (.60 liters)
---------------------	--------------------------

Hour Meter	Standard
------------	----------

HYDRAULIC SYSTEM

Reservoir Capacity	9.5 U.S. gallons (35.96 liters)
--------------------	---------------------------------

OPERATIONS

Ground Drive, Forward	132 feet per minute (40.23m/min)
Digging Chain Speed	227 feet per minute (69.19m/min)
Ground Drive, Reverse	58 feet per minute (17.68m/min)

BOOM / CHAIN OPTIONS

Depths	12", 18" or 24"**(30.48cm, 45.72cm or 60.96cm)
--------	--

Widths	Standard 4" (101.60mm), Maximum 6" (152.4mm)
--------	---

Chain Types	Skip Cup, Double Cup, Bolted Shark, Combo Shark, Welded Shark
-------------	--

**NOTE: 24" Depth only available in 4" width.

912 TRENCHER TROUBLE SHOOTING GUIDE

CAUTION!! Always use extreme care when trouble shooting or making adjustments on the trencher. Stay clear of the chain and auger when the engine is running. Stop the engine before disassembling any component.

A. Entire hydraulic system does not operate and the engine is not under load.

- | | |
|--|--|
| 1. Broken or improperly adjusted clutch (actuator) cable | See clutch cable and actuator arm adjustment. Adjust or replace cable. |
| 2. Low hydraulic oil in tank | Add oil until it shows in sight gauge. |
| 3. Hydraulic pump-to-engine coupler has slipped. | Check for wear and replace both coupler halves and rubber spider, as needed. |

B. Engine lugs down or dies and wheels and chain do not turn.

- | | |
|--|--|
| 1. Rocks or other obstructions stopping chain. | Reverse chain momentarily to free it from obstruction. Raise boom and stop chain. See if obstruction can be removed from trench. |
| 2. Trenching depth or speed too great for soil conditions. | Decrease ground speed or trenching depth. |
| 3. Engine improperly tuned or maintained. | See engine manual and correct as needed. |
| 4. Low oil alert causes engine to shut down. | This may occur when trenching on hills. Level trencher, check oil and allow oil alert to reset. |
| 5. Engine losing power due to wear. | See engine manual. |

C. Chain fails to rotate, but wheel drive works.

- | | |
|--|--|
| 1. Chain motor worn. | Rebuild motor or replace. New motors are available from Barreto Manufacturing. |
| 2. Chain Control Relief Valve malfunctioning. | Adjust Relief Valve to 2200 psi or replace relief spring if needed. |
| 3. Sprocket spindle spline teeth worn or broken. | Replace spindle. |

912 TRENCHER TROUBLE SHOOTING GUIDE (Continued)

CAUTION!! Always use extreme care when trouble shooting or making adjustments on the trencher. Stay clear of the chain and auger when the engine is running. Stop the engine before disassembling any component.

D. Wheels fail to turn, but chain rotates.

- | | |
|---|--|
| 1. Hubs unlocked. | Lock the hubs. |
| 2. Wheel axle key sheared. | Replace key and other parts as needed. |
| 3. Wheel Drive Valve not fully activated. | Adjust valve cable as shown on page 8. |
| 4. Speed Cable broken or disconnected. | Replace or re-connect cable. |
| 5. Pump Cable Lever loose on shaft. | Tighten setscrew on Pump Lever. |

E. Oil leaks in hydraulic system.

- | | |
|-------------------------------------|--|
| 1. Fittings are loose. | Tighten fittings on hoses and adapters. |
| 2. Worn or broken hoses. | Replace damaged hoses. |
| 3. Oil around chain motor or shaft. | Inspect motor for leaking shaft seal. Rebuild or replace motor. New motors are available from Barreto Manufacturing. |

F. Foaming hydraulic oil coming from breather hose.

- | | |
|--------------------------|---|
| 1. Improper oil used. | Verify that hydraulic fluid used had antifoaming additives. Tractor transmission / hydraulic fluid ISO 68 is recommended for use in temperatures above +32°F. |
| 2. Air leaking into oil. | Inspect and tighten fittings and clamps on pump and hoses. |

G. Boom does not lift, or does not lower into ground.

- | | |
|--|---|
| 1. Boom lift relief valve malfunctioning | Adjust relief to 500 psi. This may require a replacement spring in valve. |
|--|---|

INDEX

ADJUSTMENTS, 5, 7, 8, 9, 14, 15
BOOM, 2, 3, 5, 6, 14, 15
CHAIN, 2, 3, 5, 6, 9, 13, 14, 15
CHAIN INSTALLATION, 5
CHAIN VALVE ADJUSTMENT, 2, 9
CLUTCH CABLE, 7, 14
DAILY LUBRICATION REQUIREMENTS, 10
ELECTRICAL SCHEMATIC - HONDA GX270, 2, 11
ENGINE, 3, 4, 5, 6, 9, 14, 15
GREASE, 3, 10
HOUR METER, 4
HYDRAULIC FILTER, 3, 6
HYDRAULIC FLUID, 3, 5, 15
HYDRAULIC SCHEMATIC, 2, 12
MAINTENANCE, 5, 6
SAFETY DECALS, 6
SIGHT GLASS, 3
SPECIFICATIONS, 13
SPEED CABLE, 8
TRENCHER DELIVERY AND ASSEMBLY INSTRUCTIONS, 2
TRENCHER INTENDED USE, 4
TRENCHER TROUBLE SHOOTING GUIDE, 14, 15
WARRANTY, 6
WHEEL DRIVE NEUTRAL ADJUSTMENT, 2, 8
WHEEL DRIVE VALVE CABLE ADJUSTMENT, 2, 7

THE
BARRETO
MODEL 912RM/912HM
HYDRAULIC TRENCHER OPERATOR'S MANUAL

TRENCHER INTENDED USE

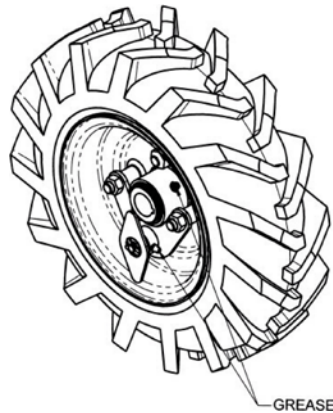
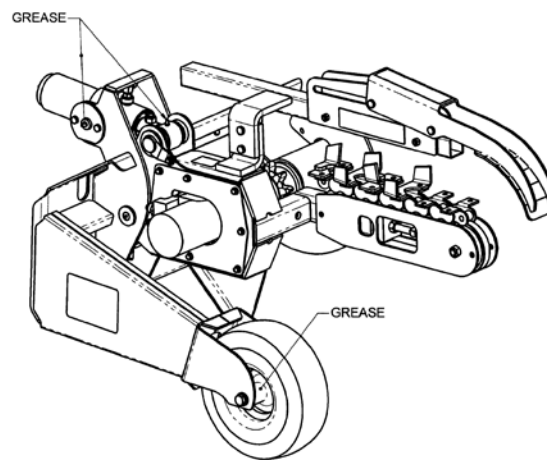
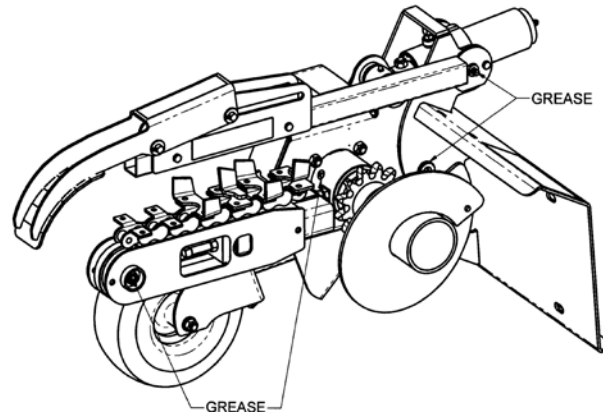
This machine is designed for digging trenches in “normal” ground of reasonably soft dirt and stones up to 6” (15cm) in diameter. Ground with larger stones, high clay content, very hard packed, very dry, or in a frozen condition may be unsuitable for normal trenching. Consider using a backhoe or other heavier equipment for such conditions.

TABLE OF CONTENTS

LUBRICATION REQUIREMENTS	2
SAFETY MESSAGES	3
SAFETY INSTRUCTIONS OVERVIEW	4
OPERATING INSTRUCTIONS	6
TRENCHING TIPS	7
OPERATOR PREPARATION	8
SHUT DOWN PROCEDURE	8
GROUND TRANSPORT OF THE TRENCHER	9
LOCATING UNDERGROUND UTILITIES	10
WORKSITE ASSESSMENT	11
CONTACT WITH UNDERGROUND UTILITIES	12

DAILY LUBRICATION REQUIREMENTS

Be sure to grease all lubrication points as outlined below.



- The grease zerk on chain shaft housing should be greased after every 4 to 8 hours of use.
- The grease zerk in the front wheel should be greased after every 8 hours of use.
- Grease zerks on cylinder rod end and boom pivot should be greased daily.
- Grease zerks on each side of the boom cylinder and on front wheel hub should be greased once a week.
- Grease zerks on the wheel hubs and hub lock screws should be greased and freewheeled once a week or so, depending upon free wheel use.

SAFETY MESSAGES

General safety messages are listed in this Safety Messages section. Specific safety messages appear as appropriate in this manual where a potential hazard may occur if procedures or instructions are not followed correctly and completely.

SAFETY SYMBOL



This is the international safety alert symbol. This symbol is used in combination with a signal word and written message to warn you of a potential for bodily injury or death.

A signal word "DANGER", "WARNING", or "CAUTION" is used with the safety alert symbol.



DANGER: Imminent hazards, that if not avoided, will result in serious personal injury or death.



WARNING: Potential hazards or unsafe practices, that if not avoided, could result in serious personal injury or death.



CAUTION: Potential hazards or unsafe practices, that if not avoided, could result in minor personal injury, product damage, or property damage.

Safety decals with a signal word "DANGER", "WARNING", or "CAUTION" are affixed to the trencher near specific hazards.

Read this manual and study ALL decals on the trencher before operating the trencher.



SAFETY INSTRUCTIONS OVERVIEW

READ SAFETY AND OPERATING INSTRUCTIONS BEFORE OPERATING!

USE COMMON SENSE AND PLENTY OF IT!

The CLUTCH LEVER on the left handlebar is for the operator's protection. All motion stops when the lever is released.

DO NOT TAPE THE CLUTCH LEVER UP or otherwise by-pass this safety feature!

Call before you dig. If you do not call, you may cause an accident; suffer injuries or death; cause interruption of services; damage the environment; and/or incur project delays. Expect to be held liable for any damages caused, if you fail to call.



DANGER: Buried electric cables or gas lines can cause serious injury or death if struck with dig chain. Always determine location of utilities before trenching.



WARNING: Fiber optic cables convey laser light that can injure your eyesight.

STAY CLEAR of moving parts on the trencher.



DANGER: Digging chain, auger and other moving parts can cut off arms, legs, or fingers. Contact with the digging chain or auger while in operation will cause serious injury or even death.

Wear safety goggles and a hard hat while operating or observing!



WARNING: The dig chain may throw stones and debris.

Wear adequate hearing protection while operating or observing.



WARNING: Exposure to loud noise is cumulative and may permanently damage your hearing.

Wear safety boots and gloves. Wear close-fitting clothing. Contain long hair. Do not wear jewelry. Wear reflective clothing if working near traffic.

Only operate outdoors and avoid breathing engine exhaust and fumes.



WARNING: Engine exhaust contains carbon monoxide gas that is toxic. Breathing it can cause unconsciousness and death.

Adequate lighting is required, daylight or artificial, for safe operation of the trencher.

Allow adequate side and overhead clearances between trencher and buildings, fences, and trees.



WARNING: If the dig chain contacts an object the digging chain can climb upward quickly and tip the trencher toward the operator. Serious injury or death will result by operator contact with the moving chain. The digging chain can suddenly drag the machine forward if the trencher is forced too quickly into the ground or catches on a buried object.

Insure that the CHAIN FORWARD/NEUTRAL/REVERSE LEVER is in NEUTRAL when not actually trenching.



WARNING: Contact with the dig chain or auger while in operation will cause serious injury or even death. The teeth of the dig chain are sharp. Avoid contact even when the chain is not moving.



SAFETY INSTRUCTIONS OVERVIEW (continued)

Avoid inclines if at all possible.



WARNING: Navigating on any incline increases the danger of the trencher losing traction or rolling over, especially if the surface is wet. If you lose control get out of the way immediately to avoid personal injury. Navigation on inclines should be especially slow and turns very gradual. Refer to the incline diagram in the section, “GROUND TRANSPORT”.



WARNING: The weight of the trencher or walking near the edge of the trench could cause collapse of the trench wall.
Avoid operating adjacent to drop-offs or embankments.

Keep away from tires to avoid getting crushed.



WARNING: Getting run over by the trencher will cause injury.

Always leave trencher parked on a level surface.



WARNING: Do not park on incline. Move the trencher to a level surface.
Do not leave trencher unattended with the engine running.

Do not operate trencher near any source of flammable dust or vapors.



WARNING: Sparks from the engine exhaust can cause an explosion or fire in a flammable or explosive atmosphere. Fuel fumes can catch fire or explode.

Do not operate trencher near flames or sparks.



WARNING: Fuel fumes can catch fire or explode.

Shut off engine and allow it to cool before refueling.



WARNING: Fuel fumes can catch fire or explode. Do not smoke when refueling. Do not refuel near a source of flames or sparks.

Do not touch the engine, muffler, or any of the hydraulic components until cool.



WARNING: Muffler and engine get hot enough to cause serious burns. For the safety of yourself and others, allow enough time for the engine, muffler, and the hydraulic fluid to cool completely before performing any cleaning or maintenance.

Avoid contact with hydraulic fluid.



WARNING: When machine is operating, hydraulic fluid is under extreme pressure and can get under skin and burn or poison.

Keep others away. If the job site is near a road or pedestrian path, warn and divert both motorized traffic and pedestrians. As appropriate, use traffic flag personnel, signs, cones, and lighting devices to insure safety.



WARNING: Someone could step into the trench by accident. Walking near the edge of the trench could cause collapse of the trench wall and possibly cause someone to fall onto the moving chain. Contact with the digging chain or auger while in operation will cause serious injury or even death.

Never allow anybody to ride on the trencher.

SAFETY INSTRUCTIONS OVERVIEW (continued)

Never lift trencher over any person at any time.



WARNING: If trencher should fall it would crush anybody under it. The trencher is very heavy. DO NOT attempt to manually lift it.

We recommend having a fire extinguisher suitable for petrol fires in the operating area.

Attachments can change the center of mass and machine operations. Use only Barreto attachments.

912 TRENCHER OPERATING INSTRUCTIONS

READ SAFETY INSTRUCTIONS BEFORE OPERATING!

Be sure that the engine oil, fuel and hydraulic oil are at proper levels before starting the engine.

STUDY AND UNDERSTAND CONTROLS BEFORE BEGINNING OPERATION.

1. **FREE WHEELING HUBS:** To engage either hub, turn the lock pin handle in (clockwise). This allows the spring-loaded pin to engage. Repeat for the other wheel. Push the trencher a bit if necessary until each pin finds a hole to drop into. The hubs are now locked. Disengaging one hub makes it much easier to turn the trencher when transporting under power.
2. **ENGINE IGNITION:** Must be in ON position to start the engine. Move to OFF position to stop the engine.
3. **ENGINE THROTTLE:** Controls engine speed. Operate at full throttle.
4. **CLUTCH LEVER:** Squeeze to activate the Wheel Drive and Dig Chain. All motion stops when the lever is released. It is located on the left handlebar.
5. **WHEEL DRIVE CONTROL:** Controls travel direction and speed. Very slow speed is required for trenching in most conditions. Begin trenching with the wheel control in neutral. Then adjust the reverse speed when trenching. NOTE: Be sure operator understands that the machine moves BACK when trenching, not forward.
6. **DIG CHAIN ON/OFF CONTROL:** To trench, hold the lever in the ON position while clutch lever is activated. The ON/OFF lever will stay in position as long as the clutch lever is held. This automatically will activate the CHAIN FORWARD/REVERSE LEVER to the FORWARD position.
7. **CHAIN FORWARD/REVERSE LEVER;** Use this lever to reverse chain to help clear debris from the chain. The clutch lever must be released to put the chain lever in reverse.
8. **DIGGING BOOM CONTROL:** Pull to raise the digging boom and push to lower the boom. During normal operation you will hear a relief valve working.

912 TRENCHER OPERATING INSTRUCTIONS (continued)

GETTING STARTED:

1. Start and warm up engine.
2. Put the Wheel Drive Control in neutral.
3. One wheel hub may be disengaged (free wheeling) for easier steering before driving machine to work location.
4. Squeeze the clutch lever and change the Wheel Direction Control to desired speed and direction.
5. Adjust the wheel speed and navigate the trencher to the starting position. The trencher is designed to dig toward the operator (with the Wheel Drive Control in reverse). With this in mind, position the machine to start the trench.

COLD WEATHER OPERATIONS: Before operating in cold weather, refer to the Engine Owner's Manual for recommended engine oil. Do not spray starting fluid into the air cleaner as engine damage could result. If the machine is operated at temperatures below +32°F (0°C) then changing the hydraulic fluid to ISO 46 is recommended. If you do not want to change the hydraulic fluid but want to operate the machine at temperatures below +32°F (0°C), then do the following:

- Warm up engine at a low speed.
 - Gradually increase engine speed, allowing **30 minutes for the hydraulic fluid to warm up**. Reduce the engine speed if the hydraulic pump whines. Pump noise may indicate a lack of hydraulic fluid flow that could damage the pump.
- For frequent starts below 18°F consult your Barreto Manufacturing dealer.

TRENCHING PROCEDURE:

1. Put the Wheel Drive Direction Control in neutral
2. Be sure both hubs are engaged.
3. Have engine at full throttle (forward).
4. Hold the Dig Chain On/Off Control in On position.
5. Squeeze the clutch lever.
6. Slowly lower the digging boom until the desired trench depth is achieved.
7. Put the Wheel Drive Control in reverse. Start at slow speed.
8. Adjust the wheel speed until a workable speed is reached. Use a very slow speed for trenching and adjust for soil conditions as necessary. If objects such as rocks or roots jam in the chain, release the clutch lever, and then reverse the chain to dislodge the debris. If necessary move the trencher forward a few inches and trench the area again.

TRENCHING TIPS

THE PLUNGE CUT:

If the boom bounces when lowering it, use a more gradual "boom down" action. A little ground travel toward the operator during the plunge cut may help reduce bounce. Adjust the boom lowering speed for soil conditions as necessary.

Do not overload engine. If the engine lugs down or the digging chain slows down, raise the boom until speed increases, then continue lowering the boom slowly.

Do not attempt to force the boom down faster than the digging chain can remove the material!

OPERATOR PREPARATION

Each operator must:

- Become familiar with the controls and operation of the trencher, preferably under the supervision of an experienced operator.
- Be at least 18 yrs. of age and be mentally and physically capable of operating the trencher safely.
- Have studied the SAFETY AND OPERATING INSTRUCTIONS in this manual.

PERSONAL PROTECTION: For safety, trencher operator should wear personal protection equipment. Keep observers at a safe distance.

Wear safety eye goggles and a hard hat while operating or observing!



WARNING: The dig chain may throw stones and debris.

Wear safety boots and gloves. Wear close-fitting clothing. Contain long hair. Do not wear jewelry. Wear reflective clothing if working near traffic.

Wear adequate hearing (ear) protection while operating or observing.



WARNING: Exposure to loud noise is cumulative and may permanently damage your hearing.



SHUT DOWN PROCEDURE

1. Always leave trencher parked on a level surface.



WARNING: Do not park on incline. Move the trencher to a level surface.

2. Unless loaded on a trailer, lower the boom to the ground.
3. Reduce the ENGINE THROTTLE to idle.
4. Move the IGNITION SWITCH to the OFF position to stop the engine.
5. **CLOSE THE FUEL SHUTOFF VALVE.** Failure to close this valve could cause fuel to leak down into the cylinder & crankcase. Damage resulting from this **WOULD NOT** be covered by your engine warranty!



Shut off engine and allow it to cool before refueling.



WARNING: Fuel fumes can catch fire or explode. Do not smoke or allow flames or sparks in the area.

Do not touch the engine, muffler, or any of the hydraulic components until cool.



WARNING: Muffler and engine get hot enough to cause serious burns. For the safety of yourself and others, allow enough time for the engine, muffler, and the hydraulic fluid to cool completely before performing any cleaning or maintenance.

GROUND TRANSPORT OF THE TRENCHER

Raise the digging chain boom.



WARNING: Contact with the dig chain or auger while in operation will cause serious injury or even death. The teeth of the dig chain are sharp. Avoid contact even when the chain is not moving.

Use the Wheel Drive Control to control travel direction. The Wheel Drive Engage Lever must be pulled and held to move the trencher.

- Pushing the Wheel Drive Control forward causes the machine to move forward.
- Pulling the Wheel Drive Control back causes the machine to move backward.
- If you are not experienced operating this trencher, a slow ground speed is recommended for your safety. Use half throttle for slower transport speed.



Keep away from tires to avoid getting crushed.

WARNING: Getting run over by the trencher will cause injury.

Never allow anybody to ride on the trencher.

Never make sudden changes in speed or direction.

Use extra caution on soft or uneven ground.

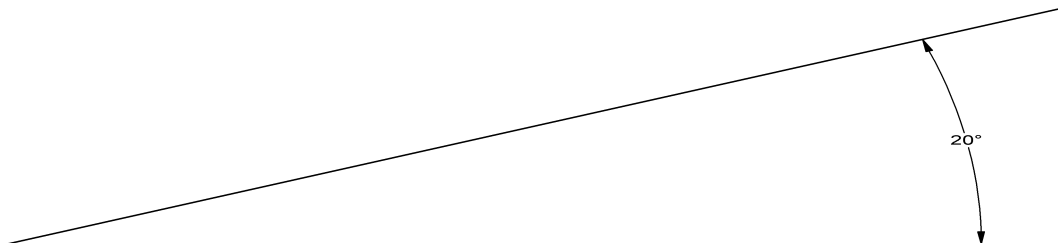
Avoid operating adjacent to drop-offs or embankments.

Avoid inclines if at all possible. Never use on any incline exceeding the angles shown below.



WARNING: Navigating on any incline increases the danger of the trencher losing traction or rolling over, especially if the surface is wet. If you lose control get out of the way immediately to avoid personal injury. Navigation on inclines should be especially slow and turns very gradual.

A 20° maximum incline is allowed. Honda engines have an Oil Alert system that will automatically stop the engine if tipped more than 20°.



DETERMINE LOCATION OF UNDERGROUND UTILITIES

OSHA CFR 29 1926.651 requires that the estimated location of underground utilities be determined before beginning excavation or an underground drilling operation. When the actual excavation or bore approaches an estimated utility location, the exact location of the underground installation must be determined by a safe, acceptable and dependable method. If any utility cannot be precisely located, the appropriate utility company must shut it off.

Call before you dig. If you do not call, you may cause an accident; suffer injuries or death; cause interruption of services; damage the environment; and/or incur project delays. Expect to be held liable for any damages caused, if you fail to call.



DANGER: Buried electric cables or gas lines can cause serious injury or death if struck with dig chain. Always determine location of utilities before trenching.



WARNING: Fiber optic cables convey laser light that can injure your eyesight.

CALL 1-888-258-0808 TO LOCATE UTILITIES BEFORE TRENCHING (US. OR CANADA). This free service will provide a “One-Call” number for the geographic area that you select. Before you start any digging project, be sure to call the local One-Call system in your area and any utility company that does not subscribe to the One-Call system. The One-Call representative will notify participating utility companies of your proposed digging activities. Utilities will then mark their underground facilities by using the following international marking codes:

Red	Electric
Yellow	Gas, oil, or petroleum
Orange	Communication, telephone, television
Blue	Potable water
Green/brown	Sewer
White	Proposed excavation
Pink	Surveying

For areas not represented by One-Call Systems International, contact the appropriate utility companies to locate and mark the underground installations. Do not rely on visual evidence of underground utilities such as manhole covers or electrical drop boxes...**CALL!**

WORK SITE ASSESSMENT

Examine the work area for any conditions or obstructions that may inhibit trenching or create a safety hazard for the operator or others. Use the information in this manual combined with good judgment to identify any hazards to avoid.

In addition to calling to DETERMINE LOCATION OF UNDERGROUND UTILITIES (see previous section for details), the operator and/or job foreman should visually inspect the work site. Look for electrical drop boxes, notices of underground placements, manhole covers, recent trenching activity, any evidence of possible underground placements, banks, overhangs, drop-offs, rocks, tree limbs, wire, uneven terrain, any existing trenches or holes and toxic ground conditions.



Only operate trencher outdoors and avoid breathing engine exhaust and fumes.

WARNING: Engine exhaust contains carbon monoxide gas that is toxic. Breathing it can cause unconsciousness and death.



Do not operate trencher near any source of flammable dust or vapors.

WARNING: Sparks from the engine exhaust can cause an explosion or fire in a flammable or explosive atmosphere. Fuel fumes can catch fire or explode.

Allow adequate side and overhead clearances between trencher and any objects such as buildings, fences, and trees.



WARNING: If the digging chain contacts an object, the digging chain can climb upward quickly and tip the trencher toward the operator. Serious injury or death will result by operator contact with the moving chain or auger. The digging chain can suddenly drag the machine forward if the trencher is forced too quickly into the ground or catches on a buried object.

Adequate lighting is required, daylight or artificial, for safe operation of the trencher.

Keep others away. If the job site is near a road or pedestrian path, warn and divert both motorized traffic and pedestrians. As appropriate, erect barriers, use traffic flag personnel, signs, cones, and lighting devices to insure safety.



WARNING: Someone could step into the trench by accident. Walking near the edge of the trench could cause collapse of the trench wall and possibly cause someone to fall onto the moving chain. Contact with the digging chain or auger while in operation will cause serious injury or even death.

MACHINE FUNCTION CHECK: If the operator releases the WHEEL DRIVE or DIG CHAIN LEVERS, these functions should stop. This is intended for your safety and must be maintained in good functional condition. Contact your dealer or the factory if anything on the trencher does not function properly.

CONTACT WITH UNDERGROUND UTILITIES

After LOCATING UNDERGROUND UTILITIES and performing the WORK SITE ASSESSMENT, accidental dig chain contact with a buried utility might still occur. If it does, stop digging and call 911 for help.

If you cut a wire or cable, assume that you do not know what kind it is. It may be electrical or any one of several communication lines: telephone, television, or fiber optic. In any case, do not touch it or even look at the ends of it. Stop digging and call 911 for help. Do not dig any more until the appropriate utility company has assessed the situation, taken appropriate action, and informed you that it is safe to proceed.

If you strike a pipe, it could be gas, oil, petroleum, water or sewer. In any case, stop digging, shut off the engine, and evacuate the area immediately. **Call 911 for help.**

Electrical wires or cables: If you think that you may have severed electrical wires, stop digging and call 911 for help. Keep yourself and other people away from the area.



DANGER: An electric shock could kill you. Assume that any severed wire or cable is HOT with voltage and do not touch it!

Gas lines: If you think that you may have struck a gas line, shut off the engine and evacuate the area immediately. Call 911 for help.



DANGER: A gas explosion could kill you. Sparks will likely occur from the dig chain scraping the metal pipe. If gas leaks out an explosion could easily occur.

Fiber optic cables: If you think that you may have severed a fiber optic cable, do not touch or even look at the ends of it.



WARNING: Fiber optic cables convey laser light that can injure your eyesight. Call 911 for help.

THE
BARRETO
MODEL 912HM
HYDRAULIC TRENCHER
EXPLODED VIEWS WITH PART NUMBERS

CONGRATULATIONS!

You are now the proud owner of a BARRETO trencher. The following pages have detailed views of your trencher, along with corresponding part numbers. If you have any questions or need any replacement parts in the future, please contact us at your convenience. Our toll-free phone number, fax and email are listed below and parts may be ordered through any of these methods.

Thank you for your patronage and confidence in BARRETO equipment.

Barreto Manufacturing, Inc.
Innovative Equipment Engineered to Last
66498 Highway 203
La Grande, OR 97850
1-800-525-7348
1-541-963-6755 Fax
E-Mail: info@barretomfg.com
Web Site: <http://www.barretomfg.com>

Machine Identification Record

BARRETO Customer number _____

Machine model number _____

Machine serial number _____

Engine manufacturer _____

Engine model number _____

Engine serial number _____

ITEM NO.	QTY.	PART NO.	DESCRIPTION
1	1	100268	TRANSMISSION ASSEMBLY
2	1	100256 R1	FREE WHEELING HUB & WHEEL, SET RH & LH
3	1	100267	LID ASSEMBLY
4	1	100249	MANIFOLD ASSEMBLY
5	1	10232	BODY
6	2	10174	AXLE BEARING HOUSING
7	1	10238	TRANSMISSION BRACE, REAR
8	1	10240	TRANSMISSION BRACET, FRONT
9	1	103014TR	AXLE COUPLER
10	1	10231	AXLE, LEFT
11	4	05606	SNAP RING, 1-1/8" EXTERNAL
12	2	05034	SNAP RING, 1-3/16 EXT, SH-118
13	4	03012	SEAL, AXLE
14	2	03280	BALL BEARING, SKF 6206
15	1	103503	SIGHT GAUGE
16	1	10361	FITTING, 6409-8 PLUG
17	2	05018	KEY, 1/4 X 1/4 X 1-1/4 HARDENED
18	2	05199	KEY, 1/4 X 1/4 X 2-1/2 HARDENED
19	1	103040-57	DECAL, "HYDRAULIC OIL LEVEL"
20	1	104440-08	DECAL:912 S/N
21	2	03520	MAGNET
22	6	10623	O-RING, 2-010, 3/8 OD X 1/16 SECTION
23	2	03923	O-RING, 2-142, 2-9/16 OD X 3/32 SECTION
24	2	10602	O-RING, 2-239, 3-7/8 OD X 1/8 SECTION
25	2	05044	GREASE ZERK, 1/4-28 UNF
26	1	103008	THRUST WASHER, 1.136 X 1.784 X .032 HARD
27	8	05140	WHIZ-LOCK 5/16 - 18 X 3/4
28	4	05068	WASHER, 5/16 SAE ZINC
29	6	12113	WHIZ-LOCK 1/4 - 20 X 1-1/2

UPDATED 10/4/16

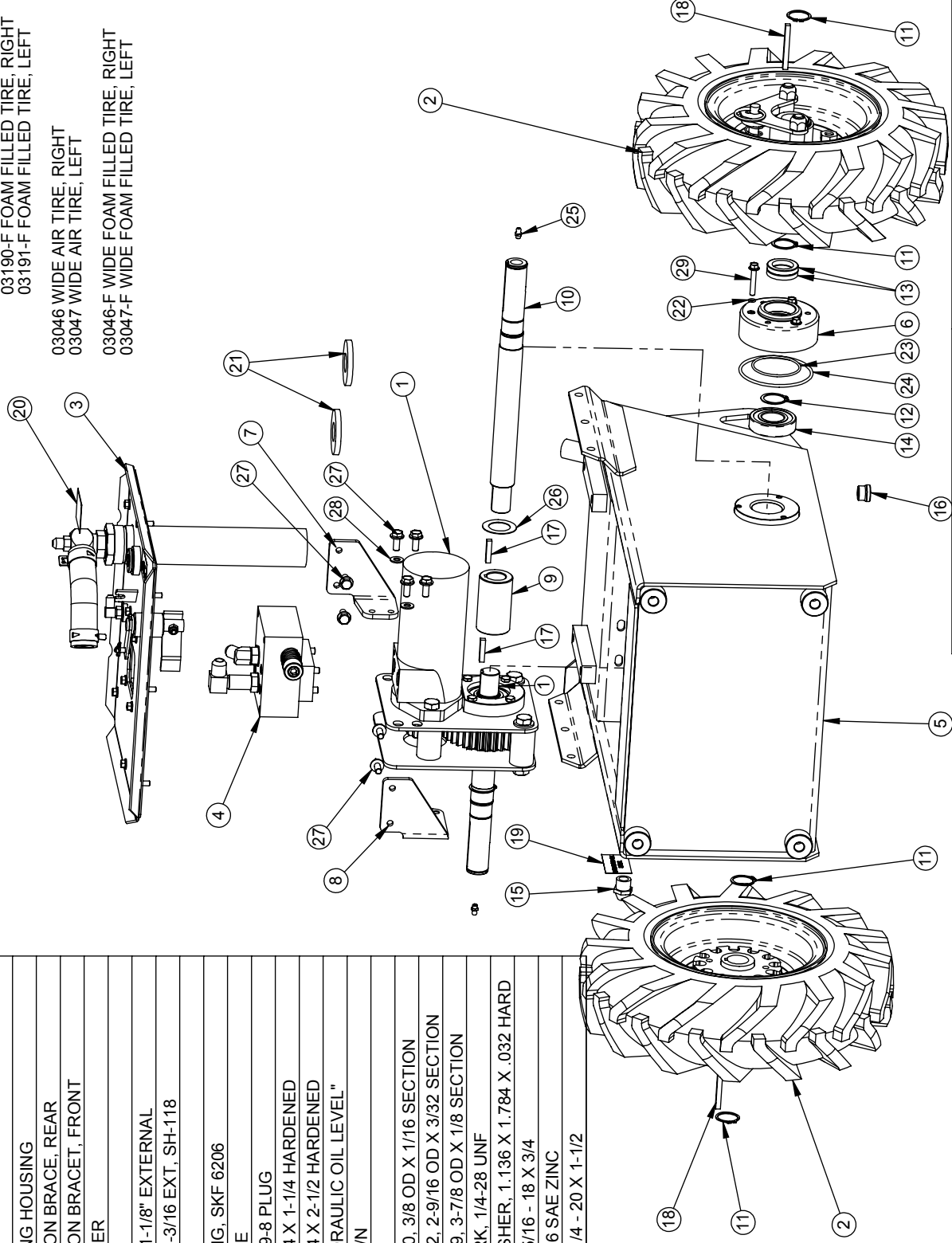
TIRE OPTIONS:

00256 R1 AIR TIRES & HUBS KIT (SEE DRAWING)
03190-FW AIR TIRE, RIGHT
03191-FW AIR TIRE, LEFT

00256 R1-F FOAM FILLED TIRES & HUBS KIT
03190-F FOAM FILLED TIRE, RIGHT
03191-F FOAM FILLED TIRE, LEFT

03046 WIDE AIR TIRE, RIGHT
03047 WIDE AIR TIRE, LEFT

03046-F WIDE FOAM FILLED TIRE, RIGHT
03047-F WIDE FOAM FILLED TIRE, LEFT



BARRETO

TITLE: BODY ASSEMBLY

PRODUCT LINE: TRENCHER 912

DATE: 3/11/04

SCALE: 1:8

DWG# 00247

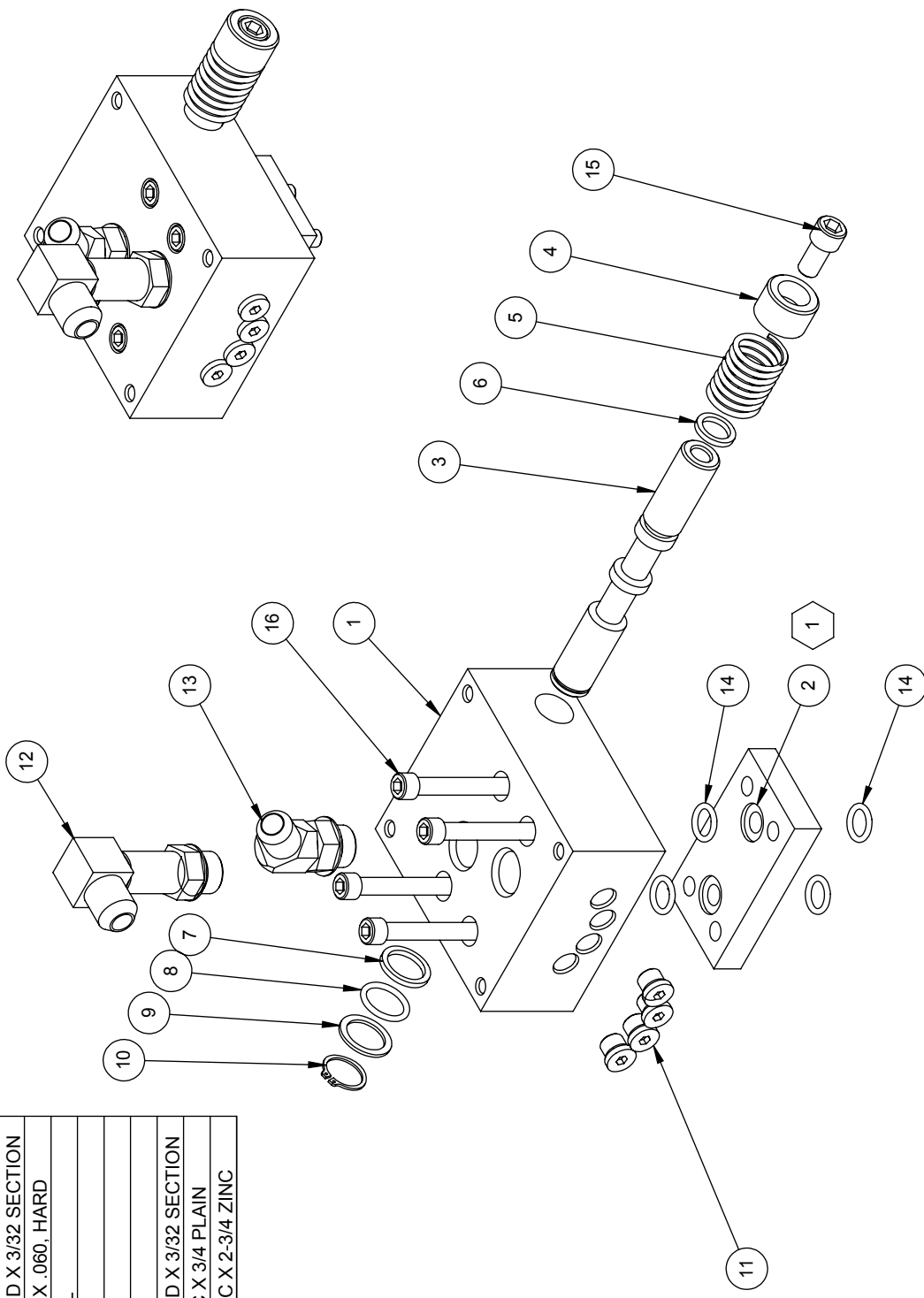
SHEET 1 OF 1

REF	QTY.	PART NO.	DESCRIPTION
1	1	02200	MANIFOLD, WHEEL MOTOR
2	1	02203W	MANIFOLD SPACER
3	1	02201	SPOOL, DRIVE DUMP
4	1	10236	SPOOL SPACER
5	1	03055	SPRING, VALVE SPOOL RETURN
6	1	10614	QUAD RING #4-113
7	1	10470	QUAD RING #4-116
8	1	03225	O-RING, 2-116N70, 15-16 OD X 3/32 SECTION
9	1	03200	THRUST WASHER, .75 X 1 X .060, HARD
10	1	05216	SNAP RING, 3/4 EXTERNAL
11	4	03300	FITTING, 6409-4 PLUG
12	1	04533	FITTING, 6801-8-8-LL
13	1	04210	FITTING, 6802-8-8
14	4	03226	O-RING, 2-112N70, 11/16 OD X 3/32 SECTION
15	1	10237	SH CAP SCREW, 3/8-16 NC X 3/4 PLAIN
16	4	05362	SH CAP SCREW, 5/16-18 NC X 2-3/4 ZINC

1

UNITS WITH A WHITE BRAND WHEEL DRIVE MOTOR
NEED MANIFOLD SPACER 02203W

UNITS WITH A CHAR-LYNN EATON BRAND WHEEL DRIVE MOTOR
NEED MANIFOLD SPACER 02203CT



BARRETO

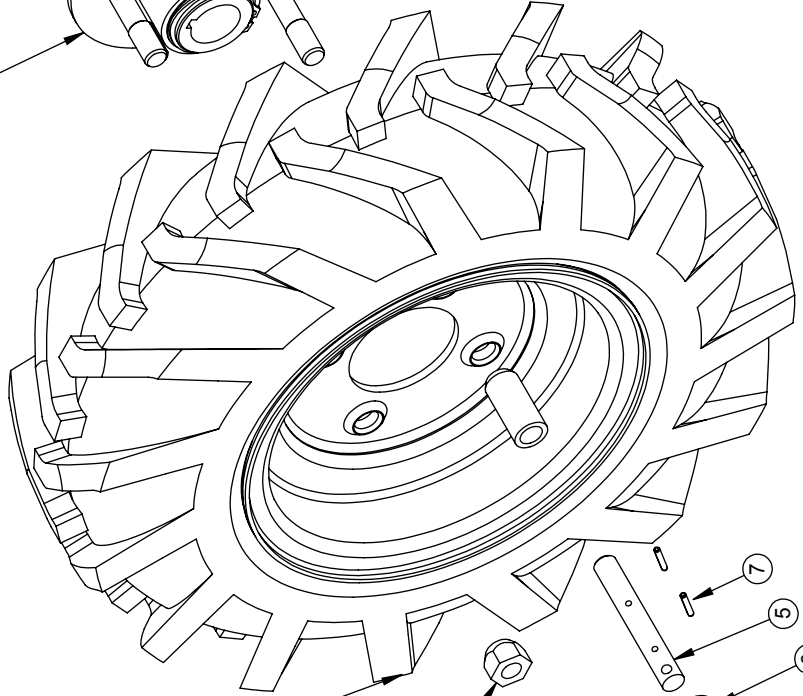
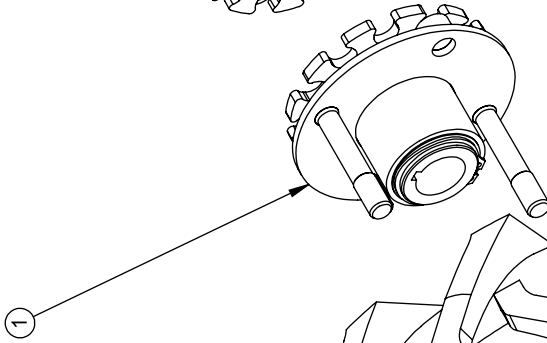
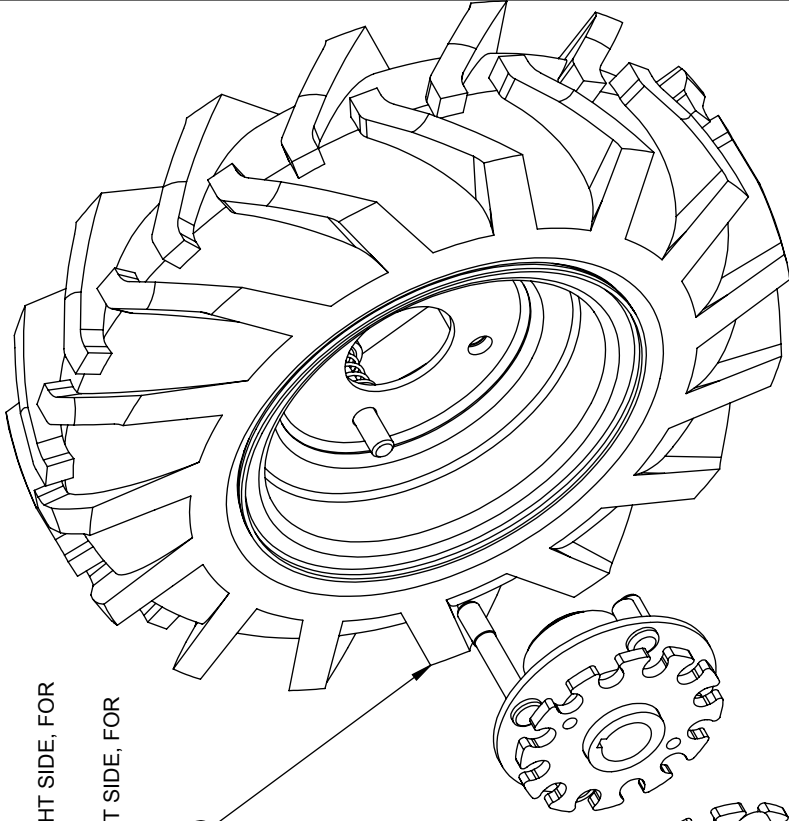
REF	QTY.	PART NO.	DESCRIPTION
1	2	02269-HUB	WHEEL HUB ASSY, 1-1/8" BORE
2	1	03190-FW	TIRE & RIM, 16" X 4", LEFT HAND
3	1	03191-FW	TIRE & RIM, 16" X 4", RIGHT HAND
4	6	05042	NUT, LUG, 1/2-20 NF
5	2	02068	PIN, FREE WHEELING
6	2	05102	WASHER, 1/2 SAE ZINC HARDENED
7	4	05548	ROLL PIN (SLOTTED SPRING), 1/8 X 3/4 ZINC
8	2	03352	SPRING, CENTURY 3385
9	4	02083	SPACER, WHEEL
10	2	01077	MOUNTING PLATE, PIN, FREE WHEELING
11	2	03550	SPLIT RING-27

- 1
- 2

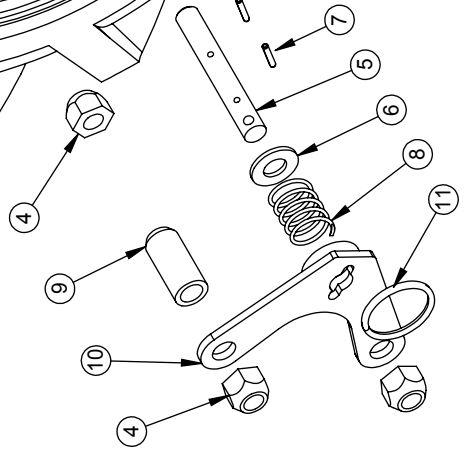
FOR TRENCHER, 03190-FW IS ON RIGHT SIDE, FOR TRENCHING IN REVERSE

FOR TRENCHER, 03191-FW IS ON LEFT SIDE, FOR TRENCHING IN REVERSE

- 2
- 3



- 1



NOTES:

1. RIM ALONE IS PART NO. 03712.
TIRE ALONE IS PART NO. 03193.
2. USAGE: 1 OF 00256 R1 PER 912, 916 & 918.

BARRETO

TITLE: FREE WHEELING HUBS
AND WHEELS

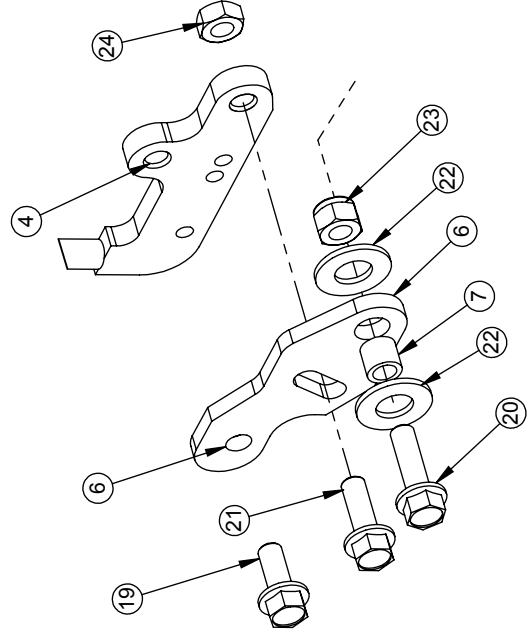
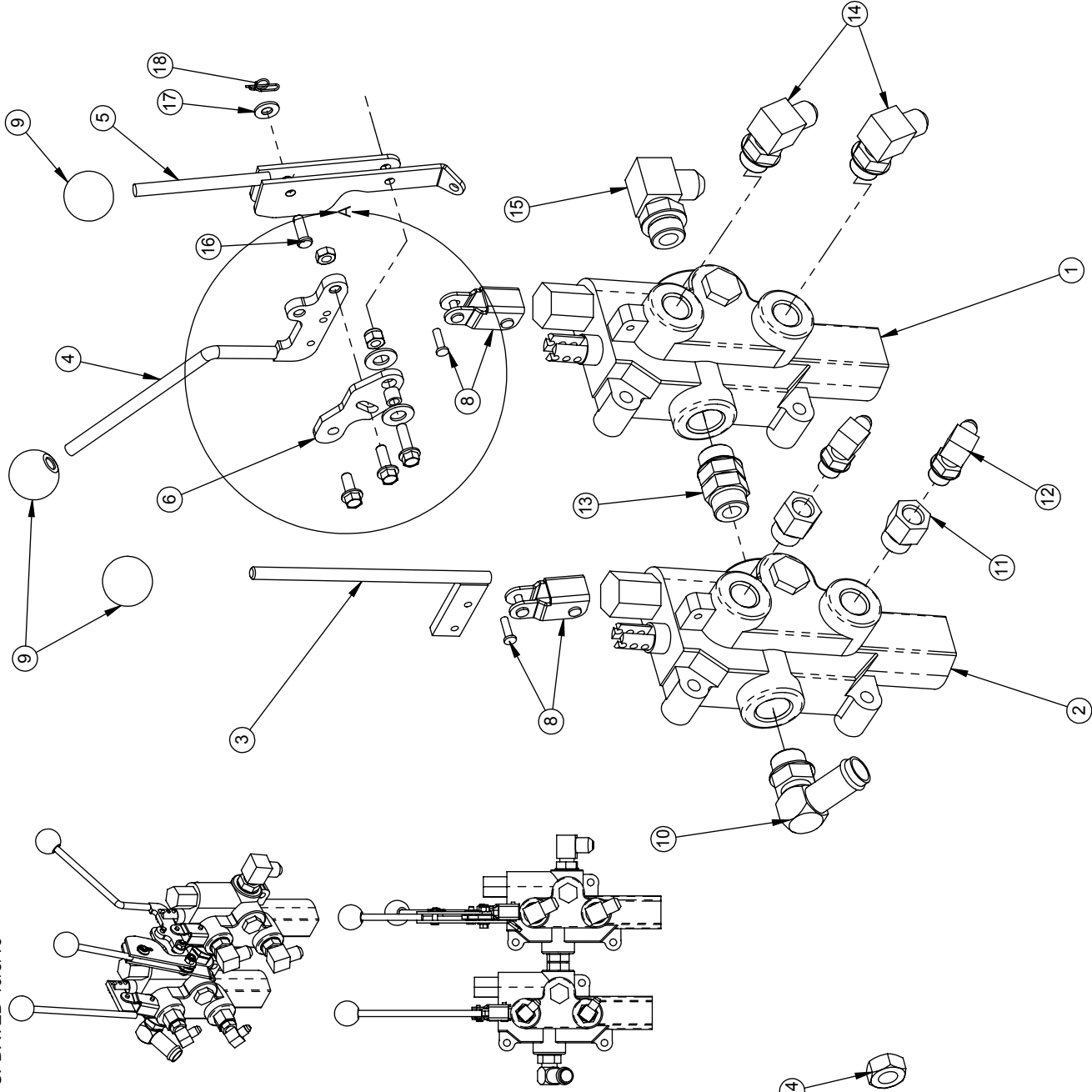
PRODUCT LINE: COMMON DATE: 7/16/07

SCALE: 1:4 DWG# 00256 R1

SHEET 1 OF 1

UPDATED 10/5/16

REF	QTY.	PART NO.	DESCRIPTION
1	1	04513-M	VALVE RD-2508-M4, 2200 psi
2	1	04512-M	VALVE RD-2508-T4, 500-650 PSI
3	1	10553	CYLINDER VALVE LEVER
4	1	10330	VALVE LEVER
5	1	10335	VALVE ENGAGE LEVER
6	1	10337	VALVE ROCKER
7	1	11743	SPACER
8	2	03509	BRACKET & PINS, COMES WITH VALVE
9	3	03026	KNOB, 5/16-NC
10	1	04523	FITTING, 4601-12-10
11	2	04529	FITTING, 6410-8-6
12	2	04527-01	FITTING, 6801-4-6
13	1	04521	FITTING, 6407-10-10
14	2	04554	FITTING, 6801-8-8
15	1	04211	FITTING, 6801-8-10
16	1	10345	CLEVIS PIN, 1/4 X 3/4 ZINC
17	1	05081	WASHER, 1/4 SAE ZINC
18	1	05038	RUE RING COTTER #8
19	1	05069	WHIZ-LOCK 1/4 - 20 X 5/8
20	1	05535	WHIZ-LOCK 1/4 - 20 X 7/8
21	1	05049	WHIZ-LOCK 1/4 - 20 X 3/4
22	2	05101	WASHER, 3/8 SAE ZINC
23	1	05096	NUT, NYLOCK, 1/4-20 NC ZINC
24	1	10773	NUT, GRIPCO, 1/4-20 NC G5 ZINC



DETAIL A
SCALE 1 : 2

BARRETO

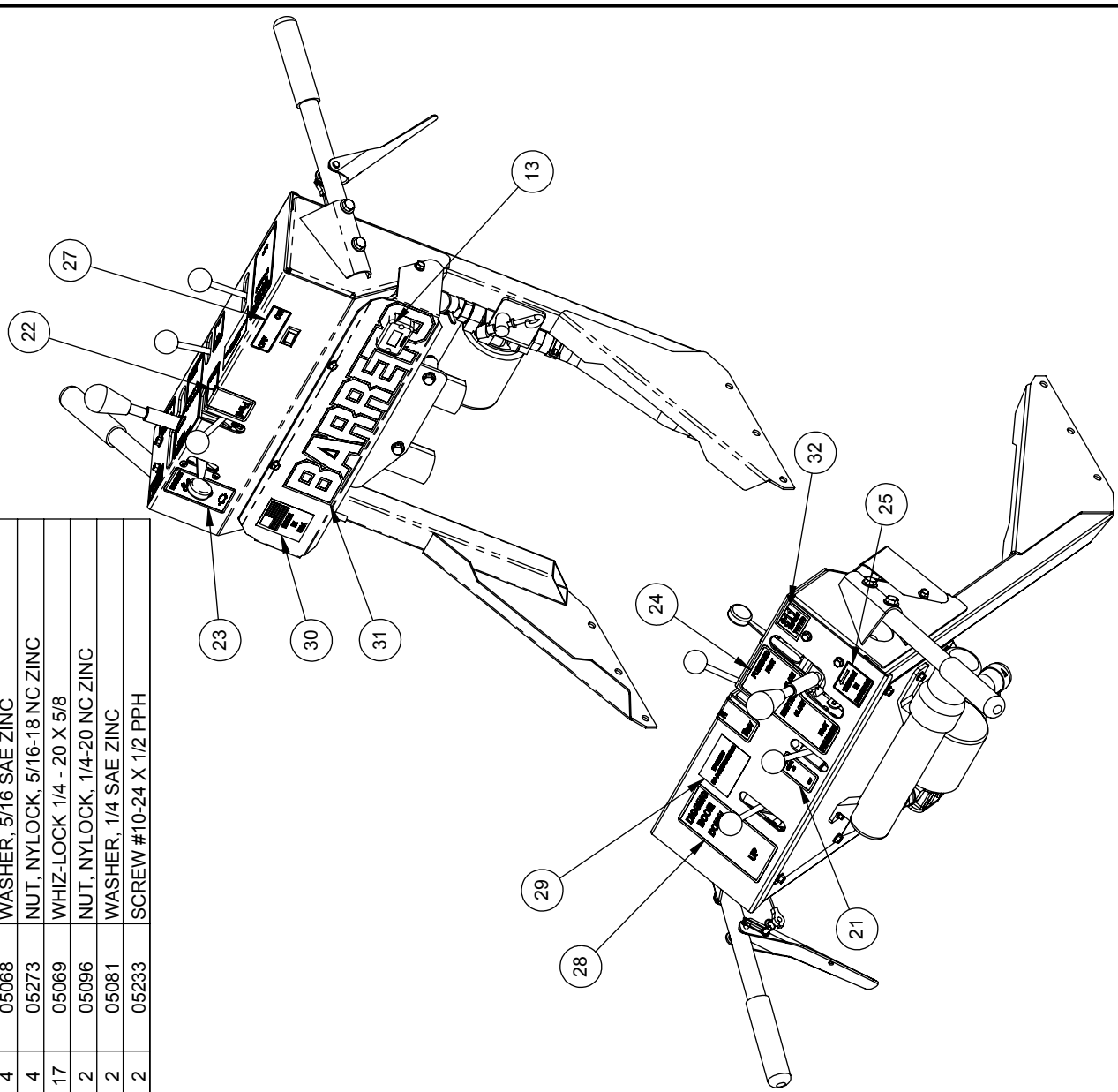
TITLE: CONTROL VALVE ASSEMBLY

PRODUCT LINE: TRENCHEUR 912 DATE: 8/24/04

SCALE: 1:4 DWG# 00259 SHEET 1 OF 1

REF	QTY.	PART NO.	DESCRIPTION	REF	QTY.	PART NO.	DESCRIPTION
1	1	00259	CONTROL VALVE ASSEMBLY	49	4	05054	HH CAP SCREW, 5/16-18 NC X 1-3/4 G5 ZINC
2	1	00273	SPEED LEVER ASSEMBLY	50	4	05068	WASHER, 5/16 SAE ZINC
3	1	01503K	CLUTCH LEVER KIT	51	4	05273	NUT, NYLOCK, 5/16-18 NC ZINC
4	1	10327	CONTROL POD	52	17	05069	WHIZ-LOCK 1/4 - 20 X 5/8
5	1	10534	HOSE COVER	53	2	05096	NUT, NYLOCK, 1/4-20 NC ZINC
6	1	01402-R	HANDLE BAR, RH	54	2	05081	WASHER, 1/4 SAE ZINC
7	1	01402-L	HANDLEBAR, LEFT	55	2	05233	SCREW #10-24 X 1/2 PPH
8	2	01403	HANDLE BAR SLUG				
9	1	10331	VALVE LINKAGE				
10	1	10332	LINK PIVOT				
11	1	10346	LINKAGE PIVOT				
12	1	10549	BACK COVER				
13	1	03009-R1	HOSE COVER				
14	1	12090	INSTRUCTION CANISTER				
15	1	03505	CABLE, 4-1/2"				
16	1	06423	STARTER GROMMET				
17	1	10548	SPRING LEE LE-055E-6MW				
18	1	03515-T	THROTTLE CABLE				
19	2	03501	BUSHING, IGUS MFI-0810-08				
20	1	03514	CABLE, 40"				
21	1	04440-04	DECAL; DIG CHAIN ON/OFF				
22	1	04430-05	DECAL; DIG CHAIN FWD-N-REV				
23	1	04440-05	DECAL, THROTTLE CONTROL				
24	1	04440-06	DECAL, "TRAVEL F-N-R"				
25	1	04440-07	DECAL, "REV/TRENCH SYMBOL"				
26	2	03032	HANDLE BAR GRIPS (SOLD IN PAIRS)				
27	1	03341-07	DECAL, "IGNITION OFF/ON"				
28	1	03341-12	DECAL, "DIGGING BOOM, UP-DOWN"				
29	1	03341-24	DECAL, "WARNING - NO PARKING BRAKE"				
30	1	03040-01	DECAL, "MADE IN USA"				
31	1	03040-02	DECAL, "BARRETO", 3-1/2 X 11-1/4				
32	1	03345	DECAL, "CALL 811 BEFORE YOU DIG"				
33	1	04526-01	FITTING, 6801-6-4				
34	1	03951	FILTER, HYDRAULIC OIL, WITH BY-PASS				
35	1	04212-OR-U	FILTER HEAD, #12 O-RING, TAP RIGHT				
36	1	04217	FITTING, 4604-16-12				
37	1	10362	FITTING, 4603-12-12				
38	1	10367	HOSE, RETURN, 04298				
39	2	05225	CLAMP, 1" ID HOSE, CTB-35 ST				
40	1	10368	RETURN HOSE, 04294				
41	2	05008	CLAMP, 1" HOSE, CTB-29				
42	1	06420	ROCKER SWITCH, IGNITION OFF/ON				
43	1	03806	QUICK-SPLICE				
44	1	06421	GROUND WIRE, IGNITION SWITCH				
45	1	10603	IGNITION WIRE, 912				
46	2	05038	RUE RING COTTER #8				
47	4	05059	HH CAP SCREW, 3/8-16 NC X 1 G5 ZINC				
48	4	05101	WASHER, 3/8 SAE ZINC				

UPDATE 12/12/16



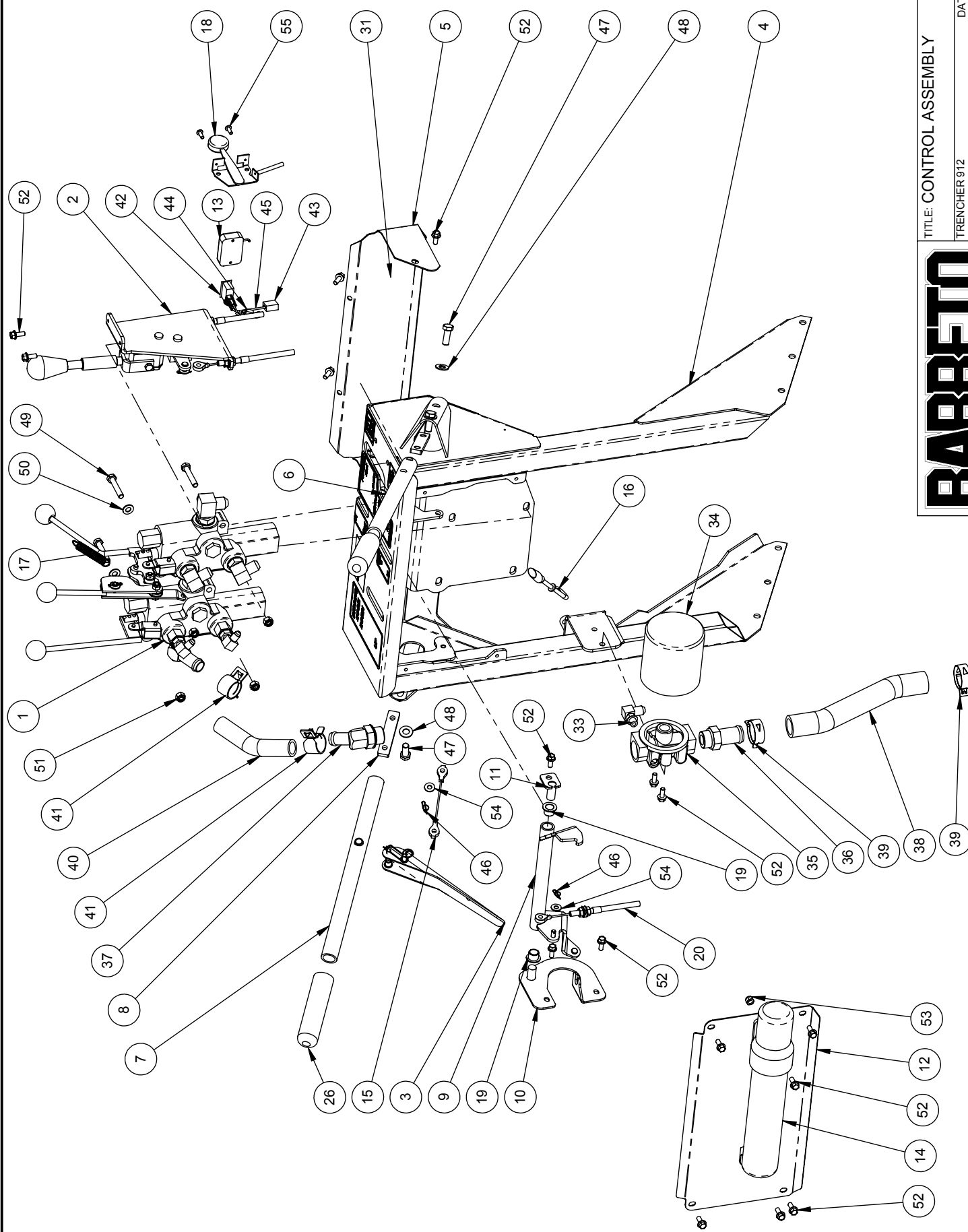
BARRETO

TITLE: CONTROL ASSEMBLY

PRODUCT LINE: TRENCHER 912 DATE: 3/19/04

SCALE: 1:9 DWG# 00260

SHEET 1 OF 2



BARRETO

TITLE: CONTROL ASSEMBLY

TRENCHER 912 DATE: 3/19/04

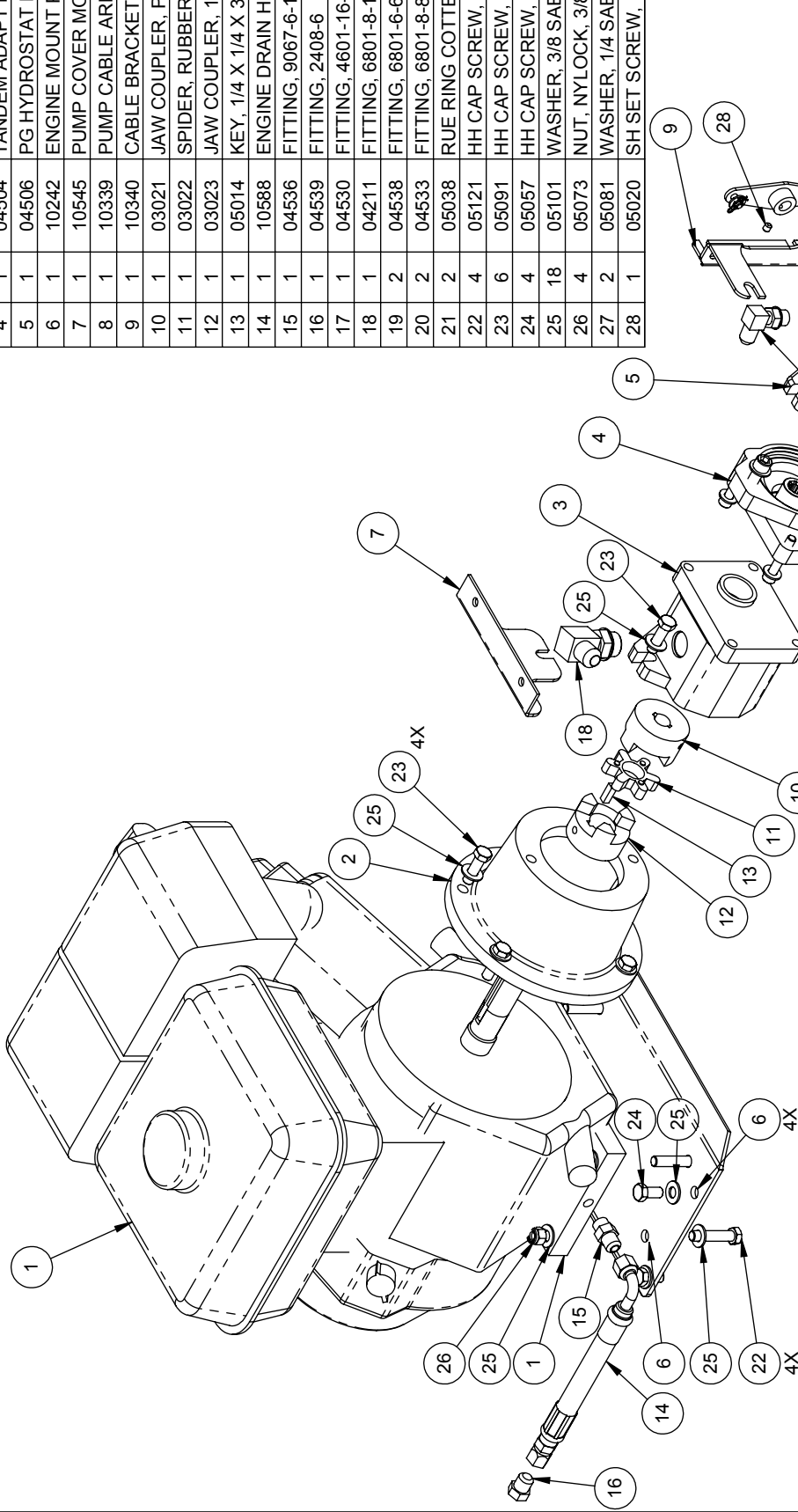
SCALE: 1:8 DWG# 00260

SHEET 2 OF 2

UPDATED: 10/4/16

ENGINE OPTIONS:
07006: HONDA GX270
07009: 9HP ROBIN SUBARU

NOTES:
04504 TANDEM ADAPT KIT INCLUDES
PLATE, COUPLER, O-RINGS, BOLTS, WASHERS
03021 & 03023 COUPLERS INCLUDE SET SCREW



REF	QTY.	PART NO.	DESCRIPTION
1	1	07006	ENGINE, 9 HP HONDA GX270
2	1	02016	PUMP ADAPTER
3	1	04507	PUMP SNP2-8.5-HSTAT
4	1	04504	TANDEM ADAPT KIT
5	1	04506	PG HYDROSTAT PUMP .63 CI
6	1	10242	ENGINE MOUNT PLATE
7	1	10545	PUMP COVER MOUNT
8	1	10339	PUMP CABLE ARM
9	1	10340	CABLE BRACKET
10	1	03021	JAW COUPLER, PUMP, 5/8" BORE
11	1	03022	SPIDER, RUBBER
12	1	03023	JAW COUPLER, 1" BORE L095
13	1	05014	KEY, 1/4 X 1/4 X 3/4
14	1	10588	ENGINE DRAIN HOSE
15	1	04536	FITTING, 9067-6-12METRIC
16	1	04539	FITTING, 2408-6
17	1	04530	FITTING, 4601-16-12
18	1	04211	FITTING, 6801-8-10
19	2	04538	FITTING, 6801-6-6
20	2	04533	FITTING, 6801-8-8-LL
21	2	05038	RUE RING COTTER #8
22	4	05121	HH CAP SCREW, 3/8-16 NC X 1-3/4 G5 ZINC
23	6	05091	HH CAP SCREW, 3/8-16 NC X 1-1/4 G5 ZINC
24	4	05057	HH CAP SCREW, 3/8-16 NC X 3/4 G5 ZINC
25	18	05101	WASHER, 3/8 SAE ZINC
26	4	05073	NUT, NYLOCK, 3/8-16 NC ZINC
27	2	05081	WASHER, 1/4 SAE ZINC
28	1	05020	SH SET SCREW, 1/4-20 NC X 1/4" CUP POINT

BARRETO

TITLE: ENGINE & PUMPS ASSEMBLY

PRODUCT LINE: TRENCHER 912 DATE: 3/17/04

SCALE: 1:6

DWG# 00261

SHEET 1 OF 1

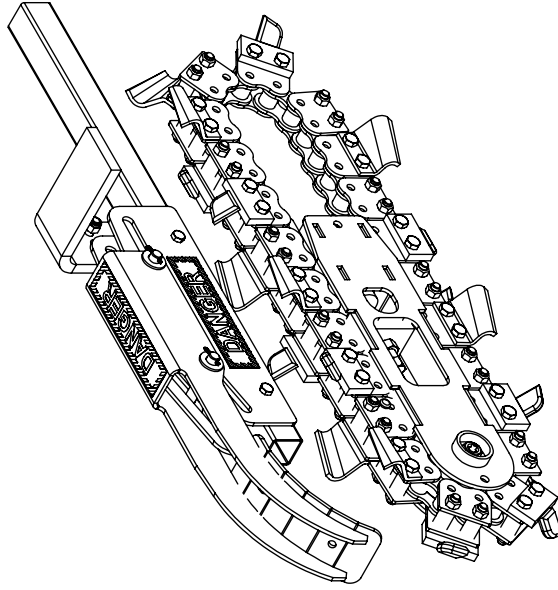
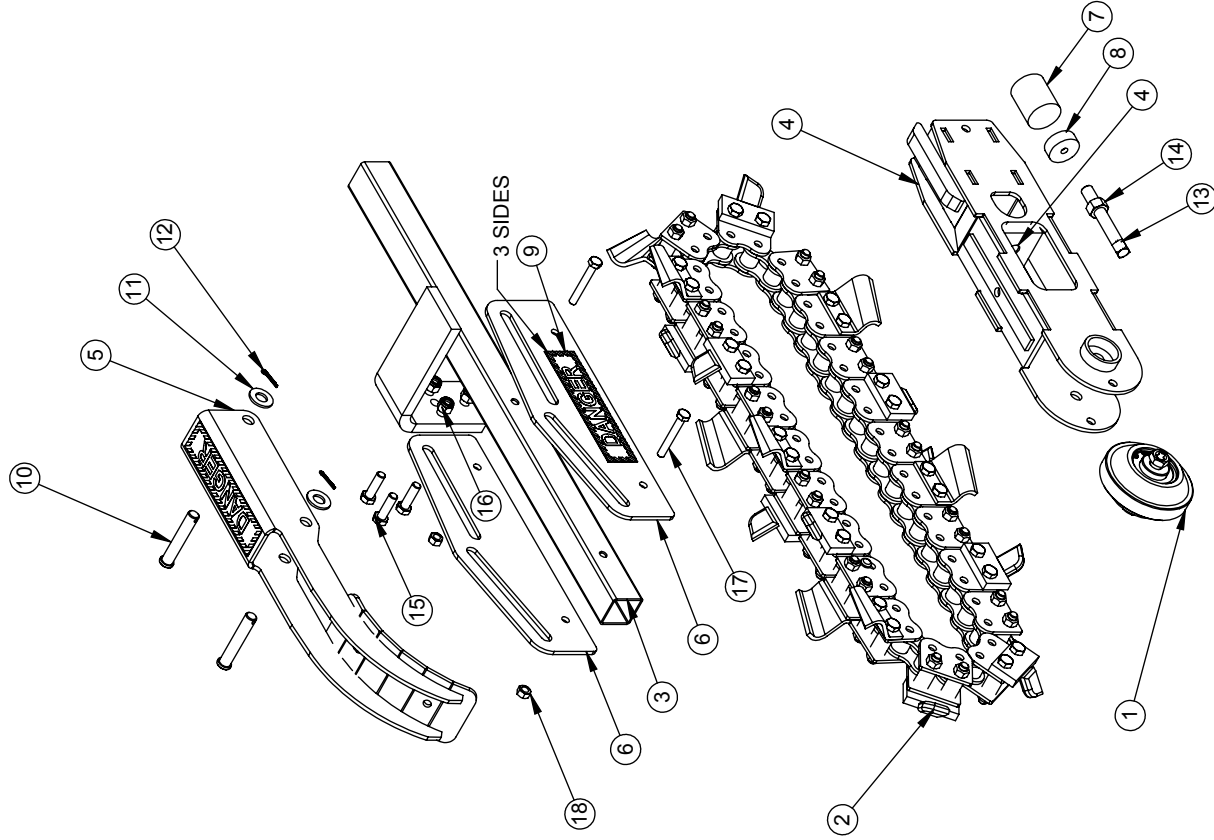
ITEM NO.	QTY.	PART NO.	DESCRIPTION
1	1	100265	ROLLER ASSEMBLY
2	1	DIG CHAIN	CHAIN OPTIONS
3	1	10325	BOOM GUARD 12"
4	1	10316	BOOM - 12"
5	1	10567	CRUMBER ARM
6	2	10564	CRUMBER MOUNT
7	1	10270	CUSHION, BOOM
8	1	10318	BOOM CUSHION WASHER
9	3	04440-02	DECAL: DANGER, BOOM GUARD
10	2	10586	CLEVIS PIN, 1/2 X 2-3/4 ZINC
11	2	05102	WASHER, 1/2 SAE ZINC HARDENED
12	2	05222	COTTER PIN 1/8 X 3/4
13	1	10319	CHAIN TENSION SCREW
14	1	10326	NUT, 1/2-13 NC G5 ZINC
15	3	05091	HH CAP SCREW, 3/8-16 NC X 1-1/4 G5 ZINC
16	3	05073	NUT, NYLOCK, 3/8-16 NC ZINC
17	2	05089	HH CAP SCREW, 5/16-24 NF X 2-1/4 G5 ZINC
18	2	10462	NUT, GRIPCO, 5/16-24 NF G5 ZINC

FOR OUR MOST POPULAR CHAIN OPTIONS SEE THE LAST PAGE OF THIS MANUAL
OR CALL US AT 1-800-525-7348 FOR ADDITIONAL OPTIONS.

DIG DEPTH:

12" BOOM GUARD 10325
18" BOOM GUARD 10650
24" BOOM GUARD 10866

12" BOOM 10316
18" BOOM 10649
24" BOOM 10865



BARRETO

TITLE: BOOM GUARD & CRUMBER

PRODUCT LINE:912

SCALE: 1:8

SHEET 1 OF 1

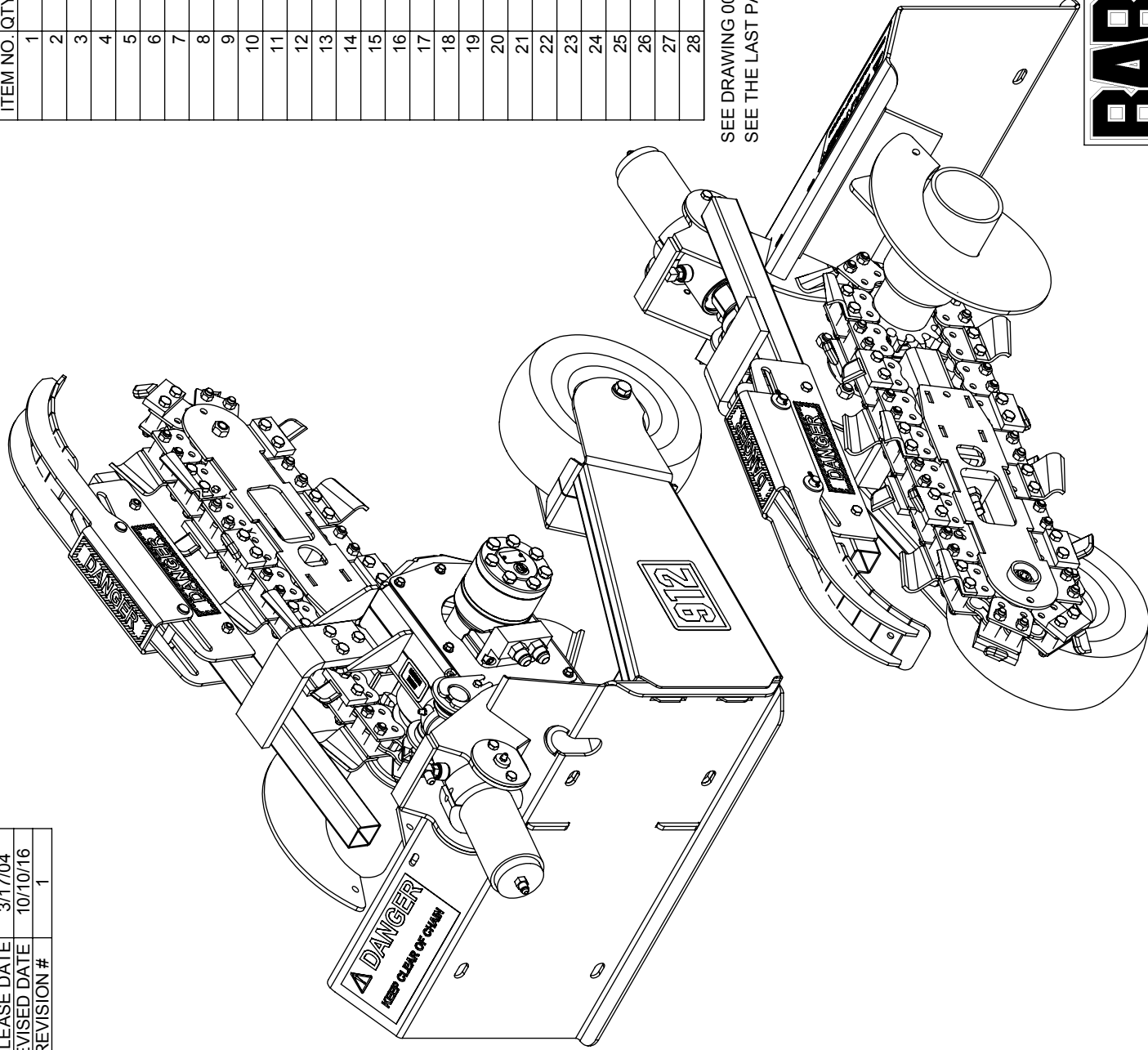
DWG# 00262-BOOM

RELEASE DATE	10/6/16
REVISED DATE	NEW
REVISION #	0

RELEASE DATE	3/17/04
REVISED DATE	10/10/16
REVISION #	1

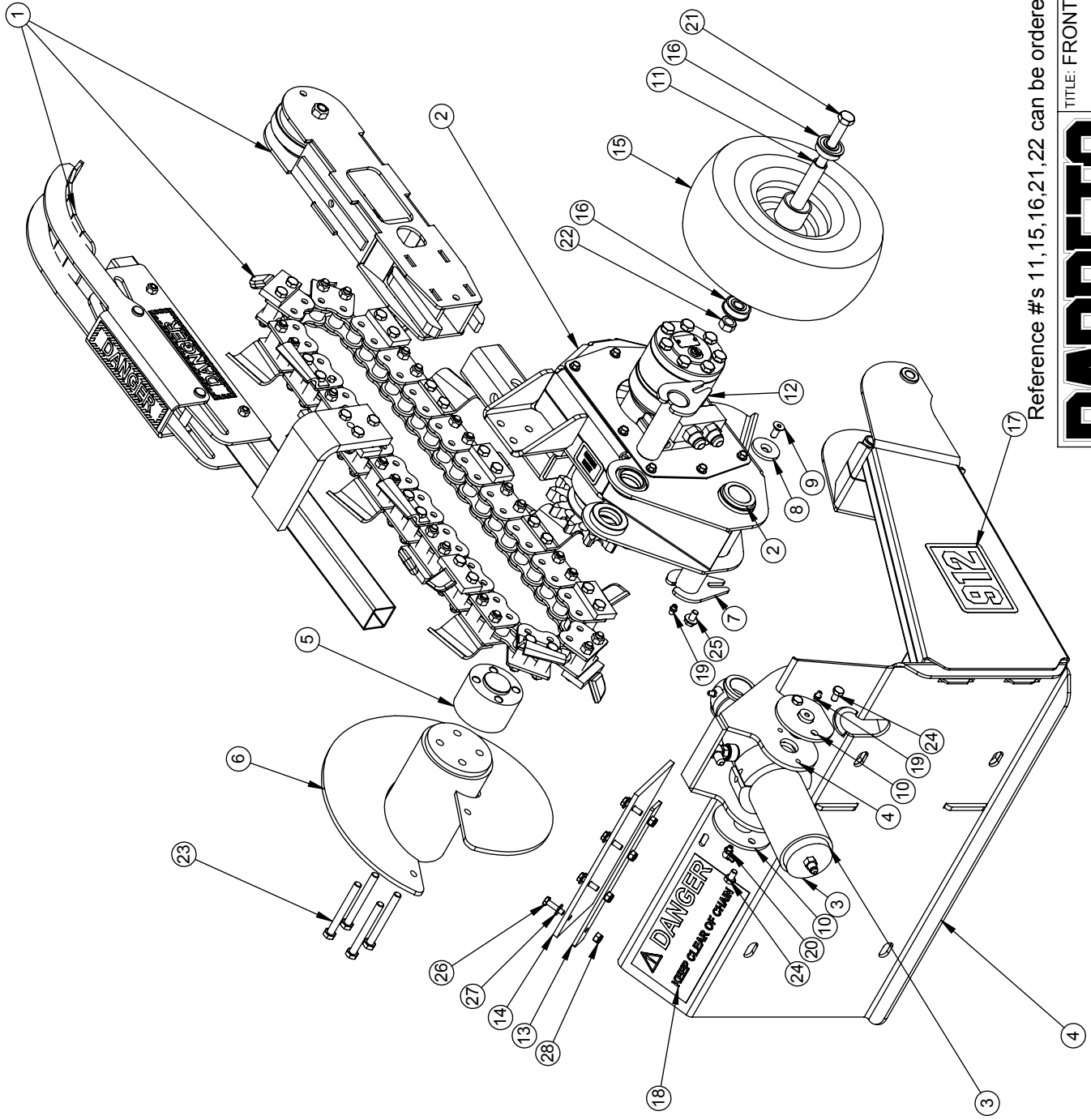
ITEM NO.	QTY.	PART NO.	DESCRIPTION
1	1	100262-BOOM	BOOM GUARD & CRUMBER
2	1	100264	MOTOR HOUSING ASSEMBLY
3	1	100271	CYLINDER ASSEMBLY
4	1	10273	FRONT END MOUNT
5	1	10286-W	AUGER SPACER, WIDE
6	1	10287	AUGER
7	1	10280	PIVOT PIN
8	1	10626	PIVOT PIN WASHER
9	1	10627	C-SINK HD CAP SCR .31 X .75 NC Z
10	2	10281	CYLINDER PIN
11	1	10458	SPACER, FRONT AXLE
12	1	10546	CYLINDER ROD PIN
13	1	11962	FLAP CLAMP
14	1	103903	FLAP
15	1	10347	TIRE & RIM 4.10/3.50-4
16	2	10347.50	BEARING, 1/2 BORE
17	1	104440-03	DECAL, 912
18	1	103341-05	DECAL, DANGER, CHAIN
19	2	05044	GREASE ZERK, 1/4-28 UNF
20	1	105307	GREASE ZERK, 1/4-28 UNF 90°
21	1	105301	HH CAP SCREW, 1/2-13 NC X 6 G5 ZINC
22	1	105046	NUT, GRIPCO, 1/2-13 NC G5 ZINC
23	4	10740	HH CAP SCREW, 3/8-24 NF X 3-1/2 G5 ZINC
24	4	05304	HH CAP SCREW, 5/16-18 NC X 1/2 G5 ZINC
25	1	105169	WHIZ-LOCK 5/16 - 18 X 1/2
26	4	05237	HH CAP SCREW, 1/4-20 NC X 1 G5 ZINC
27	4	05081	WASHER, 1/4 SAE ZINC
28	4	05096	NUT, NYLOCK, 1/4-20 NC ZINC

SEE DRAWING 00262-BOOM FOR BOOM & BOOM GUARD OPTIONS
SEE THE LAST PAGE OF THIS MANUAL FOR OUR MOST POPULAR CHAIN OPTIONS



BARRETO

TITLE: FRONT END
PRODUCT LINE: 912 TRENCHER
SCALE: 1:8
SHEET 1 OF 2
DWG# 00262



Reference #s 11, 15, 16, 21, 22 can be ordered as a kit, part# 10347-K

TITLE: FRONT END

BARRETO

PRODUCT LINE: 912 TRENCHER

SCALE: 1:8

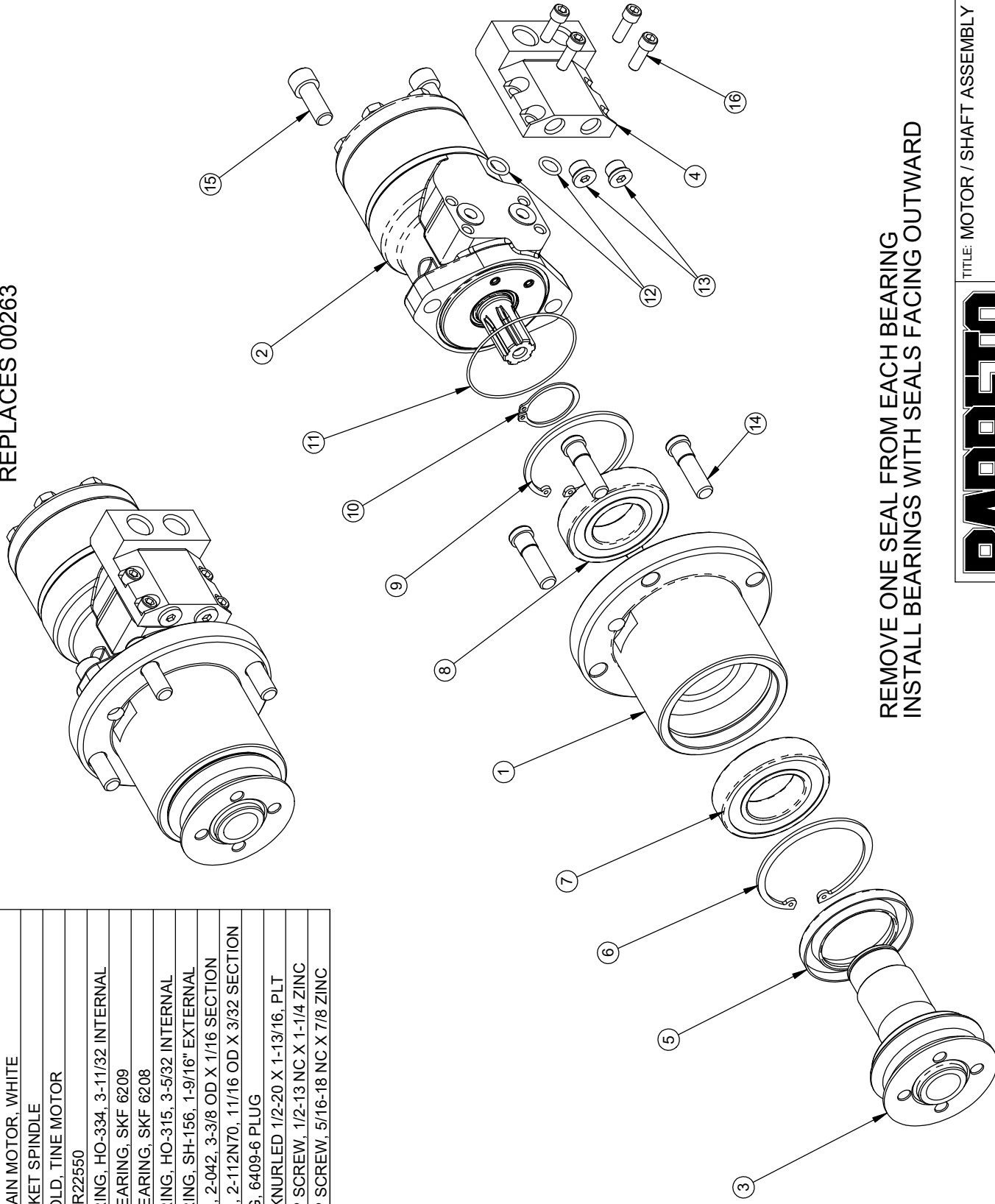
SHEET 2 OF 2

DWG# 00262

REF	QTY.	PART NO.	DESCRIPTION
1	1	10254	HOUSING TUBE
2	1	10450-W	DIG CHAIN MOTOR, WHITE
3	1	10252	SPROCKET SPINDLE
4	1	02065	MANIFOLD, TINE MOTOR
5	1	10285	SEAL CR22550
6	1	10284	SNAP RING, HO-334, 3-11/32 INTERNAL
7	1	10253	BALL BEARING, SKF 6209
8	1	03943	BALL BEARING, SKF 6208
9	1	05603	SNAP RING, HO-315, 3-5/32 INTERNAL
10	1	05607	SNAP RING, SH-156, 1-9/16" EXTERNAL
11	1	10689	O-RING, 2-042, 3-3/8 OD X 1/16 SECTION
12	2	03226	O-RING, 2-112N70, 11/16 OD X 3/32 SECTION
13	2	03302	FITTING, 6409-6 PLUG
14	4	05167	STUD, KNURLED 1/2-20 X 1-13/16, PLT
15	2	05585	SH CAP SCREW, 1/2-13 NC X 1-1/4 ZINC
16	4	05361	SH CAP SCREW, 5/16-18 NC X 7/8 ZINC

UPDATED 10/10/16

WHITE MOTOR STARTED WITH M2292, 9/24/14
REPLACES 00263



REMOVE ONE SEAL FROM EACH BEARING
INSTALL BEARINGS WITH SEALS FACING OUTWARD

BARRETO

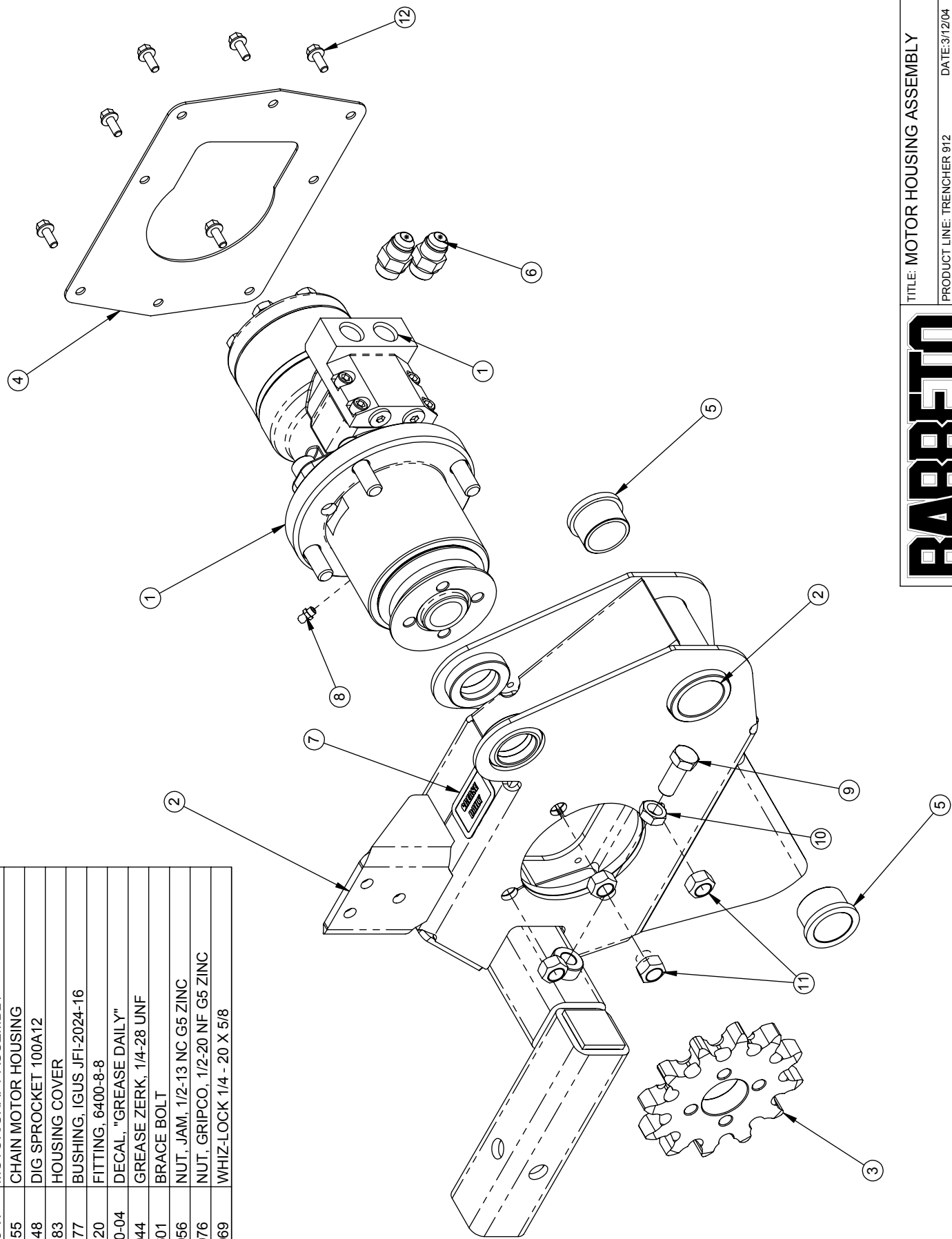
TITLE: MOTOR / SHAFT ASSEMBLY

PRODUCT LINE: TRENCHER 912 DATE: 3/12/04

SCALE: 1:4 DWG# 00263-W
SHEET 1 OF 1

REF QTY.	PART NO.	DESCRIPTION
1	1	00263-W
2	1	10255
3	1	10248
4	1	10283
5	2	10277
6	2	04520
7	1	03040-04
8	1	05044
9	1	10601
10	1	11056
11	4	05076
12	8	05069

UPDATED 10/10/16

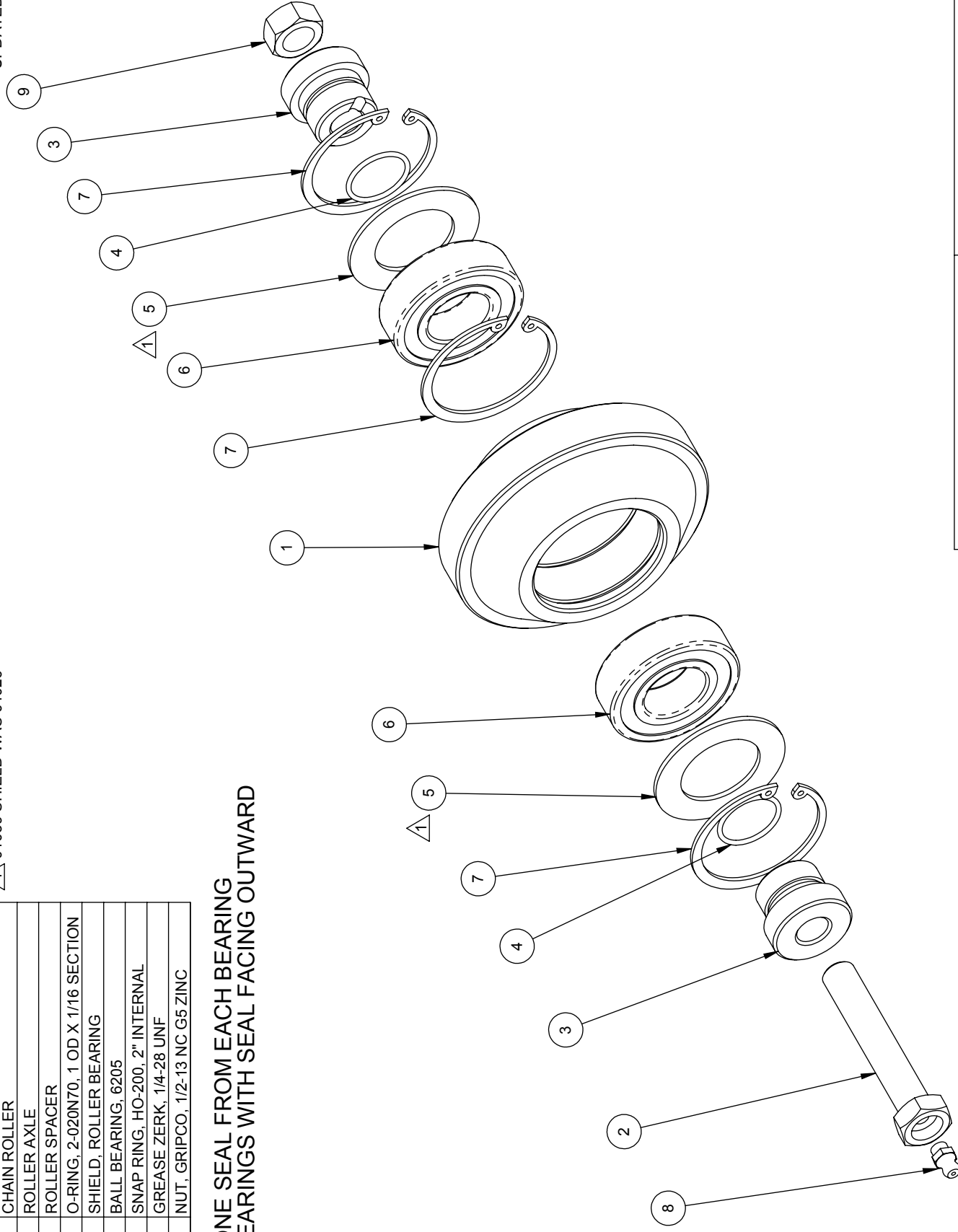


REF	QTY.	PART NO.	DESCRIPTION
1	1	10311	CHAIN ROLLER
2	1	10320	ROLLER AXLE
3	2	10312	ROLLER SPACER
4	2	10887	O-RING, 2-020N70, 1 OD X 1/16 SECTION
5	2	01039	SHIELD, ROLLER BEARING
6	2	03043	BALL BEARING, 6205
7	3	05024	SNAP RING, HO-200, 2" INTERNAL
8	1	05044	GREASE ZERK, 1/4-28 UNF
9	1	05046	NUT, GRIPCO, 1/2-13 NC G5 ZINC

REMOVE ONE SEAL FROM EACH BEARING
 INSTALL BEARINGS WITH SEAL FACING OUTWARD

 01039 SHIELD WAS 01026

UPDATED 10/10/16



BARRETO

TITLE: CHAIN ROLLER ASSEMBLY

PRODUCT LINE: TRENCHER 912 DATE: 3/11/04

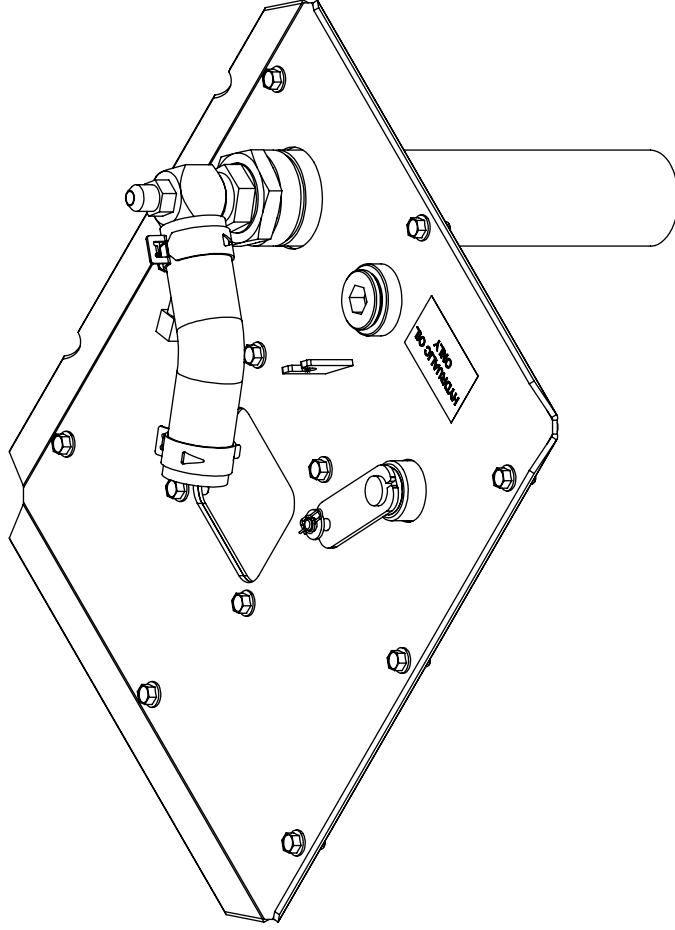
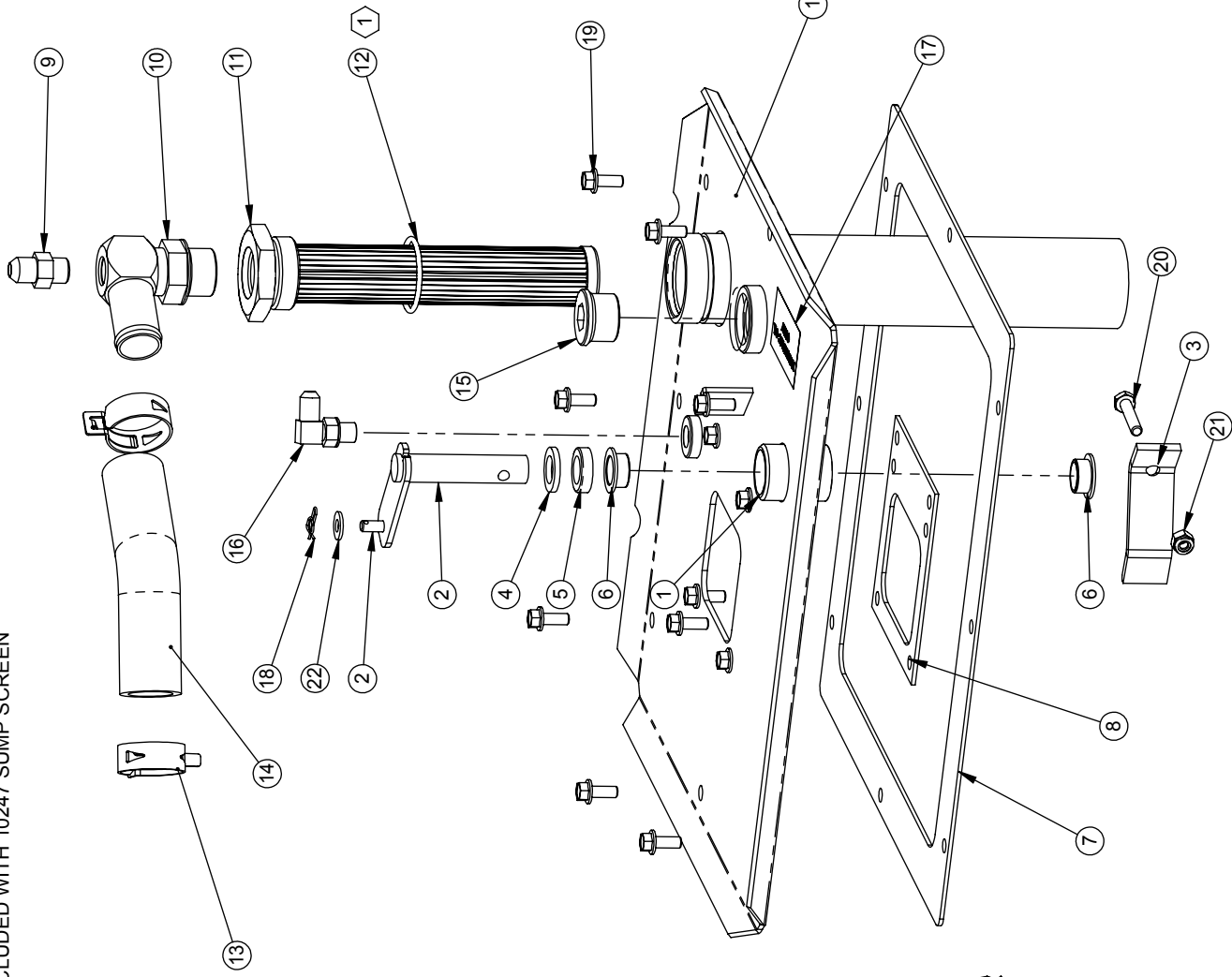
SCALE: 1:2 DWG# 00265

SHEET 1 OF 1

REF	QTY.	PART NO.	DESCRIPTION
1	1	10243	LID
2	1	10244	DUMP VALVE ARM
3	1	01211	DUMP VALVE LEVER
4	1	03061	FELT WASHER, 5/8 X 1 X 1/8
5	1	03020	SEAL
6	2	03060	BUSHING, IGUS MFI-1012-06
7	1	03241	LID GASKET
8	1	03242	MANIFOLD GASKET
9	1	10401	FITTING, 6400-6-6
10	1	10364	FITTING, 4601-16-12
11	1	10247	SUMP SCREEN #20 EXT #12 INT O-RING
12	1	03293	O-RING, 3-920N90, -20 FITTINGS
13	2	05225	CLAMP, 1" ID HOSE, CTB-35 ST
14	1	10366	SUCTION HOSE
15	1	10526	FITTING, 6409-12 PLUG
16	1	04555	FITTING, 6801-4-4
17	1	03040-06	DECAL, "HYDRAULIC OIL ONLY"
18	1	05038	RUE RING COTTER #8
19	12	05069	WHIZ-LOCK 1/4 - 20 X 5/8
20	1	05125	HH CAP SCREW, 1/4-20 NC X 1-1/4 G5 ZINC
21	1	05096	NUT, NYLOCK, 1/4-20 NC ZINC
22	1	05081	WASHER, 1/4 SAE ZINC

1 03293 O-RING IS INCLUDED WITH 10247 SUMP SCREEN

UPDATED 10/10/16



TITLE: LID ASSEMBLY

PRODUCT LINE: TRENCHER 912

DATE: 3/11/04

SCALE: 1:4

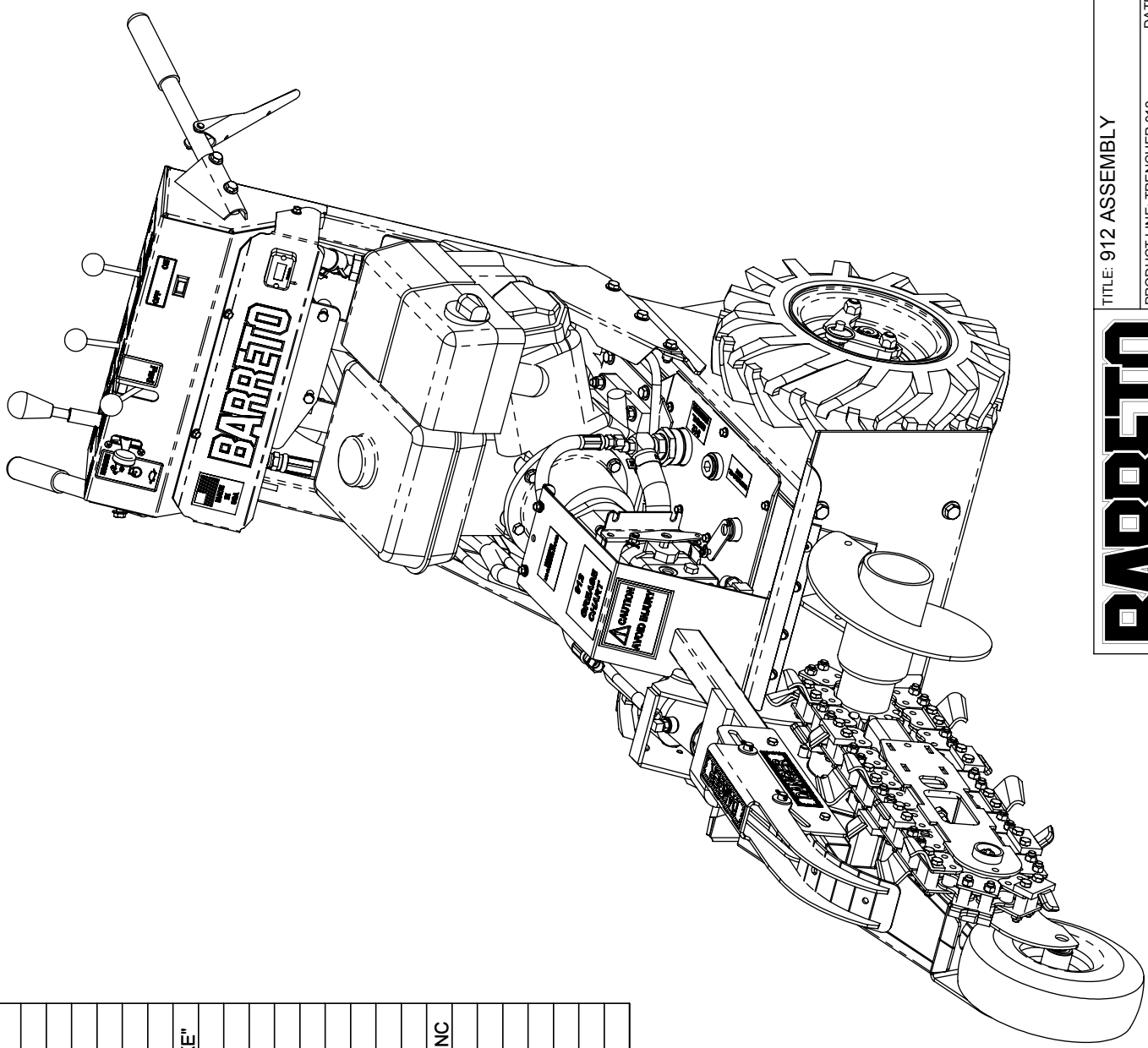
DWG# 00267

SHEET 1 OF 1

BARRETO

ITEM NO.	QTY.	PART NO.	DESCRIPTION
1	1	1 00247	BODY ASSEMBLY
2	1	1 00260	CONTROL ASSEMBLY
3	1	1 00261	ENGINE & PUMP ASSEMBLY
4	1	1 00262	FRONT END
5	1	1 10365	VENT HOSE ASSEMBLY
6	1	1 10544	PUMP COVER
7	1	1 03341-04	DECAL, "CAUTION - TO AVOID INJURY"
8	1	1 04440-09	DECAL, GREASE CHART
9	1	1 03341-24	DECAL, "WARNING - NO PARKING BRAKE"
10	1	1 10369	HOSE, PUMP OUTPUT
11	1	1 10372	HOSE, HYDROSTAT, RIGHT
12	1	1 10373	HOSE, HYDROSTAT, LEFT
13	1	1 10412	HOSE, CHAIN MOTOR, TOP
14	1	1 10413	HOSE, CHAIN MOTOR, BOTTOM
15	1	1 10414	HOSE, HYDROSTAT SUCTION
16	1	1 10415	HOSE, HYDROSTAT RETURN
17	1	1 10550	CYLINDER HOSE, TOP / PISTON
18	1	1 10551	CYLINDER HOSE, BOTTOM / ROD
19	4	1 05323	HH CAP SCREW, 1/2-13 NC X 1-1/4 G5 ZINC
20	4	1 05102	WASHER, 1/2 SAE ZINC HARDENED
21	6	1 05059	HH CAP SCREW, 3/8-16 NC X 1 G5 ZINC
22	6	1 05101	WASHER, 3/8 SAE ZINC
23	6	1 05073	NUT, NYLOCK, 3/8-16 NC ZINC
24	4	1 05049	WHIZ-LOCK 1/4 - 20 X 3/4
25	8	1 05081	WASHER, 1/4 SAE ZINC
26	4	1 05096	NUT, NYLOCK, 1/4-20 NC ZINC

UPDATED 10/12/16



BARRETO

TITLE: 912 ASSEMBLY

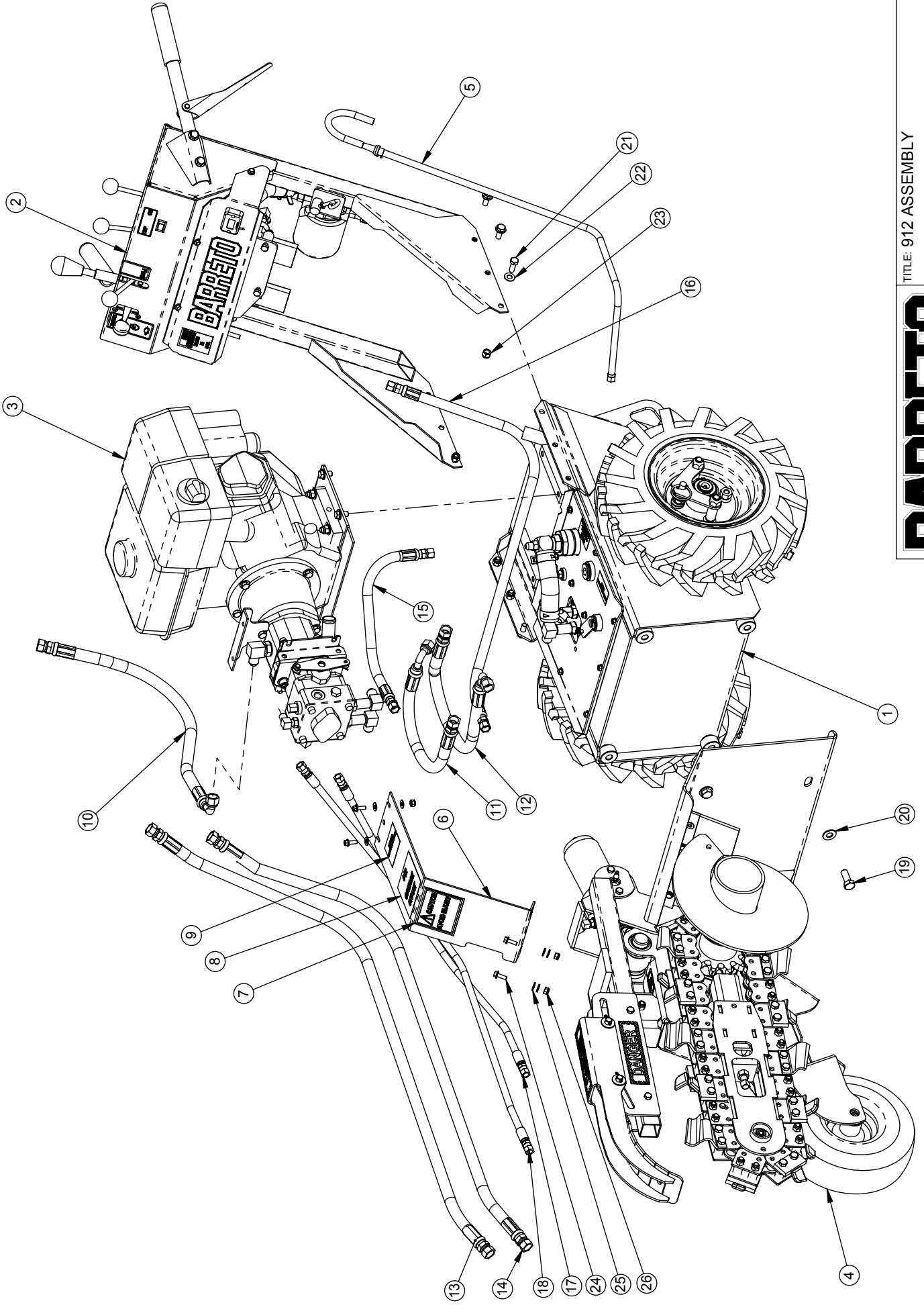
PRODUCT LINE: TRENCHER 912

DATE: 8/26/04

SCALE: 1:9

DWG# 00269

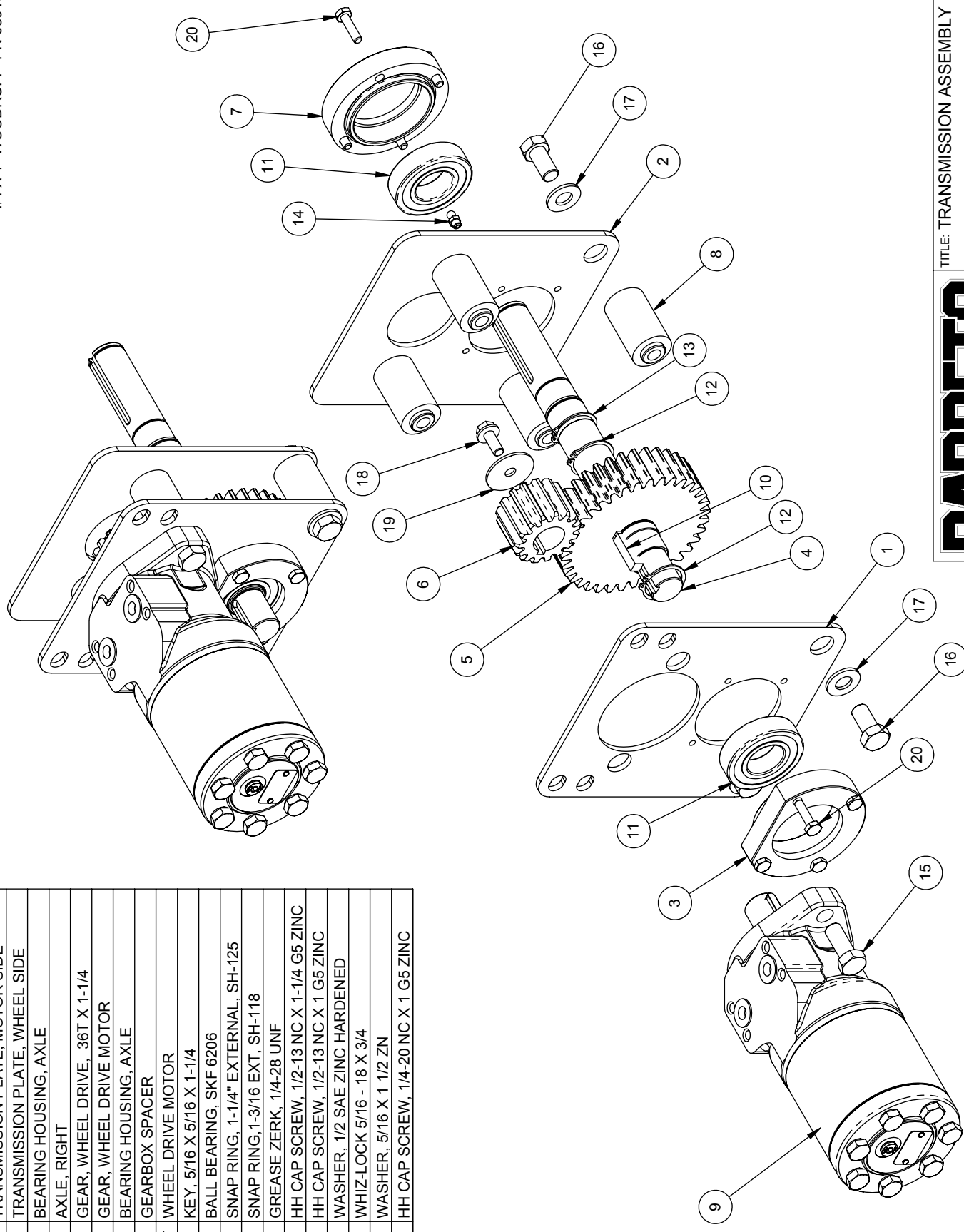
SHEET 1 OF 2



REF	QTY.	PART NO.	DESCRIPTION
1	1	10228	TRANSMISSION PLATE, MOTOR SIDE
2	1	10229	TRANSMISSION PLATE, WHEEL SIDE
3	1	10183	BEARING HOUSING, AXLE
4	1	10230	AXLE, RIGHT
5	1	10063	GEAR, WHEEL DRIVE, 36T X 1-1/4
6	1	02075	GEAR, WHEEL DRIVE MOTOR
7	1	10235	BEARING HOUSING, AXLE
8	4	10219	GEARBOX SPACER
9	1	04502-F	WHEEL DRIVE MOTOR
10	1	05015	KEY, 5/16 X 5/16 X 1-1/4
11	2	03280	BALL BEARING, SKF 6206
12	2	05214	SNAP RING, 1-1/4" EXTERNAL, SH-125
13	1	05034	SNAP RING, 1-3/16 EXT, SH-118
14	1	05044	GREASE ZERK, 1/4-28 UNF
15	2	05323	HH CAP SCREW, 1/2-13 NC X 1-1/4 G5 ZINC
16	6	05067	HH CAP SCREW, 1/2-13 NC X 1 G5 ZINC
17	6	05102	WASHER, 1/2 SAE ZINC HARDENED
18	1	05140	WHIZ-LOCK 5/16 - 18 X 3/4
19	1	05546	WASHER, 5/16 X 1 1/2 ZN
20	8	05237	HH CAP SCREW, 1/4-20 NC X 1 G5 ZINC

REVISED 10/13/13

KEY SUPPLIED WITH MOTOR
1/4 X 1" WOODRUFF PN 05013



BARRETO

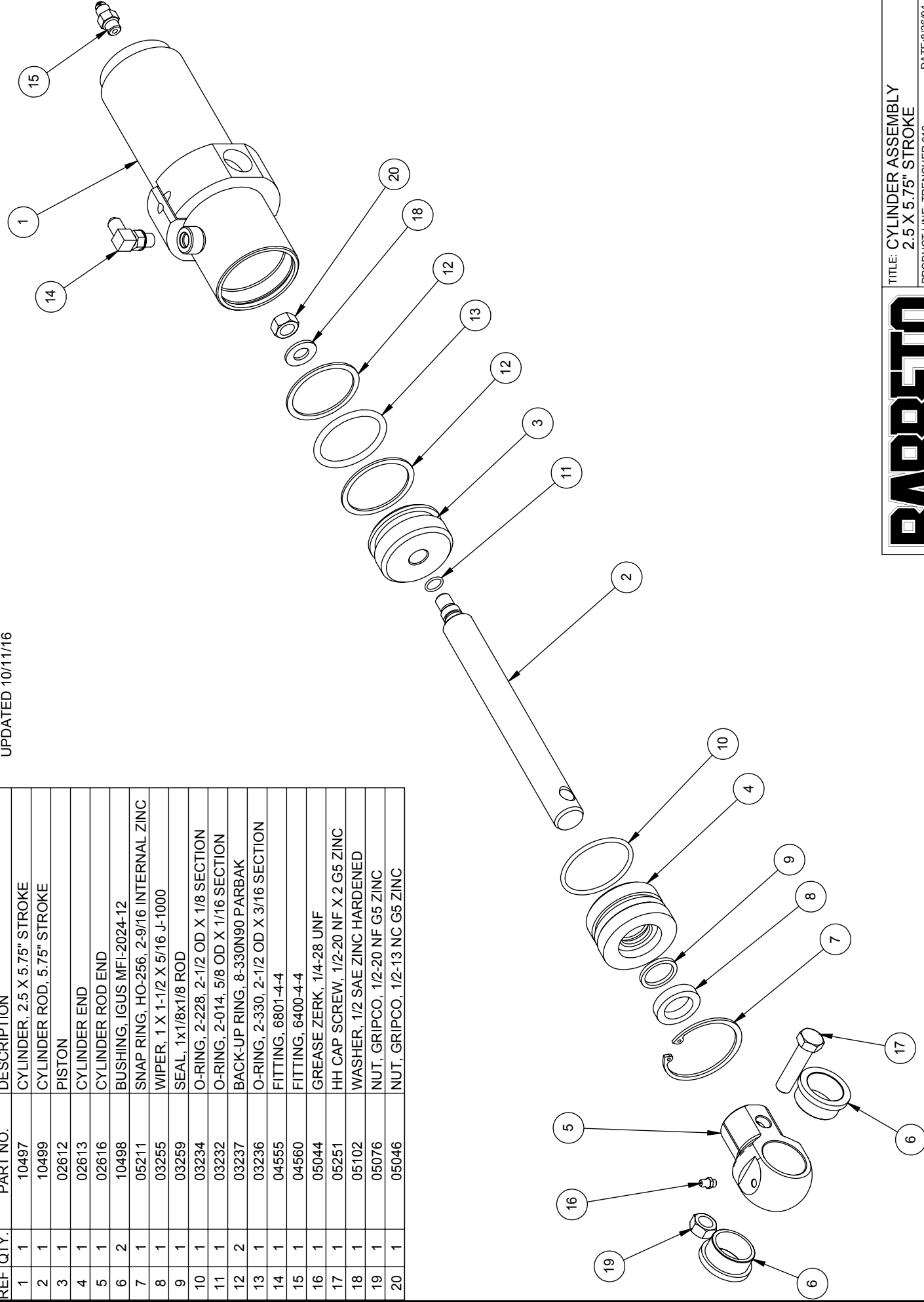
TITLE: TRANSMISSION ASSEMBLY

PRODUCT LINE: TRENCHEUR 912 DATE: 3/10/04

SCALE: 1:4 DWG# 00268
SHEET 1 OF 1

REF	QTY.	PART NO.	DESCRIPTION
1	1	10497	CYLINDER, 2.5 X 5.75" STROKE
2	1	10499	CYLINDER ROD, 5.75" STROKE
3	1	02612	PISTON
4	1	02613	CYLINDER END
5	1	02616	CYLINDER ROD END
6	2	10498	BUSHING, IGUS MFI-2024-12
7	1	05211	SNAP RING, HO-256, 2-9/16 INTERNAL ZINC
8	1	03255	WIPER, 1 X 1-1/2 X 5/16 J-1000
9	1	03259	SEAL, 1x1/8x1/8 ROD
10	1	03234	O-RING, 2-228, 2-1/2 OD X 1/8 SECTION
11	1	03232	O-RING, 2-014, 5/8 OD X 1/16 SECTION
12	2	03237	BACK-UP RING, 8-330N90 PARBAK
13	1	03236	O-RING, 2-330, 2-1/2 OD X 3/16 SECTION
14	1	04555	FITTING, 6801-4-4
15	1	04560	FITTING, 6400-4-4
16	1	05044	GREASE ZERK, 1/4-28 UNF
17	1	05251	HH CAP SCREW, 1/2-20 NF X 2 G5 ZINC
18	1	05102	WASHER, 1/2 SAE ZINC HARDENED
19	1	05076	NUT, GRIPCO, 1/2-20 NF G5 ZINC
20	1	05046	NUT, GRIPCO, 1/2-13 NC G5 ZINC

UPDATED 10/11/16

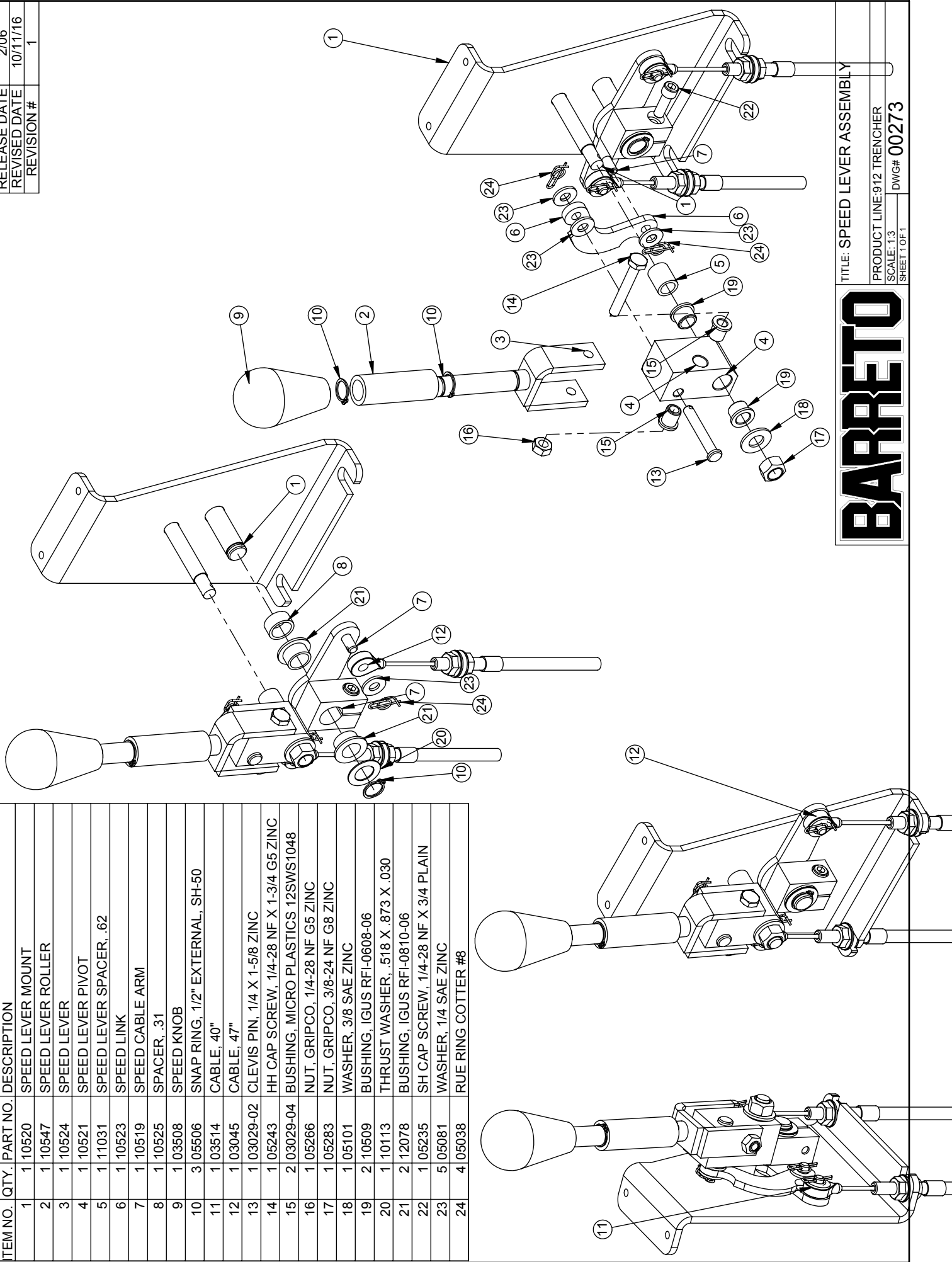


BARRETO

TITLE: CYLINDER ASSEMBLY
 2.5 X 5.75" STROKE
 PRODUCT LINE: TRENCHER 912
 SCALE: 1:4
 SHEET 1 OF 1
 DWG# 00271
 DATE: 8/26/04

RELEASE DATE	2/06
REVISED DATE	10/11/16
REVISION #	1

ITEM NO.	QTY.	PART NO.	DESCRIPTION
1	1	10520	SPEED LEVER MOUNT
2	1	10547	SPEED LEVER ROLLER
3	1	10524	SPEED LEVER
4	1	10521	SPEED LEVER PIVOT
5	1	11031	SPEED LEVER SPACER, .62
6	1	10523	SPEED LINK
7	1	10519	SPEED CABLE ARM
8	1	10525	SPACER, .31
9	1	03508	SPEED KNOB
10	3	05506	SNAP RING, 1/2" EXTERNAL, SH-50
11	1	03514	CABLE, 40"
12	1	03045	CABLE, 47"
13	1	03029-02	CLEVIS PIN, 1/4 X 1-5/8 ZINC
14	1	05243	HH CAP SCREW, 1/4-28 NF X 1-3/4 G5 ZINC
15	2	03029-04	BUSHING, MICRO PLASTICS 12SWS1048
16	1	05266	NUT, GRIPCO, 1/4-28 NF G5 ZINC
17	1	05283	NUT, GRIPCO, 3/8-24 NF G8 ZINC
18	1	05101	WASHER, 3/8 SAE ZINC
19	2	10509	BUSHING, IGUS RFI-0608-06
20	1	10113	THRUST WASHER, .518 X .873 X .030
21	2	12078	BUSHING, IGUS RFI-0810-06
22	1	05235	SH CAP SCREW, 1/4-28 NF X 3/4 PLAIN
23	5	05081	WASHER, 1/4 SAE ZINC
24	4	05038	RUE RING COTTER #8



BARRETO

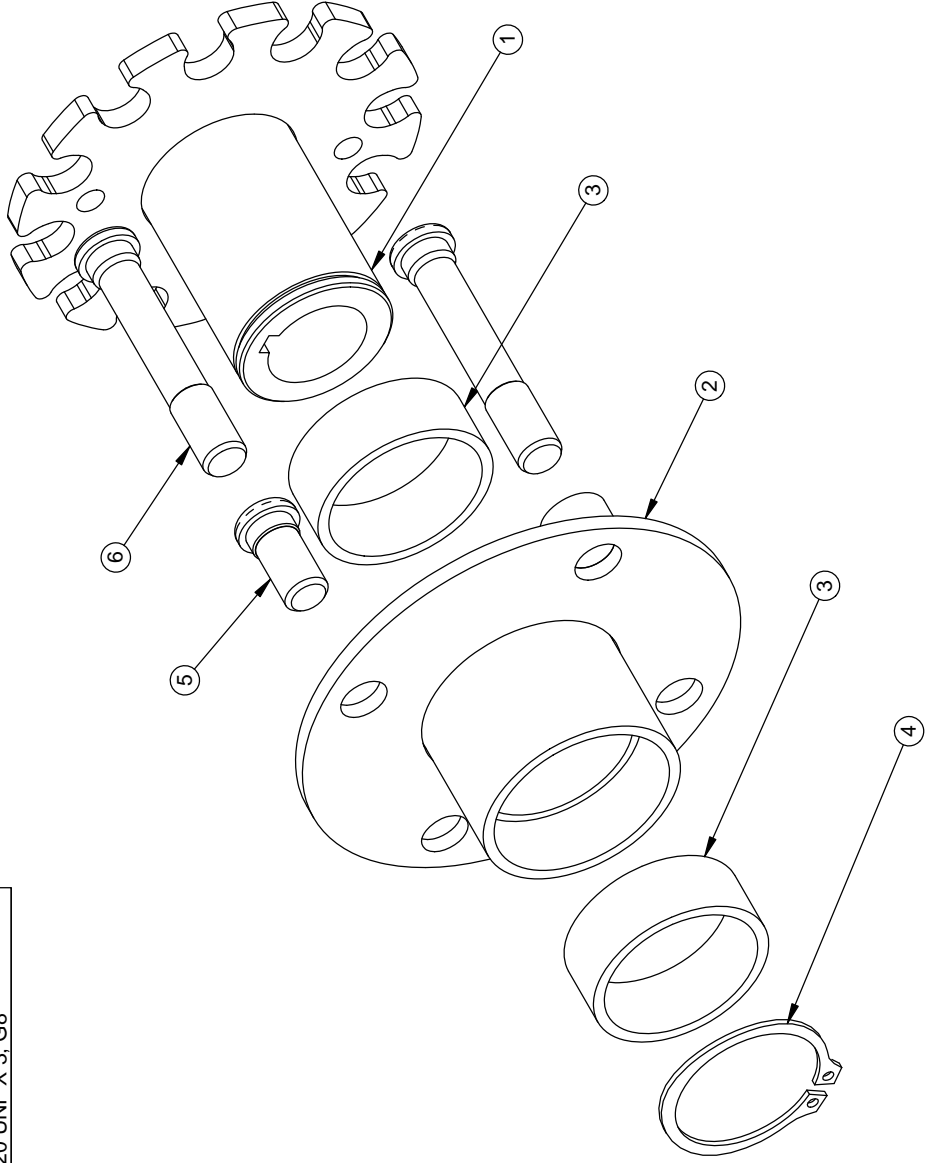
TITLE: SPEED LEVER ASSEMBLY

PRODUCT LINE: 912 TRENCHER

SCALE: 1:3

SHEET 1 OF 1 DWG# 00273

REF	QTY.	PART NO.	DESCRIPTION
1	1	02269	WHEEL HUB
2	1	01252	FREE WHEEL HUB
3	2	03168	BUSHING, SLEEVE, NYLON, IGUS MSI-2832-12
4	1	05610	SNAP RING, SH-175, 1-3/4" EXTERNAL
5	1	05066	KNURLED STUD, 1/2-20 UNF X 1, G8
6	2	05166	KNURLED STUD, 1/2-20 UNF X 3, G8



NOTES:

- 1. USAGE: 2 PER 00231 R3, 00256 R1, & 10388.
- 1 OF 00231 R3 PER 1318.
- 1 OF 00256 R1 PER 912, 916 & 918.
- 1 OF 10388 PER 1320 & 1620.



TITLE: WHEEL HUB ASSY, 1-1/8" BORE

PRODUCT LINE: COMMON DATE: 8/6/07

SCALE: 1:2 DWG# 02269-HUB

SHEET 1 OF 1

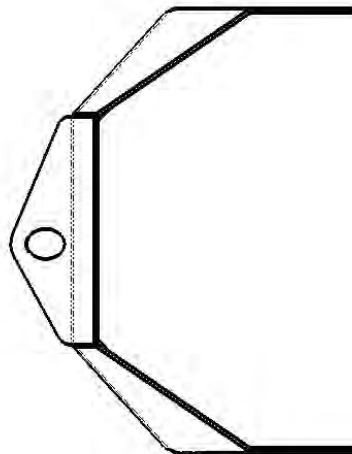
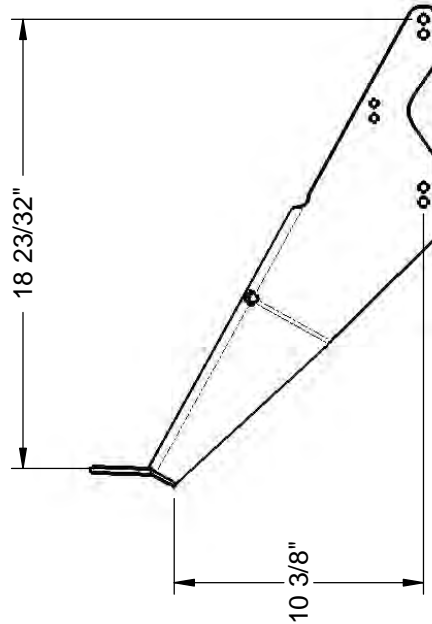
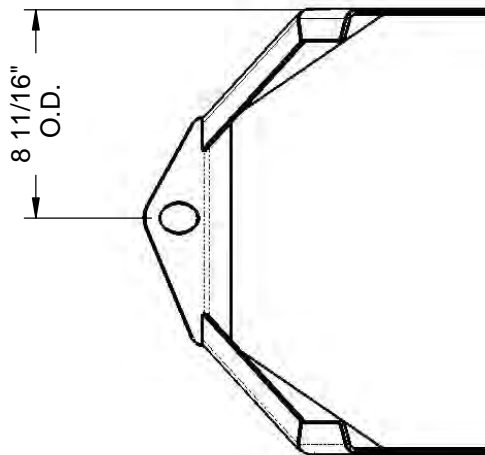
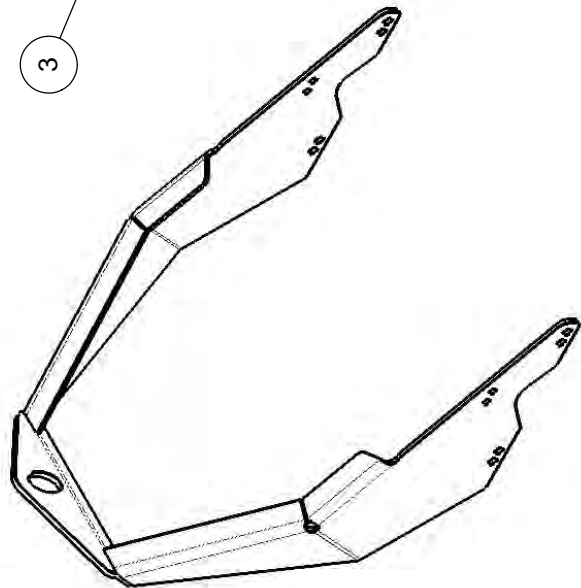
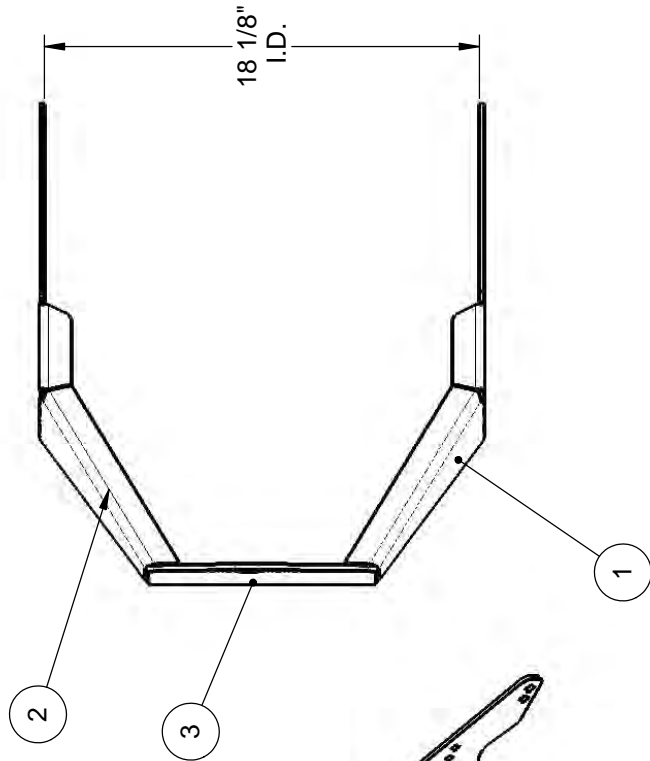
REF.	QTY.	PART NO.	DESCRIPTION
1	1	A1560-1L	SIDE PLATE, LIFT EYE
2	1	A1560-1R	SIDE PLATE
3	1	A1560-2	EYE

<div> <div> <div>66498 HWY 203</div> <div>LA GRANDE, OR 97850</div> <div>(541) 963-7348</div> </div> <div> <div>66498 HWY 203</div> <div>LA GRANDE, OR 97850</div> <div>(541) 963-7348</div> </div> </div>		
DATE	REV/DESCRIPTION	DWN/APP
08/07	0 INITIAL RELEASE	MZL
02/27/09	1 CHANGED BENDS FOR MORE HOSE CLEARANCE	MZL

MASS: 10.751 POUNDS

NOTES:

FINISH: PAINT BLACK



TOLERANCES UNLESS OTHERWISE SPECIFIED	
FRACTIONS:	DECIMALS:
>= 1/16 = ±1/16	.X = ±.1
1/32 = ±1/32	.XX = ±.03
1/64 = ±1/64	.XXX = ±.005
ANGLES:	
±2°	
TITLE: LIFT EYE, 912	
PRODUCT LINE: 912 TRENCHER	
SCALE: 1:8	DWG# A1560
SHEET 1 OF 1	

912 Trencher decals

P/N 03040-01



P/N 03040-02



P/N 03040-04



P/N 03040-06



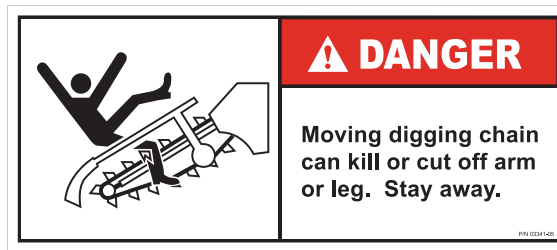
P/N 03040-07



P/N 03040-57



P/N 03341-05



P/N 03341-07



P/N 03341-12



P/N 03341-24



P/N 04430-05



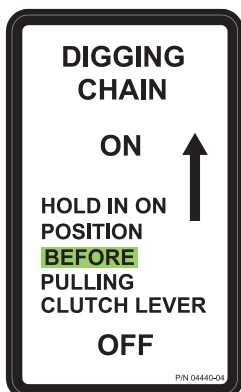
P/N 04440-02



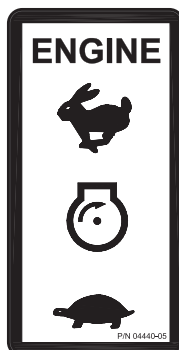
P/N 04440-03



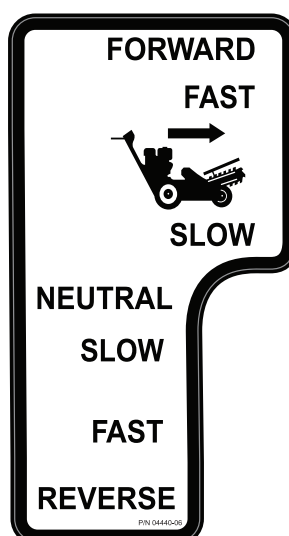
P/N 04440-04



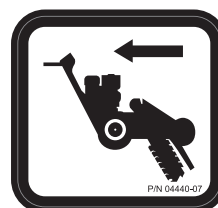
P/N 04440-05



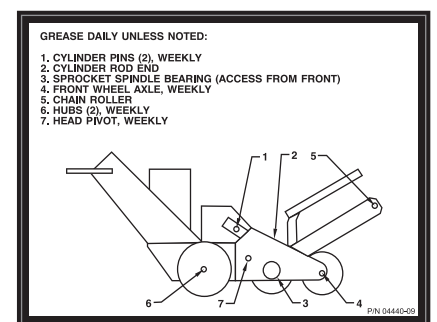
P/N 04440-06



P/N 04440-07



P/N 04440-09



ORDER P/N K3341-912 FOR COMPLETE SET



712/912 TRENCHER CHAIN TYPES / DESCRIPTIONS

STANDARD CUP CHAIN (AKA Skip Tooth)

This chain has a cup tooth on every other link.

Where to use it

This chain is most effective in loamy soil - soil that is packable into clods. It is also more effective in clay or "gumbo" soil that is sticky and clings to the chain. The space between the cups allows the soil to let go instead of running around with the chain as a slurry which prevents effective digging.



DOUBLE CUP CHAIN

This chain has a cup tooth on every link.

Where to use it

This chain is best for sand and dry, loose soil that has a tendency to fall back into the trench. The extra cups provide for better clean-out.



COMBO/SHARK CHAIN

This chain has an alternating pattern of cup and Shark teeth.

Where to use it.

Use this chain in pretty much the same conditions as the standard combo chain. Although not as aggressive, the Shark teeth last longer and do not fall off. This is our most popular chain.



SHARK CHAIN

The teeth on this chain are all Shark teeth that are welded onto the chain. Replacement teeth are not available for this chain.

Where to use it.

This chain can be used in the most adverse soils. It is good in rocky soil, "cliché", limestone, hard-pan and any other hard to dig soils. It does not clean out well in sandy or dry, loose, loamy soil. This is not the fastest but it is the most durable chain available. It is not uncommon for the teeth to outlast the chain rollers. When the rollers wear out, the complete chain must be replaced.



BOLT-ON SHARK CHAIN

This chain utilizes a standard chain blank and has Shark teeth that are bolted to the chain blank.

Where to use it.

This chain is good in all the conditions described for the Shark chain. The advantage is the teeth can be removed when the chain wears out and can be used on a new blank. It is not uncommon for the teeth to last through two chains.



NOTE: The 712 trencher chains are available in 12" & 18" lengths and 4" & 5" widths. The 912 chains are available in 12", 18", & 24" lengths and 4" & 6" widths.