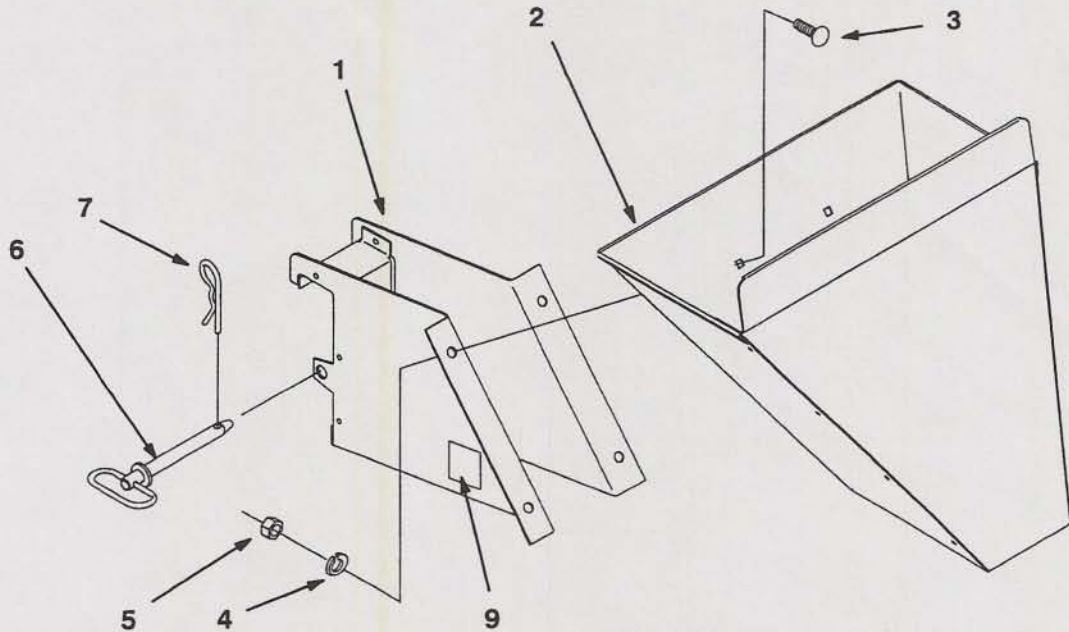


Optional Trench Filling Attachment – Product Number 86150



8 - Installation Manual and Parts List

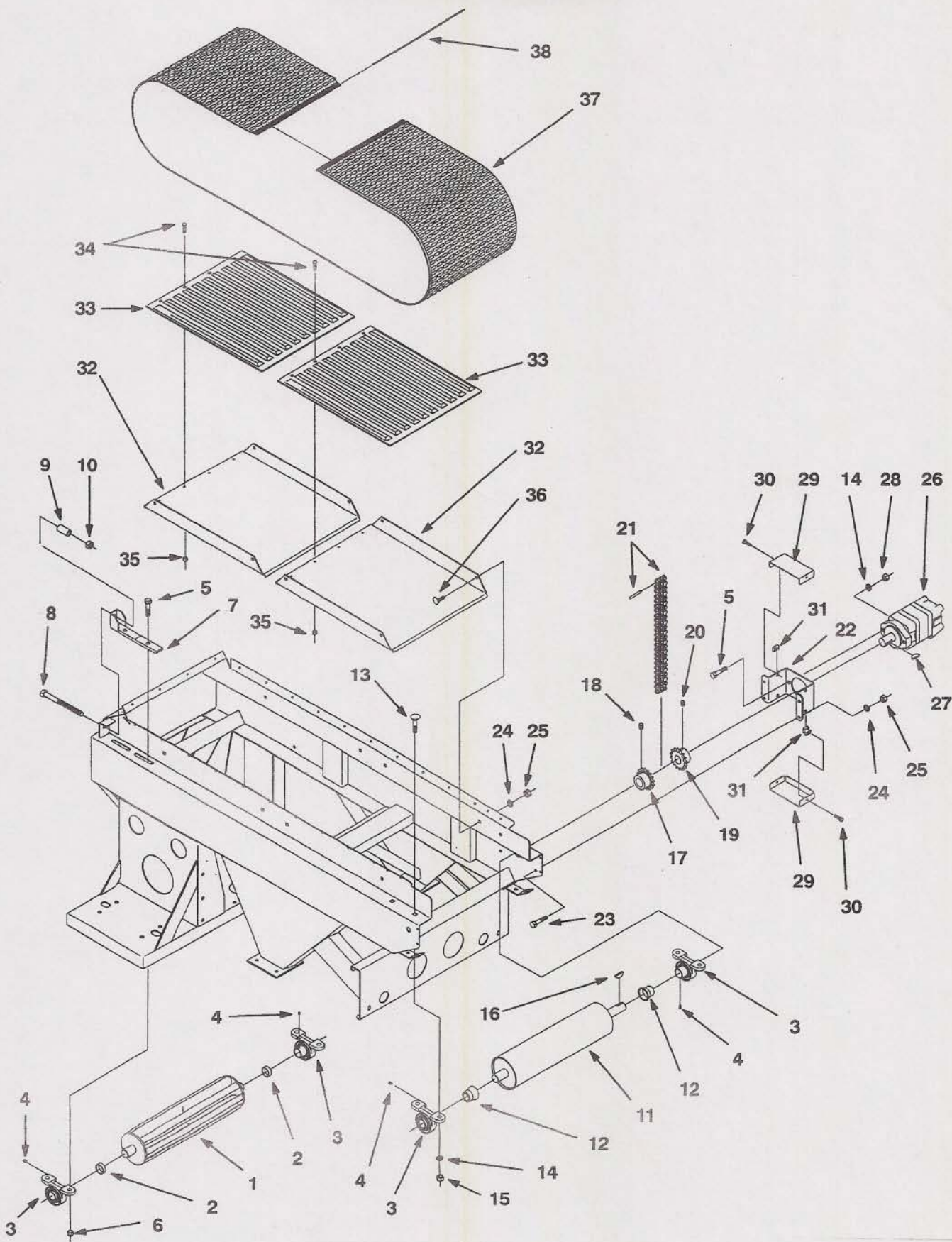
Item No.	Part No.	Description	Qty.
1	661755	Mounting Bracket, Trench Filling Attachment .....	1
2	661756	Chute, Trench Filling Attachment .....	1
3	658240	Bolt, Carriage, 5/16"-18 x 3/4" .....	4
4	446134	Washer, Lock, 5/16" .....	4
5	443106	Nut, Hex, 5/16"-18 .....	4
6	659259	Pin, Hitch, 5/8", Includes Hairpin .....	1
7	660076	Hairpin, Cotter, 0.148" Wire x 2-3/4" Long .....	1
8	661757	Installation Manual and Parts List .....	1
9	661758	Decal, Product Identification .....	1



## Hitch, Rear Deflector, Axle and Tires

Item No.	Part No.	Description	Qty.
1	<del>86119</del>	Hitch, Tow Bar ... <i>662449</i> .....	1
2	400458	Screw, Hex Head, 1/2"-20 x 4-1/2" .....	2
3	446154	Washer, Lock, 1/2" .....	2
4	443820	Nut, Hex, 1/2"-20 .....	2
5	659259	Pin, Hitch, 5/8" .....	1
6	659278	Jackstand Assembly (Complete With Mounting Hardware) .....	1
7	659279	Chains, Safety, 1 Pair .....	1
8	661426	Axle .....	1
9	460032	Pin, Cotter, 1/8" x 1-1/2" .....	2
10	400264	Screw, Hex Head, 3/8"-16 x 1-1/4" .....	8
11	452006	Washer, Flat, 3/8" ID x 7/8" OD x 5/64" Thick .....	8
12	446142	Washer, Lock, 3/8" .....	8
13	443110	Nut, Hex, 3/8"-16 .....	8
14	661383	Hub Assembly, Includes Lug Bolts, Wheel Bearings, Seal and Hub Cover .....	2
15	661574	Bearing, Wheel, Inner .....	2
16	661573	Bearing, Wheel, Outer .....	2
17	661577	Seal, Wheel Bearing .....	2
18	657823	Cover, Hub Dust Cap .....	2
19	499227	Washer, Flat, 13/16" ID x 1-1/2" OD x 1/8" Thick .....	2
20	445691	Nut, Hex, 3/4"-16 Slotted .....	2
21	661670	Wheel and Tire Assembly .....	2
22	661496	Wheel Only, 12" Diameter x 10-1/2" Wide .....	2
23	661675	Tire Only, 26.5 x 14-12, 4 Ply Ultra Trac .....	2
24	661561	Nut, Lug, 1/2"-20 .....	10
25	661685	Bolt, Lug 1/2"-20 (Service Part) .....	10
26	661441	Deflector, Rear .....	1
27	661619	Screw, Hex Head, 1/4"-20 x 5/8" Whiz-Lock .....	4
28	661620	Nut, Hex, 1/4"-20 Whiz-Lock .....	4
29	658016	Cable Tie, 5/16" x 15-1/4" .....	2

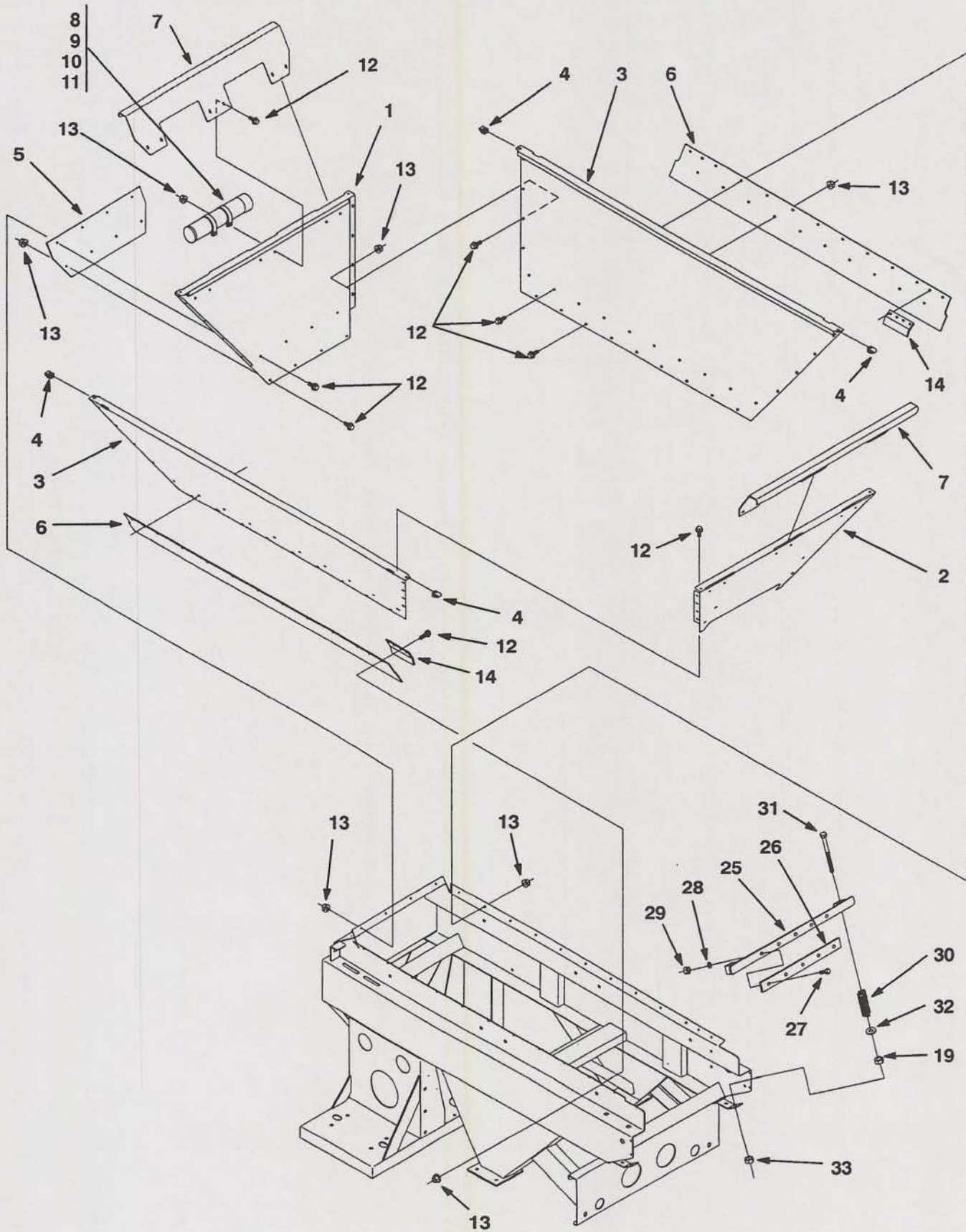
### Conveyor Belt, Pan and Rollers



## Conveyor Belt, Pan and Rollers

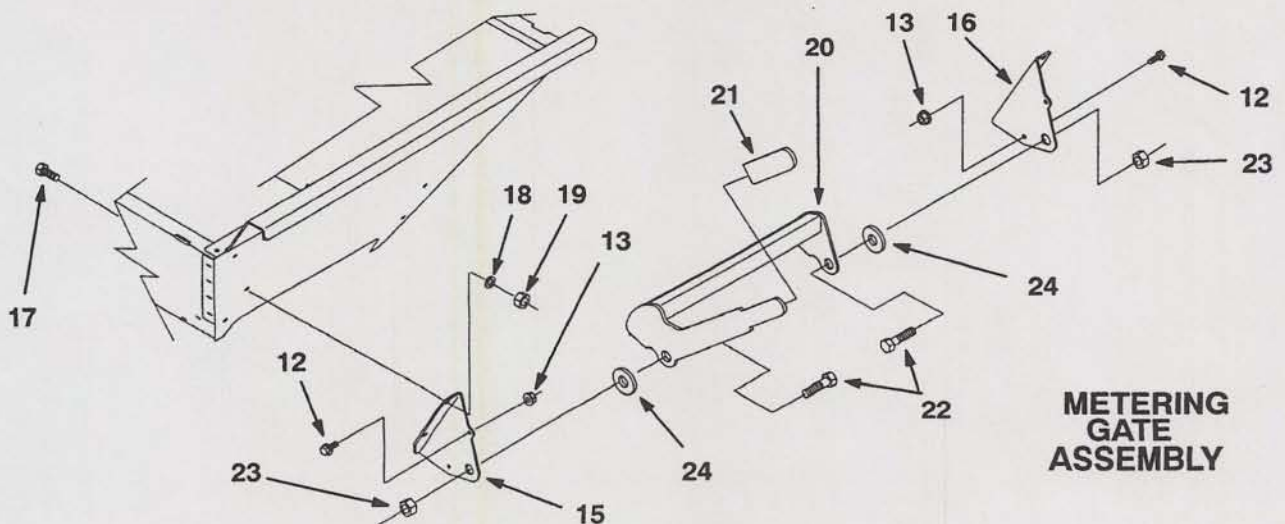
Item No.	Part No.	Description	Qty.
1	661422	Roller, Idler, SP-1530	1
2	653393	Spacer, Idler Roller	2
3	655174	Bearing, Pillow Block	4
4	499051	Set Screw, 1/4"-28 x 1/4"	4
5	400444	Screw, Hex Head, 1/2"-20 x 1-3/4"	6
6	444816	Nut, Hex, 1/2"-20 Flexloc	4
7	658073	Plate, Sliding	2
8	660048	Bolt, Tap, 5/8"-11 x 6", Conveyor Belt Tension Adjuster	2
9	660049	Spacer, Tension Adjuster	2
10	499432	Nut, Hex, 5/8"-11 Flexloc	2
11	661433	Roller, Drive, SP-1530	1
12	657998	Spacer, Flared	2
13	440194	Bolt, Carriage, 1/2"-13 x 1-1/2"	2
14	446154	Washer, Lock, 1/2"	2
15	443118	Nut, Hex, 1/2"-13	2
16	463031	Key, Woodruff, 1/4" x 1"	1
17	661371	Coupling Half, Sprocket, 1-1/4" Bore	1
18	415509	Screw, Set, 1/4"-20 x 1/4"	2
19	661372	Coupling Half, Sprocket, 1" Bore	1
20	415519	Screw, Set, 5/16"-18 x 3/8"	2
21	661373	Chain, Coupling, Includes Link Pin	1
22	661439	Brace, Belt Motor	1
23	400262	Screw, Hex Head, 3/8"-16 x 1"	4
24	446142	Washer, Lock, 3/8"	12
25	443110	Nut, Hex, 3/8"-16	12
26	659388	Motor Hydraulic, Conveyor Belt Drive	1
27	463031	Key, Woodruff, 1/4" x 1"	1
28	443120	Nut, Hex, 1/2"-20	2
29	661430	Guard, Motor Mount	2
30	661619	Screw, Hex Head, 1/4"-20 x 5/8" Whiz-Lock	4
31	659276	Nut, Clip, 1/4"-20	4
32	661421	Pan, SP-1530	2
33	661298	Cover, Pan	2
34	499025	Screw, Machine, Pan Head, 1/4"-20 x 5/8" (Service Part)	8
35	499413	Nut, Hex, 1/4"-20 KEPS (Service Part)	8
36	657766	Bolt, Carriage, 3/8"-16 x 3/4"	8
37	661370	Belt, Spinner Conveyor	1
38	655363	Splice, Conveyor Belt	1

## Hopper, Conveyor Belt Scraper, and Metering Gate Assembly



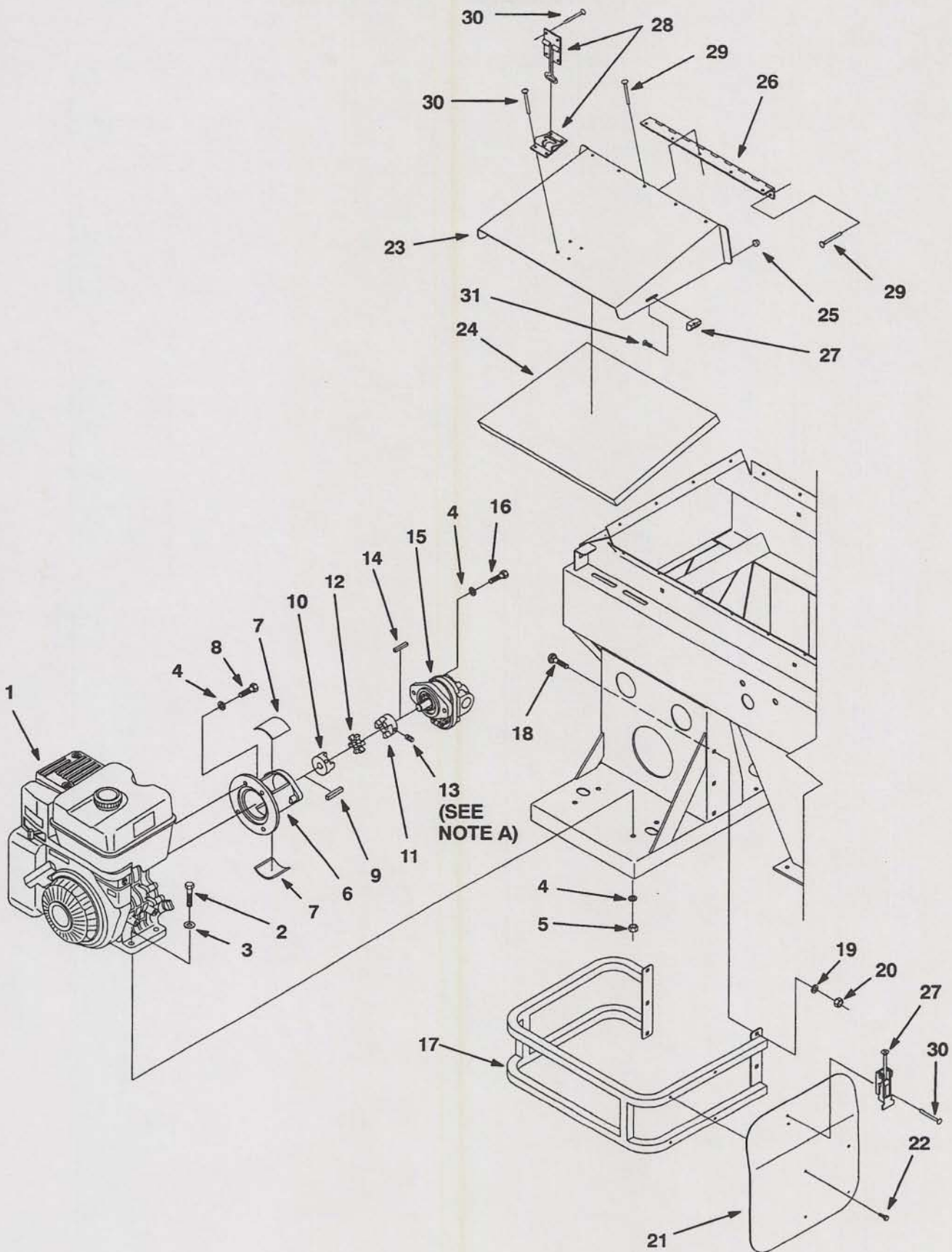
Hopper, Conveyor Belt Scraper, and Metering Gate Assembly

Item No.	Part No.	Description	Qty.
1	661414	Panel, Hopper, Front, SP-1530	1
2	661416	Panel, Hopper, Rear, SP-1530	1
3	661415	Panel, Hopper, Side, SP-1530	2
4	499410	Nut, Clip, 1/4"-20 Tinnerman	4
5	661412	Seal, Hopper, Front	1
6	661413	Seal, Hopper, Side	2
7	661417	Deflector, Hopper	2
8	659270	Plug, Bottom, Manual Tube	1
9	659271	Cap, Top, Manual Tube	1
10	659269	Tube, Manual, Clear Plastic	1
11	659272	Clamp, Manual Tube	2
12	661619	Screw, Hex Head, 1/4"-20 x 5/8" Whiz-Lock	86
13	661620	Nut, Hex, 1/4"-20 Whiz-Lock	82
14	661610	Retainer, Seal Strip	2
15	661432	Bracket, Metering Gate, Left Hand	1
16	661431	Bracket, Metering gate, Right Hand	1
17	400258	Screw, Hex Head, 3/8"-16 x 3/4"	4
18	446142	Washer, Lock, 3/8"	4
19	443110	Nut, Hex, 3/8"-16	6
20	661418	Gate, Metering	1
21	657208	Grip, Handle, Metering Gate	1
22	660962	Screw, Hex Head, 3/4"-16 x 1"	2
23	659984	Nut, Hex, 3/4"-16, Nylock Thin	2
24	661020	Washer, Special, Metering Gate, 1/4" Wide Plastic	2
25	661579	Bracket, Scraper	1
26	661582	Scraper, Plastic	1
27	400108	Screw, Hex Head, 1/4"-20 x 3/4"	5
28	446128	Washer, Lock, 1/4"	5
29	443102	Nut, Hex, 1/4"-20	5
30	661463	Spring, Scraper Tension	2
31	657671	Screw, Hex Head, 3/8"-16 x 4"	2
32	452006	Washer, Flat, 3/8" ID x 7/8" OD x 5/64" Thick	2
33	444810	Nut, Hex, 3/8"-16 Flexloc	2



METERING GATE ASSEMBLY

Engine and Hydraulic Pump Assembly

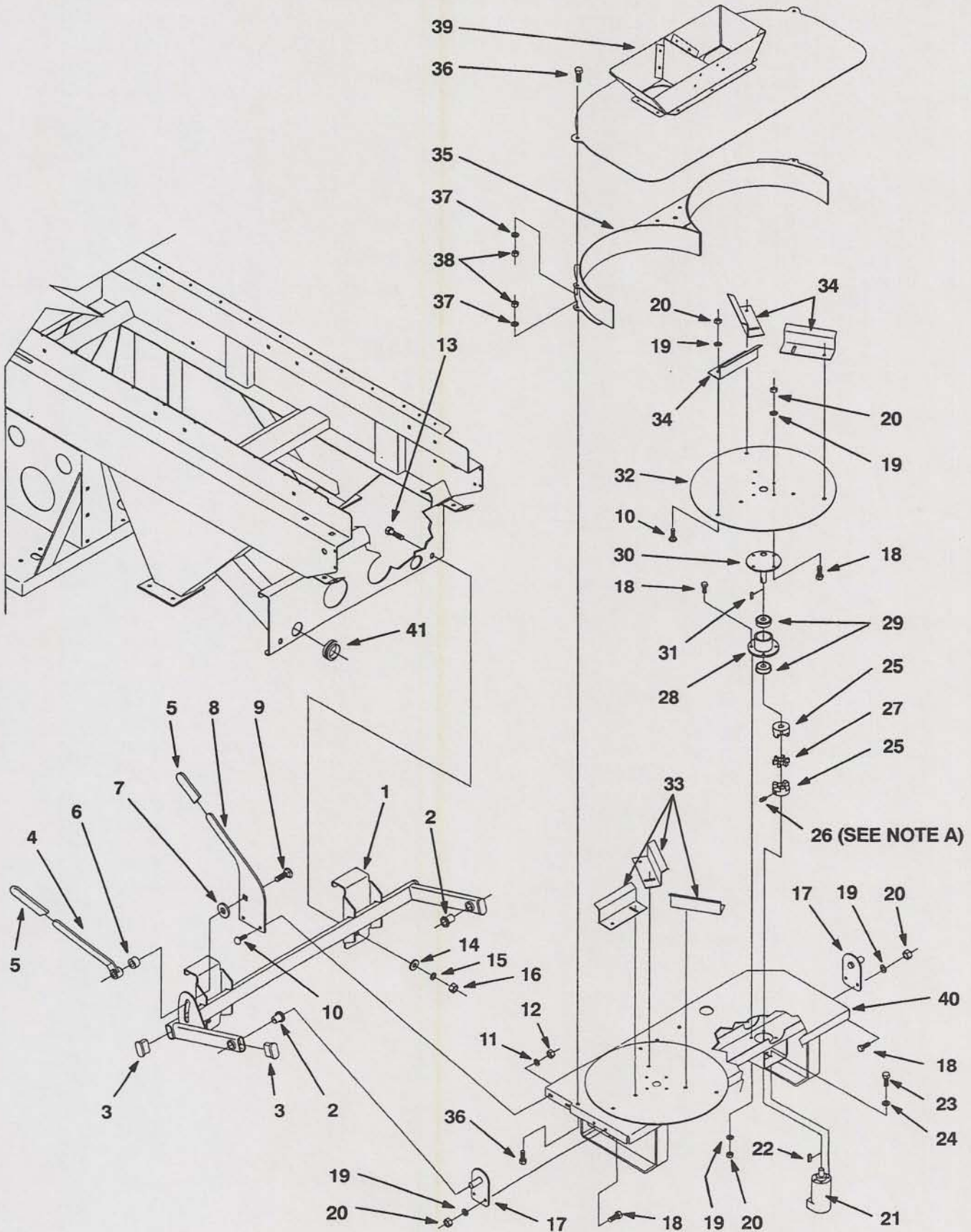


## Engine and Hydraulic Pump Assembly

Item No.	Part No.	Description	Qty.
1	661367	Engine, 9 HP Briggs and Stratton Vanguard, Model 185432 Type 0238 .....	1
2	400268	Screw, Hex Head, 3/8"-16 x 1-3/4" .....	4
3	452006	Washer, Flat, 3/8" ID x 7/8" OD x 5/64" Thick .....	4
4	446142	Washer, Lock, 3/8" .....	10
5	443110	Nut, Hex, 3/8"-16 .....	4
6	661456	Mount, Pump .....	1
7	661457	Guard, Pump Mount .....	2
8	400262	Screw, Hex Head, 3/8"-16 x 1" .....	4
9	499208	Key, Square, 1/4" x 1-1/4" .....	1
10	661375	Coupling, Half, 1" Bore <b>SEE NOTE A</b> .....	1
11	661376	Coupling Half, 5/8" Bore <b>SEE NOTE A</b> .....	1
12	661377	Coupling, Spider .....	1
13	415519	Screw, Set, 5/16"-18 x 3/8" <b>SEE NOTE A</b> .....	2
14	661578	Key, Square, 5/32" x 11/16" .....	1
15	661455	Pump, Gear, Hydraulic .....	1
16	400264	Screw, Hex Head, 3/8"-16 x 1-1/4" .....	2
17	661508	Bumper .....	1
18	658240	Bolt, Carriage, 5/16"-18 x 3/4" .....	6
19	446134	Washer, Lock, 5/16" .....	6
20	443106	Nut, Hex, 5/16" .....	6
21	661440	Fender .....	1
22	657142	Screw, Thread Cutting .....	4
23	661587	Hood, Engine .....	1
24	658467	Insulation, Engine Hood .....	1
25	659138	Pad, Rubber .....	2
26	661563	Hinge, 18" .....	1
27	661562	Latch, Draw, Includes Shoe .....	1
28	661564	Latch, Hook and Catch .....	1
29	499401	Rivet, Blind, 1/4" .....	10
30	499431	Rivet, Blind, 3/16" .....	10
31	499336	Screw, Machine, 10-32 x 3/8" .....	2

**NOTE A:** Torque Set Screws On Coupling Halfs To 78-87 Inch Pounds (8.81-9.83 NM)

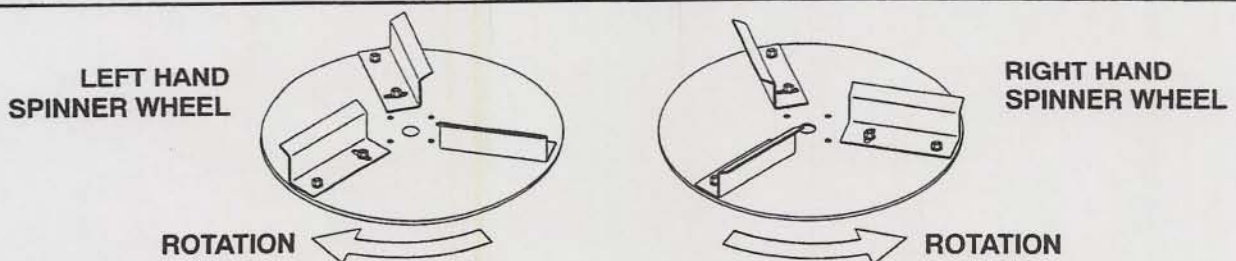
Spinner Assembly



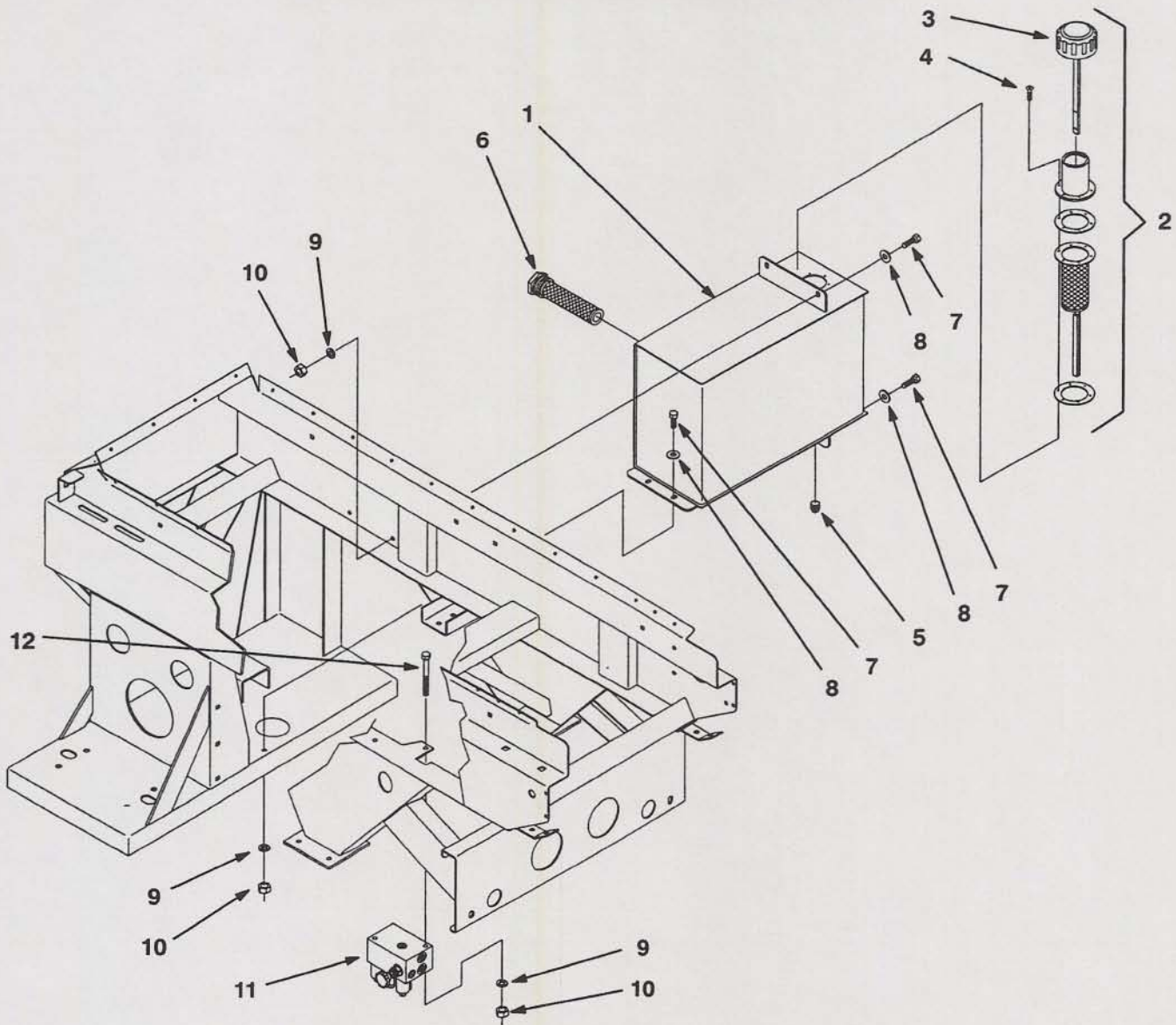
Spinner Assembly

Item No.	Part No.	Description	Qty.
1	661722	Support, Spinner, Includes Plastic Bearings	1
2	661400	Bearing, Flange, Plastic	2
3	661507	Insert, Cap, Rectangular	4
4	659126	Handle, Blade Locking	1
5	657208	Grip, Handle	2
6	661687	Spacer, Handle	1
7	661020	Washer, Special, Metering Gate	1
8	661686	Handle, Spinner Pivot	1
9	661698	Bolt, Carriage, 5/8"-11 x 2-1/2"	1
10	658240	Bolt, Carriage, 5/16"-18 x 3/4"	14
11	452006	Washer, Flat, 3/8" ID x 7/8" OD x 5/64" Thick	2
12	444808	Nut, Hex, 5/16"-18 Flexloc	2
13	400406	Screw, Hex Head, 1/2"-13 x 1-1/4"	2
14	499052	Washer, Flat, 33/64" ID x 7/8" OD x 1/16" Thick	2
15	446154	Washer, Lock, 1/2"	2
16	443118	Nut, Hex, 1/2"-13	2
17	661515	Pivot	2
18	400186	Screw, Hex Head, 5/16"-18 x 7/8"	20
19	446134	Washer, Lock, 5/16"	32
20	443106	Nut, Hex, 5/16"-18	32
21	661460	Motor, Hydraulic, Spinner, SP-1530	2
22	499101	Key, Square, 3/16" x 11/16"	2
23	400146	Screw, Hex Head, 1/4"-28 x 3/4"	10
24	446128	Washer, Lock, 1/4"	10
25	661378	Coupling, Half, 5/8" Bore <b>SEE NOTE A</b>	4
26	415505	Screw, Set, 1/4"-20 x 3/4" <b>SEE NOTE A</b>	8
27	661379	Coupling, Spider	2
28	661513	Coupler, Spinner	2
29	661374	Bearing	4
30	661514	Shaft, Drive	2
31	499496	Key, Square, 3/16" x 3/4"	2
32	661512	Plate, Spinner	2
33	664634	Vane, Spinner, Left Hand	3
34	664633	Vane, Spinner, Right Hand	3
35	661526	Guide, Spinner	1
36	400258	Screw, Hex Head, 3/8"-16 x 3/4"	8
37	446142	Washer, Lock, 3/8"	8
38	443110	Nut, Hex, 3/8"-16	8
39	661444	Hopper Assembly, Small	1
40	661521	Frame, Spinner	1
41	661406	Grommet, Rubber	2

NOTE A: Torque Set Screws On Coupling Halves To 8.8-9.8 NM (78-87 Inch Pounds)

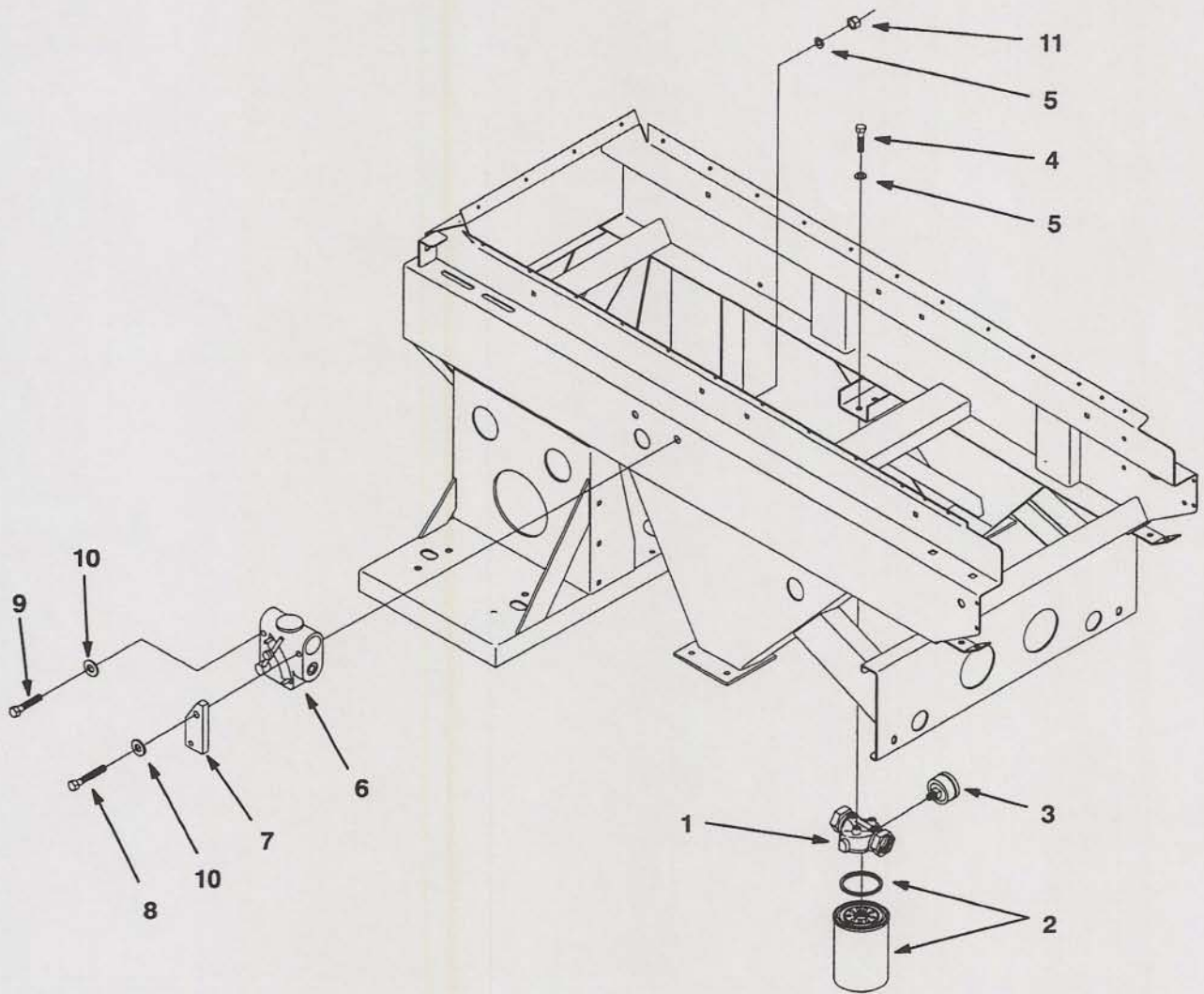


## Hydraulic Reservoir and Manifold Valve Block



Item No.	Part No.	Description	Qty.
1	661369	Reservoir, Hydraulic	1
2	659516	Filler/Strainer Assembly, Includes Screws, Gaskets, and Filler Cap	1
3	660057	Cap, Filler with Dipstick	1
4	657601	Screw, Self-Tapping No. 8 x 1/2"	6
5	472209	Drain Plug, Pipe, 3/4" NPT	2
6	661454	Strainer, Tank Mounted, Outlet	1
7	400262	Screw, Hex Head, 3/8"-16 x 1"	6
8	452006	Washer, Flat, 3/8" ID x 7/8" OD x 5/64" Thick	6
9	446142	Washer, Lock 3/8"	8
10	443110	Nut, Hex, 3/8"-16	8
11	661368	Manifold Valve Block Assembly	1
12	657671	Screw, Hex Head, 3/8"-16 x 4"	2

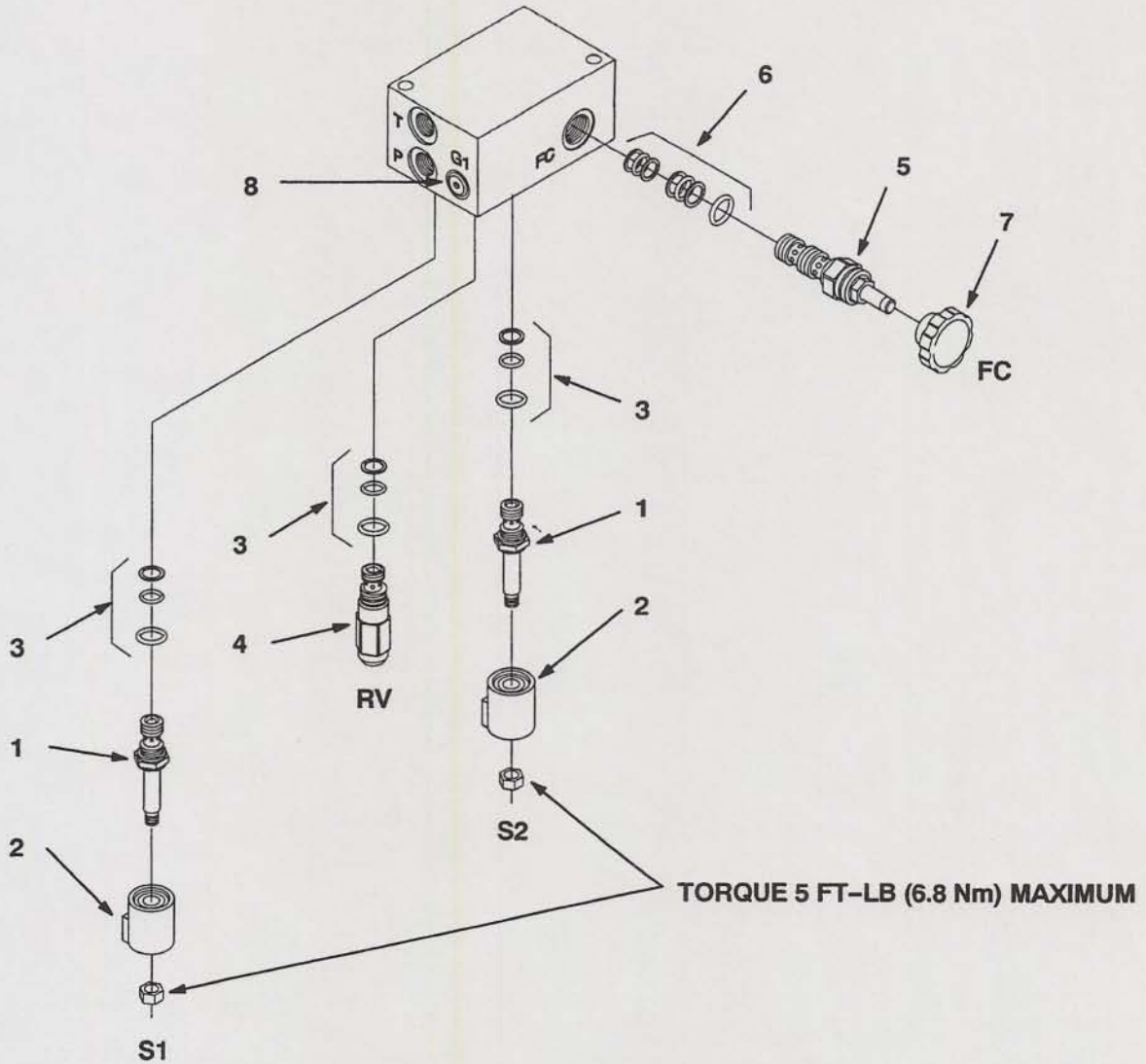
Spinner Speed Control and Hydraulic Filter Assembly



Item No.	Part No.	Description	Qty.
----------	----------	-------------	------

1	661459	Filter Assembly, Hydraulic Fluid, Includes Filter Housing, Filter Cartridge, and Pressure Gauge	1
2	661572	Filter, Replacement Cartridge with Seal	1
3	660857	Gauge, Pressure, Filter	1
4	400106	Screw, Hex Head, 1/4"-20 x 5/8"	2
5	446128	Washer, Lock, 1/4"	2
6	661458	Control, Flow, Spinner Speed	1
7	661584	Stop, Flow Control Lever	1
8	660164	Screw, Hex Head, 1/4"-20 x 3"	1
9	658172	Screw, Hex Head, 1/4"-20 x 2-1/2"	1
10	452002	Washer, Flat, 1/4" ID x 9/16" OD x 3/64" Thick	2
11	443102	Nut, Hex, 1/4"-20	2

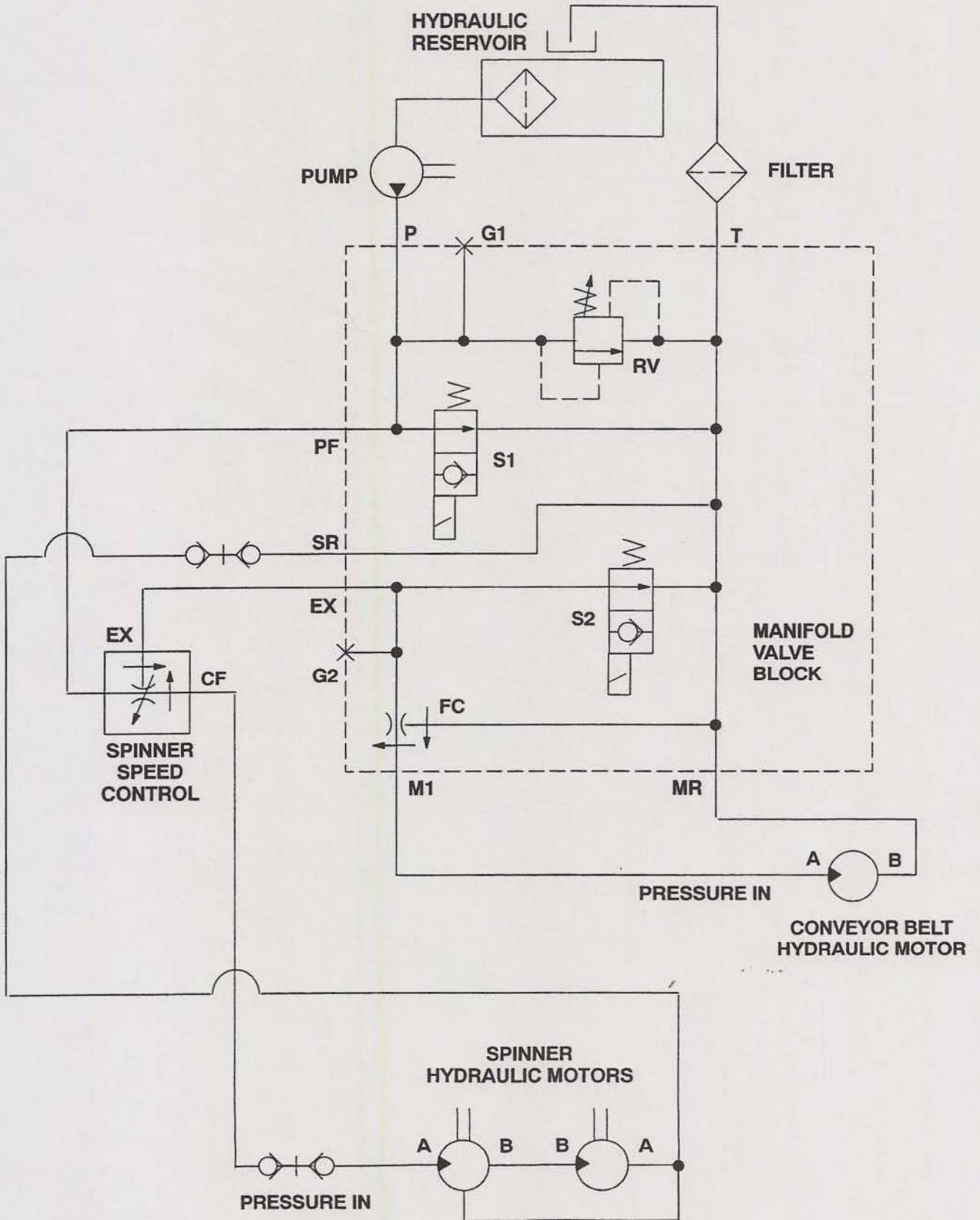
Manifold Valve Block



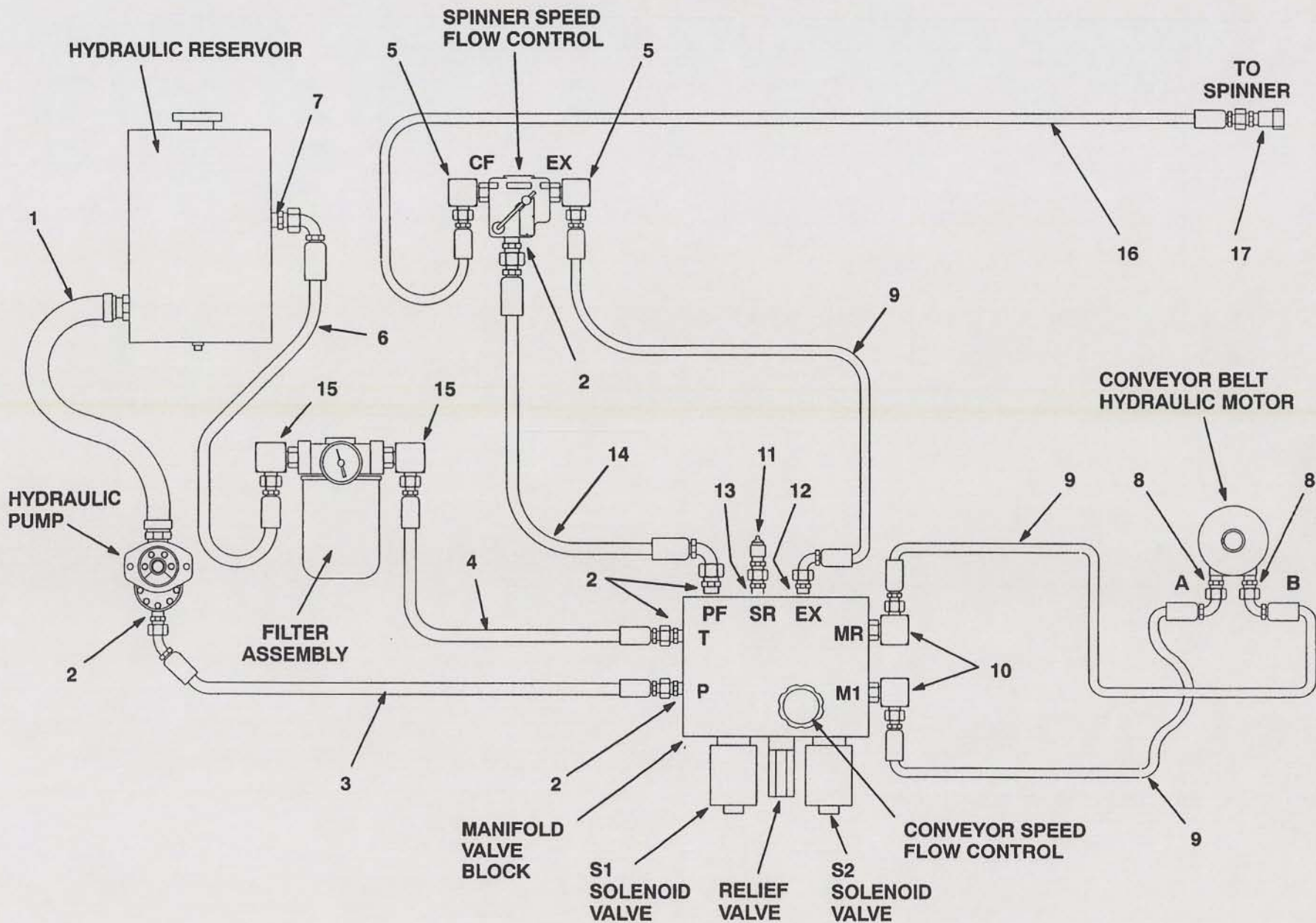
Item No.	Part No.	Description	Qty.
----------	----------	-------------	------

1	661565	Cartridge, Solenoid Valve (S1 and S2) S1 - Spinner "Start and Stop" S2 - Conveyor Belt "Start and Stop" .....	2
2	660606	Coil, Solenoid Valve (S1 and S2) .....	2
3	661566	Seal Kit, Solenoid Valve (S1, S2, and RV) .....	3
4	661567	Cartridge, Relief Valve (RV) .....	1
5	661568	Cartridge, Flow Control Regulator (FC) .....	1
6	661569	Seal Kit, Flow Control Regulator (FC) .....	1
7	661606	Knob, Flow Control Regulator (FC) .....	1
8	661570	Plug, 9/16"-18 SAE (Ports G1 and G2) .....	2

SP-1530 Hydraulic Schematic



# Main Hydraulic System



### Main Hydraulic System

Item No.	Part No.	Description	Qty.
----------	----------	-------------	------

1	661384	Hose Assembly, Suction, Hydraulic Reservoir to Pump .....	1
2	657250	Adapter, 7/8"-14 Male O-Ring / 3/4"-16 Male 37 Degree Flare .....	5
3	661402	Hose Assembly, Pump to Manifold Block .....	1
4	661398	Hose Assembly, Filter Assembly to Manifold Block .....	1
5	661396	Elbow, 7/8"-14 SAE O-Ring / 9/16"-18 Male 37 Degree Flare .....	2
6	661397	Hose Assembly, Hydraulic Filter to Reservoir ...	1
7	657543	Adapter, 3/4"-14 Male NPT / 3/4"-16 Male 37 Degree Flare .....	1
8	661403	Adapter, 7/8"-14 SAE O-Ring / 9/16"-18 37 Degree Flare .....	2

Item No.	Part No.	Description	Qty.
----------	----------	-------------	------

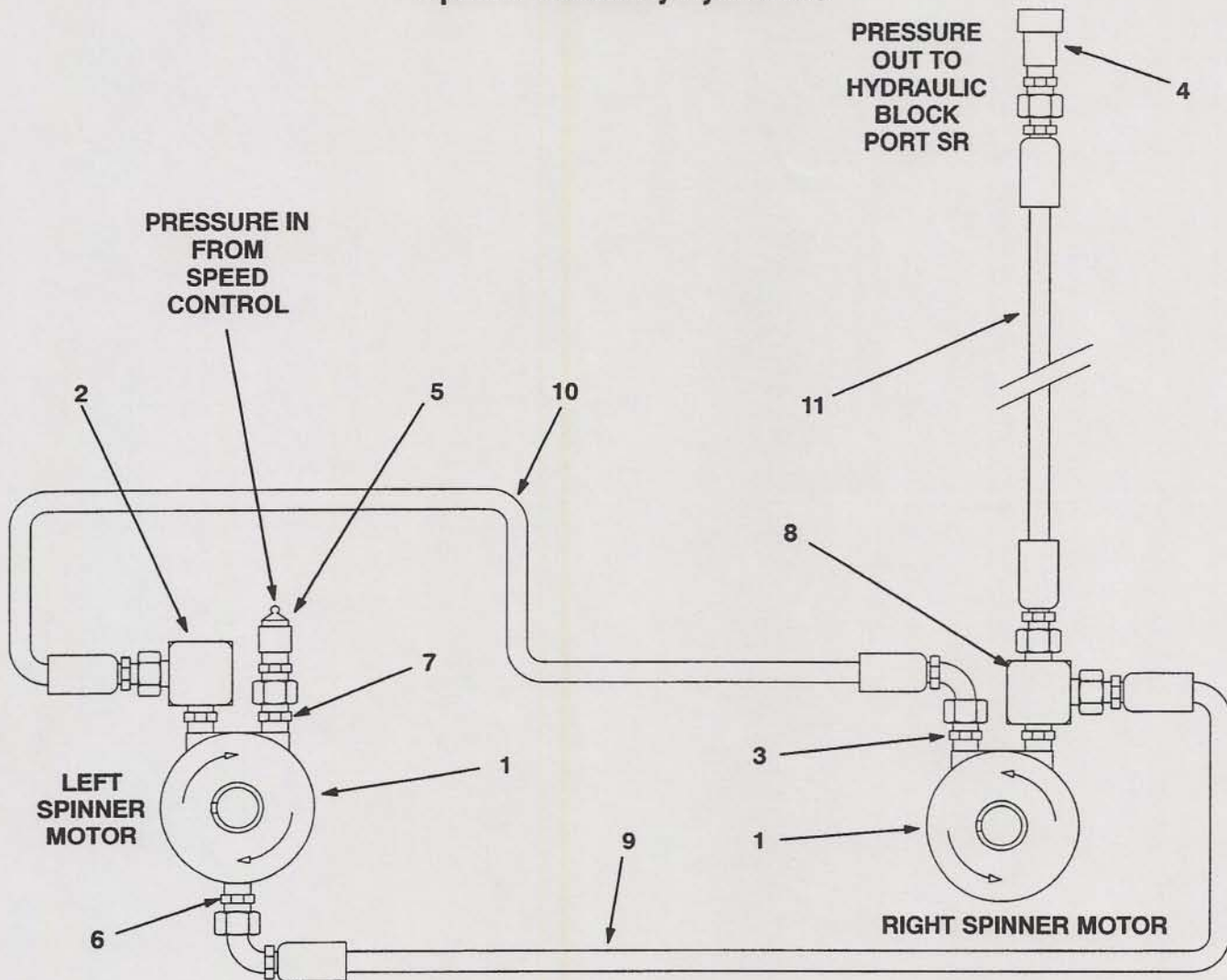
9	661401	Hose Assembly, Flow Control to Manifold Block, Manifold Block to Conveyor Belt Motor, Conveyor Belt Motor to Manifold Block .....	3
10	657538	Elbow, 3/4"-16 Male O-Ring / 9/16"-18 Male 37 Degree Flare .....	2
11	658642	Coupling, Quick Release, Male, 3/8" .....	1
12	657539	Adapter, 3/4"-16 Male O-Ring / 9/16"-18 Male 37 Degree Flare .....	1
13	661395	Adapter, 3/4"-16 SAE O-Ring / 3/8"-18 Male NPT .....	1
14	661399	Hose Assembly, Manifold Block to Flow Control .	1
15	660679	Elbow, 1-1/16"-12 Male O-Ring / 3/4"-16 Male 37 Degree .....	2
16	661404	Hose Assembly, Hydraulic, Flow Control to Spinner Quick Disconnect .....	1
17	658641	Coupling, Quick Disconnect, Female, 3/8" .....	1

SP-1530

49

PARTS LIST

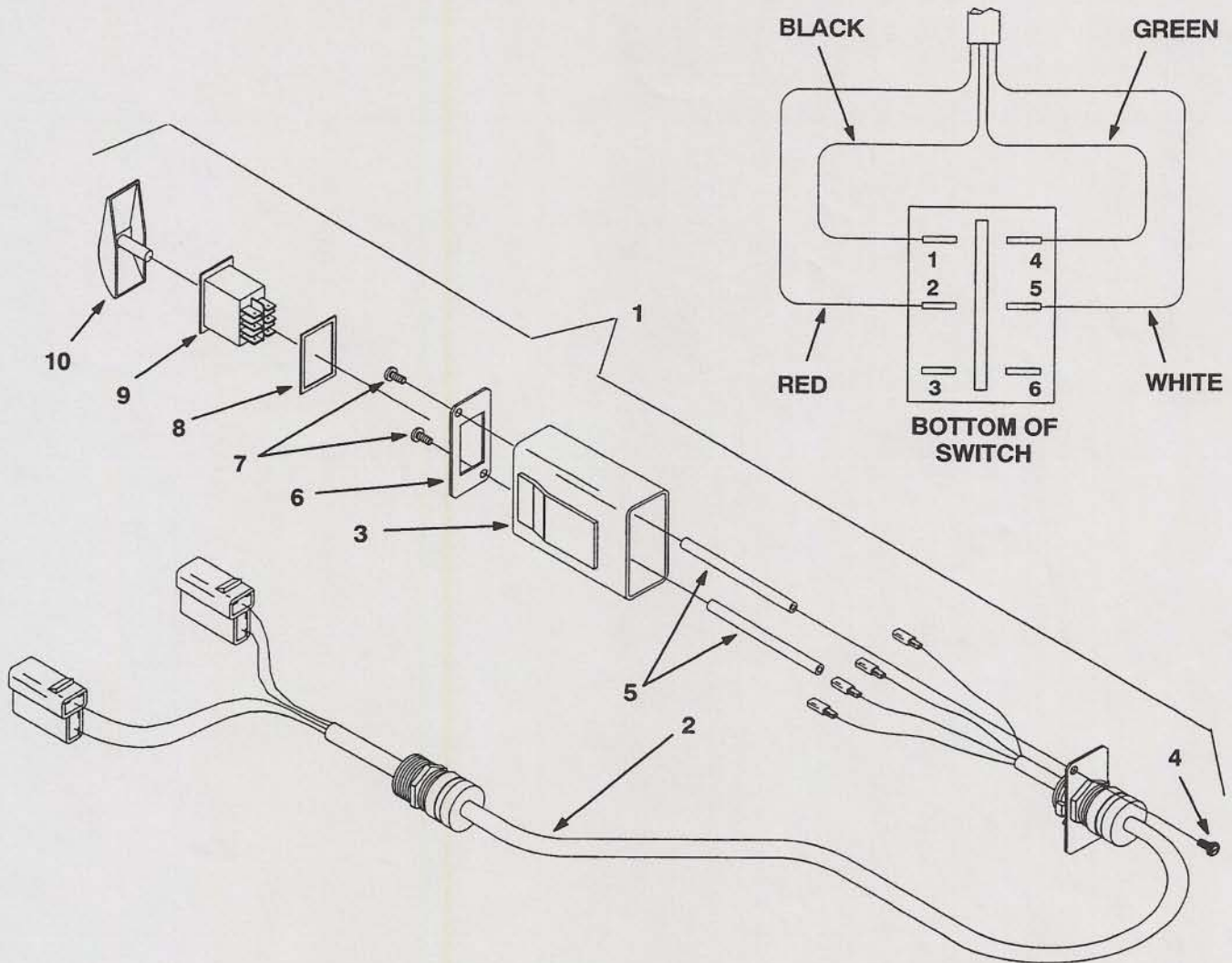
## Spinner Assembly Hydraulics



AS VIEWED FROM TOP

Item No.	Part No.	Description	Qty.
1	661460	Motor, Hydraulic, Spinner, SP-1530 .....	2
2	657536	Elbow, 9/16"-18 Male to 9/16"-18 Male 37 Degree Flare .....	1
3	657660	Adapter, 9/16"-18 Male O-Ring to 9/16"-18 Male 37 Degree Flare ...	1
4	658641	Coupling, Quick Disconnect, Female, 3/8" .....	1
5	658642	Coupling, Quick Disconnect, Male, 3/8" .....	1
6	661389	Adapter, 3/8"-24 SAE O-Ring to 7/16"-20 Male 37 Degree Flare ....	1
7	661390	Adapter, 9/16"-18 SAE O-Ring to 3/8"-18 Male NPT .....	1
8	661391	Tee, 9/16"-18 SAE O-Ring to 9/16"-18 Male 37 Degree Flare .....	1
9	661392	Hose Assembly, Hydraulic Motor Drain .....	1
10	661393	Hose Assembly, Hydraulic Motor to Hydraulic Motor .....	1
11	661394	Hose Assembly, Hydraulic Motor to Quick Disconnect .....	1

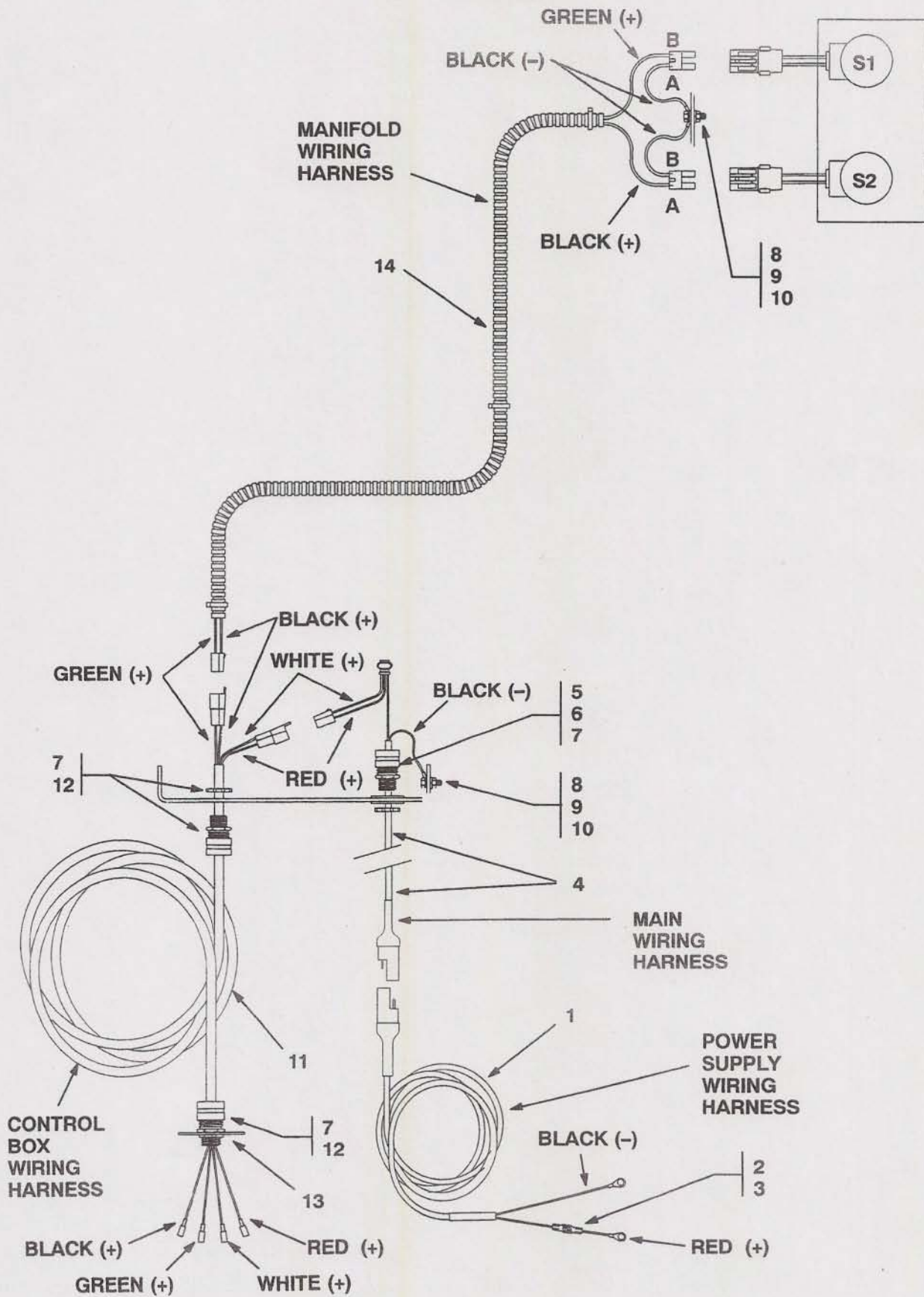
Control Box Assembly



Item No.	Part No.	Description	Qty.
----------	----------	-------------	------

1	661407	Control Box Assembly, Includes Items 2 Thru 10	1
2	661408	Wiring harness, Control Box, SP-1530	1
3	657970	Body, Control Box	1
4	657956	Screw, Machine, 8-32 x 3/8" Phillips Pan Head	2
5	657951	Rod, Tie, Control Box	2
6	657949	Plate, Switch	1
7	657957	Screw, Machine, 8-32 x 3/8" Phillips Flat Head	2
8	658156	Gasket, Rocker Switch	1
9	661493	Switch, Rocker, SPTT	1
10	658155	Actuator, Rocket Switch	1

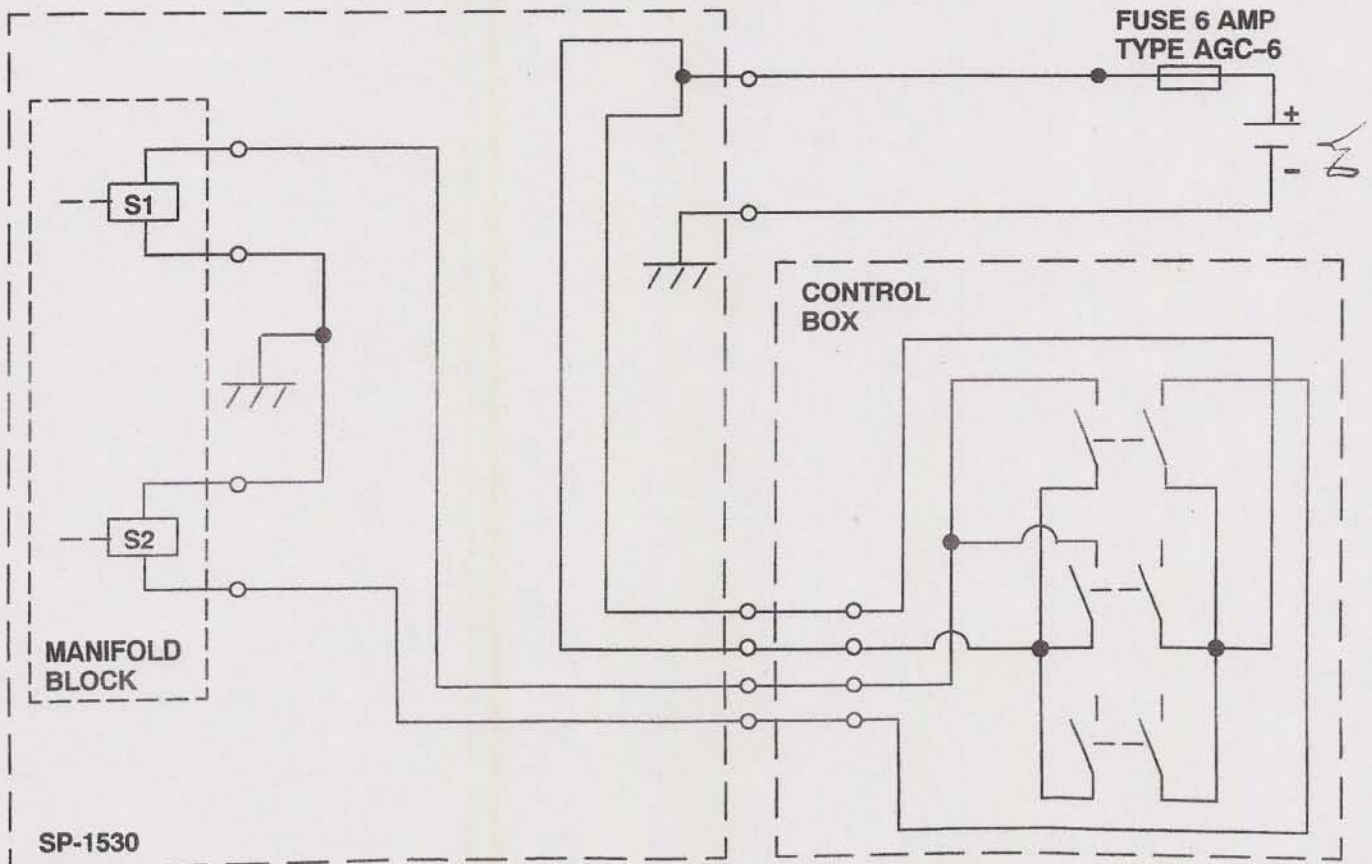
Electrical System



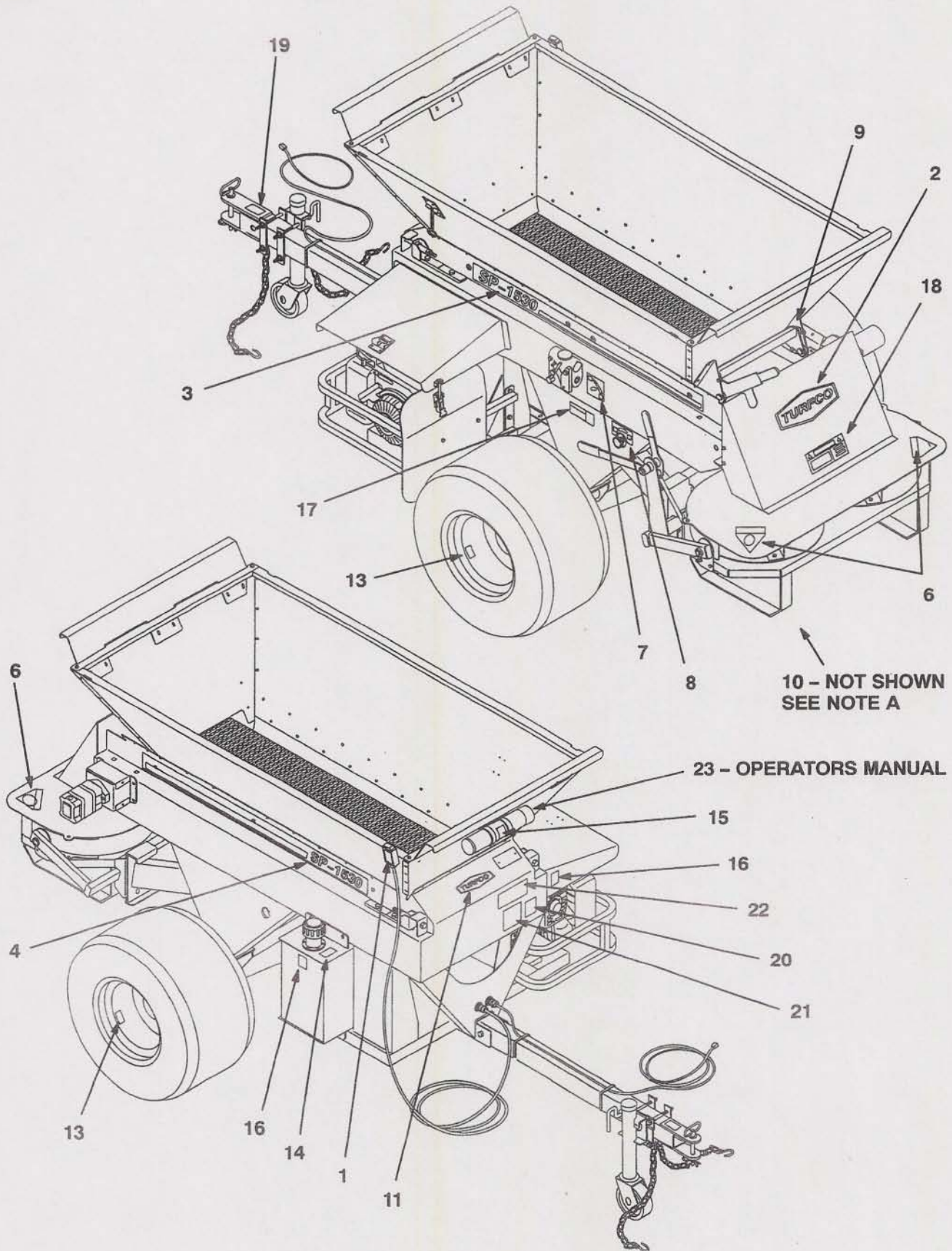
Electrical System

Item No.	Part No.	Description	Qty.
1	661409	Wiring Harness, Power Supply, SP-1530, Includes Fuse Holder and Fuse	1
2	657917	Holder, Fuse	1
3	657972	Fuse, 6 Amp, AGC-6	1
4	661410	Wiring Harness, Main, SP-1530, Includes Cord Connector, Washers, and Locknut	1
5	660869	Connector, Cord	1
6	499428	Washer, Flat, 7/8" ID x 1-1/2" OD x 3/64" Thick	2
7	657603	Locknut, 1/2" NPT	3
8	400106	Screw, Hex Head, 1/4"-20 x 5/8"	2
9	453023	Washer, Flat, 9/32" ID x 5/8" OD x 1/16" Thick	2
10	444830	Nut, Hex, 1/4"-20 Flexloc	2
11	661408	Wiring Harness, Control Box, SP-1530, Includes Base Plate, Cord Connectors, and Locknuts	1
12	657953	Connector, Cord	2
13	657950	Base Plate, Control Box	1
14	661411	Wiring Harness, Manifold	1

SP-1530 ELECTRICAL SCHEMATIC



Decals



## Decals

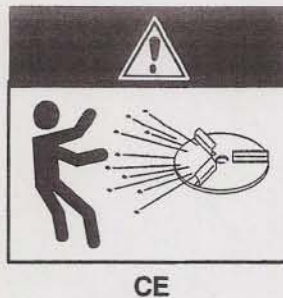
Item No.	Part No.	Description	Qty.
1	661555	Decal, "ON/OFF", Hand Held Control Box .....	1
2	660972	Decal, TURFCO Logo, 12" Wide .....	1
3	661557	Decal, SP-1530 Stripe, Left Hand Side .....	1
4	661558	Decal, SP-1530 Stripe, Right Hand Side .....	1
5	661559	Decal Sheet (Includes Items 6 thru 11) .....	1
6		Decal, "KEEP HANDS AND FEET AWAY" Warning .....	2
7		Decal, Spinner Speed Control .....	1
8		Decal, Conveyor Belt Speed Control .....	1
9		Decal, Metering Gate Position .....	1
10		Decal, Spinner Assembly Hydraulic Hose Routing ... <b>SEE NOTE A</b>	
11		Decal, TURFCO Logo, 7.5" Wide .....	1
12	661560	Decal Sheet (Includes Items 13 thru 22)	
13		Decal, Tire Pressure .....	2
14		Decal, Hydraulic Fluid Type Identification .....	1
15		Decal, Read Manual .....	1
16		Decal, High Heat Warning .....	2
17		Decal, Hydraulic Pressure Hazard Warning .....	1
18		Decal, Spinner "STAY CLEAR" Thrown Objects Danger Warning .....	1
19		Decal, Maximum Tongue Weight Warning .....	1
20		Decal, Maximum Angle of Operation Warning .....	1
21		Decal, Maximum Hopper Capacity and Load Weight Warning ....	1
22		Decal, SP-1530 Specification With Maximum Operating Ground Speed, HP Rating and Empty Weight .....	1
23	661560 Rev A	Manual, Operator's and Parts List, SP-1530, .....	1

**NOTE A:** This Decal Shows The Proper Re-routing Of The Hydraulic Hoses If The Spinner Assembly Has Been Removed. The Decal Is Located On The Rear Of The Frame And Is Only Visible When The Spinner Assembly Is Removed.

Decals



DOMESTIC



CE



DOMESTIC



CE



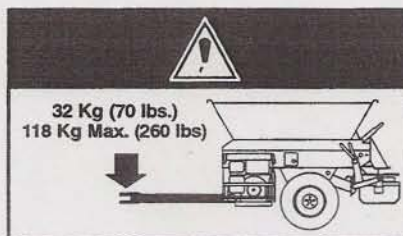
DOMESTIC



CE



DOMESTIC

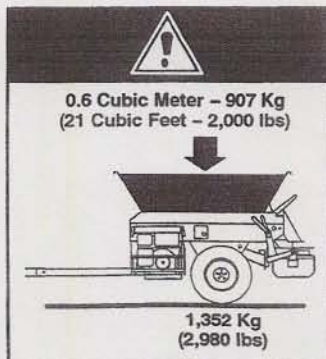


CE



DOMESTIC  
AND CE

E.



DOMESTIC  
AND CE

F.



DOMESTIC  
AND CE

G.

Decals



DOMESTIC AND CE

(H.)



DOMESTIC AND CE

(I.)



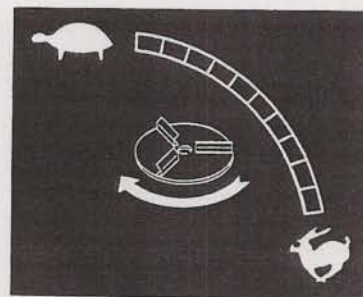
DOMESTIC AND CE

(J.)



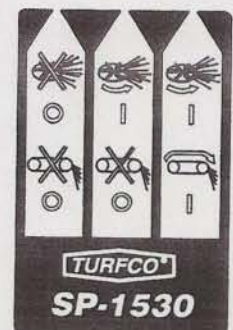
DOMESTIC AND CE

(K.)



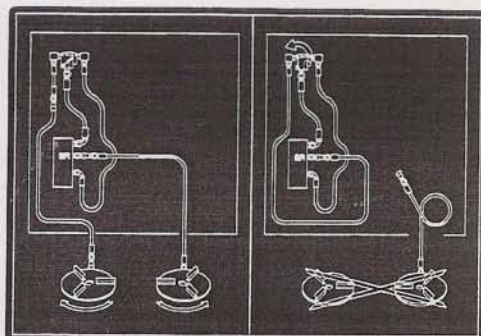
DOMESTIC AND CE

(L.)



DOMESTIC AND CE

(M.)



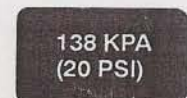
DOMESTIC AND CE

(N.)



DOMESTIC AND CE

(O.)



DOMESTIC AND CE

(P.)

- A. SPINNER "STAY CLEAR" THROWN OBJECT/BYSTANDER WARNING DECAL
- B. SPINNER "KEEP HAND AND FEET AWAY" WARNING DECAL
- C. HYDRAULIC PRESSURE HAZARD WARNING DECAL
- D. MAXIMUM TONGUE WEIGHT WARNING DECAL
- E. MAXIMUM ANGLE OF OPERATION WARNING DECAL
- F. MAXIMUM HOPPER CAPACITY AND MAXIMUM LOAD WEIGHT WARNING DECAL
- G. HIGH HEAT WARNING DECAL (2 PLACES)
- H. READ MANUAL INSTRUCTION DECAL
- I. SP-1530 CE SPECIFICATION DECAL
- J. METERING GATE POSITION DECAL
- K. CONVEYOR BELT SPEED CONTROL DECAL
- L. SPINNER SPEED CONTROL DECAL
- M. HAND HELD CONTROL BOX "ON/OFF" DECAL
- N. SPINNER ASSEMBLY HYDRAULIC HOSE ROUTING DECAL
- O. HYDRAULIC FLUID TYPE IDENTIFICATION DECAL
- P. TIRE PRESSURE DECAL (2 PLACES)